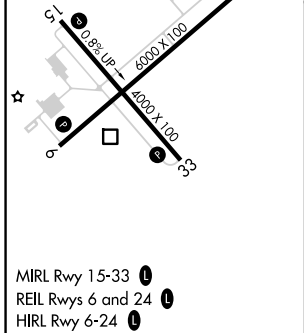
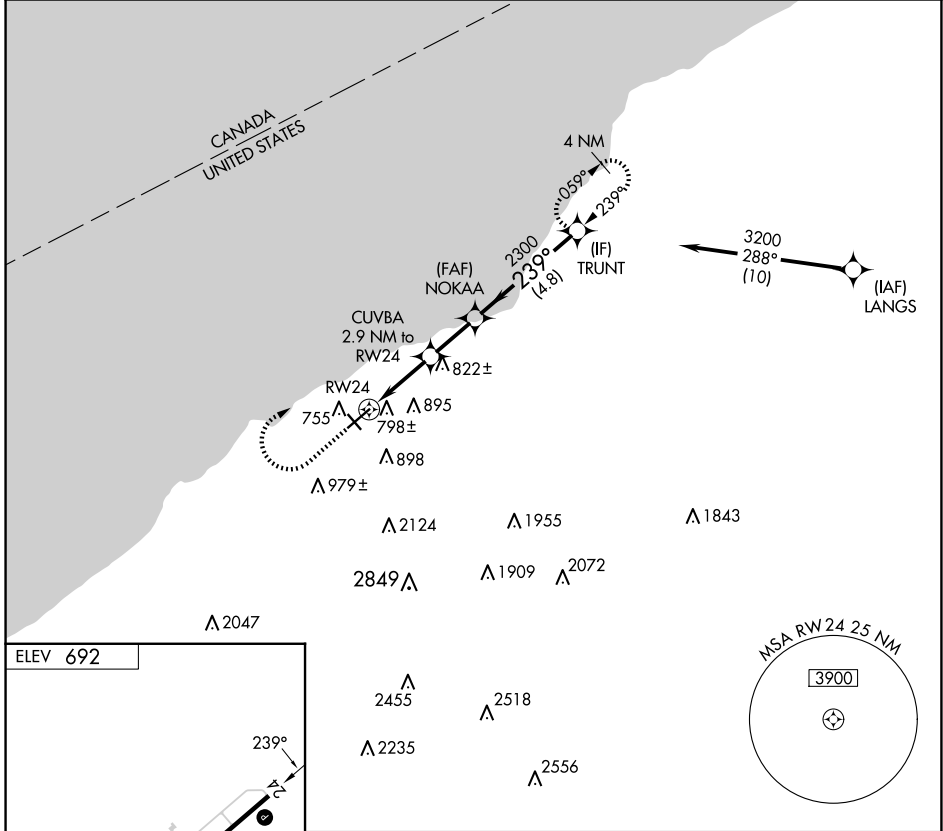


APP CRS 239°	Rwy Idg TDZE Apt Elev	N/A N/A 692
------------------------	-----------------------------	--

RNAV (GPS)-A

CHAUTAUGUA COUNTY/DUNKIRK (DKK)

RNP APCH - GPS.	MISSED APPROACH: Climb to 1900 then climbing right turn to 3200 direct TRUNT and hold.	
Circling Cat D NA southeast of Rwy 6 and southwest of Rwy 33. Circling Rwy 6, 24, 33 NA at night. Rwy 6, 24, 33 helicopter visibility reduction below 1 SM NA.		
ASOS 119.275	BUFFALO APP CON 126.5 317.6	UNICOM 123.075 (CTAF) 0



1900	3200	TRUNT	Visual Segment - Obstacles.	
CATEGORY	A	B	C	D
C CIRCLING	1200-1 508 (600-1)	1320-1 628 (700-1)	1640-2¾ 948 (1000-2¾)	2140-3 1448 (1500-3)

NE-2, 17 APR 2025 to 15 MAY 2025

NE-2, 17 APR 2025 to 15 MAY 2025