

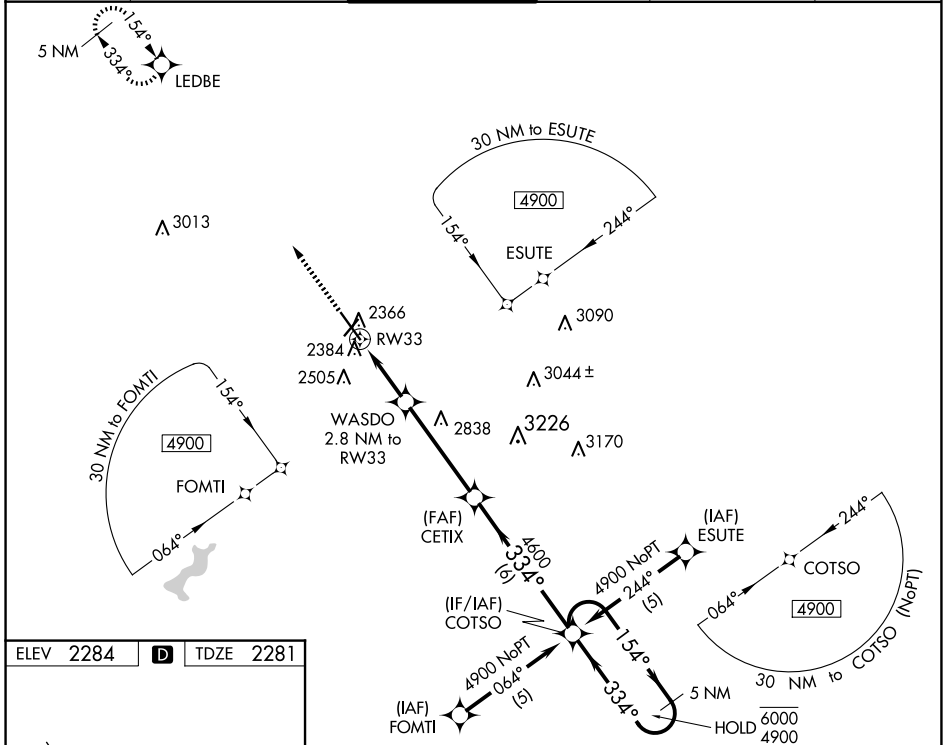
WAAS CH <b>61113</b> <b>W33A</b>	APP CRS <b>334°</b>	Rwy Idg TDZE Apt Elev	<b>6484</b> <b>2281</b> <b>2284</b>
--	------------------------	-----------------------------	---

# RNAV (GPS) RWY 33

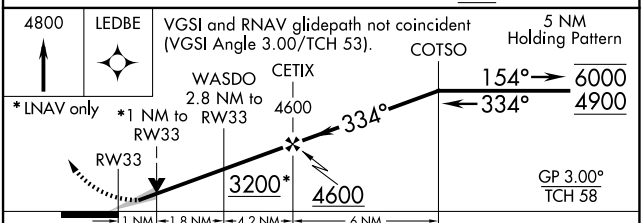
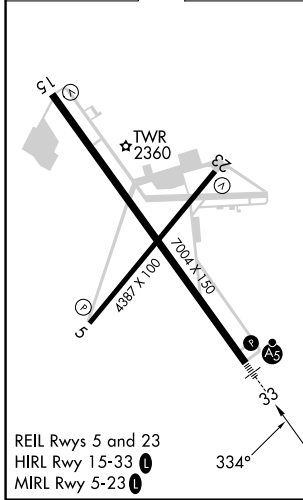
JOHN MURTHA JOHNSTOWN/CAMBRIA COUNTY (JST)

RNP APCH.	MALSR	MISSED APPROACH: Climb to 4800 direct LEDBE and hold.
<p><b>▼</b> Inop table does not apply to LNAV Cat D. For uncompensated Baro-VNAV systems, LNAV/VNAV NA below -19°C or above 54°C. For inop ALS increase LNAV/VNAV all Cats visibility to ½ SM and LNAV Cat C visibility to 1 SM.</p>		

ATIS <b>118.325</b>	JOHNSTOWN APP CON ★ <b>121.2 299.2</b>	JOHNSTOWN TOWER ★ <b>125.75 (CTAF) 0</b>	GND CON <b>121.6</b>	CLNC DEL <b>126.85 235.775</b>	UNICOM <b>122.95</b>
------------------------	---	---	-------------------------	-----------------------------------	-------------------------



ELEV 2284	<b>D</b>	TDZE 2281
-----------	----------	-----------



CATEGORY	A		B		C		D
LPV DA	2481-½		200 (200-½)				
LNAV/VNAV DA	2552-½		271 (300-½)		2552-¾		271 (300-¾)
LNAV MDA	2640-½		359 (400-½)		2640-5/8		2640-1
<b>C</b> CIRCLING	2700-1		2880-1		2880-1½		3000-2¼
	416 (500-1)		596 (600-1)		596 (600-½)		716 (800-2¼)

NE-4, 17 APR 2025 to 15 MAY 2025

NE-4, 17 APR 2025 to 15 MAY 2025