

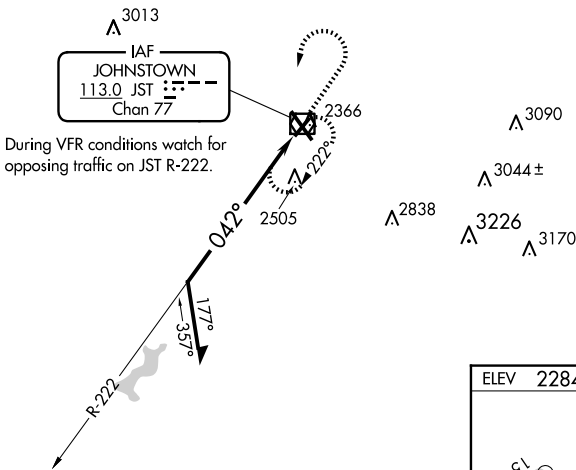
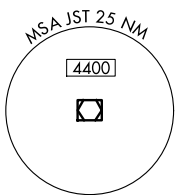
VOR/DME JST <b>113.0</b> Chan 77	APP CRS <b>042°</b>	Rwy Idg TDZE Apt Elev <b>4387</b> <b>2284</b> <b>2284</b>
--	------------------------	--

# VOR RWY 5

JOHN MURTHA JOHNSTOWN/CAMBRIA COUNTY (JST)

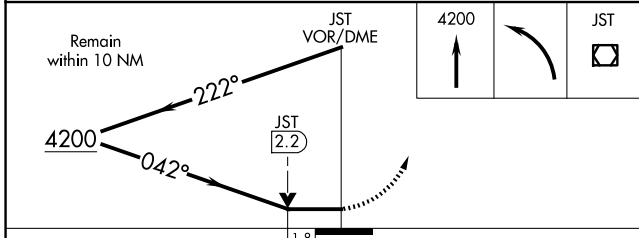
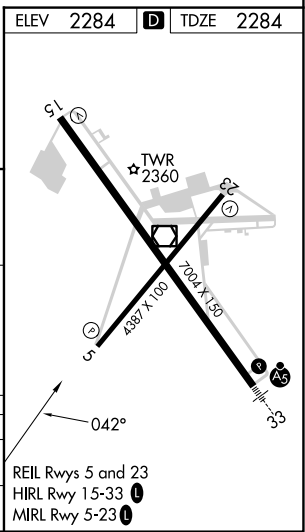
<b>▼</b> <b>▲</b> Rwy 5 helicopter visibility reduction below 3/4 SM NA.	MISSED APPROACH: Climb to 4200 then left turn direct JST VOR/DME and hold.
---	--

ATIS <b>118.325</b>	JOHNSTOWN APP CON ★ <b>121.2 299.2</b>	JOHNSTOWN TOWER ★ <b>125.75 (CTAF) 0</b>	GND CON <b>121.6</b>	CLNC DEL <b>126.85 235.775</b>	UNICOM <b>122.95</b>
------------------------	---	---	-------------------------	-----------------------------------	-------------------------



During VFR conditions watch for opposing traffic on JST R-222.

IAF  
JOHNSTOWN  
113.0 JST  
Chan 77



CATEGORY	A	B	C	D
S-5	2880-1 596 (600-1)		2880-1 3/4 596 (600-1 3/4)	
<b>C</b> CIRCLING	2880-1 596 (600-1)		2880-1 3/4 596 (600-1 3/4)	3000-2 1/4 716 (800-2 1/4)

NE-4, 17 APR 2025 to 15 MAY 2025

NE-4, 17 APR 2025 to 15 MAY 2025