

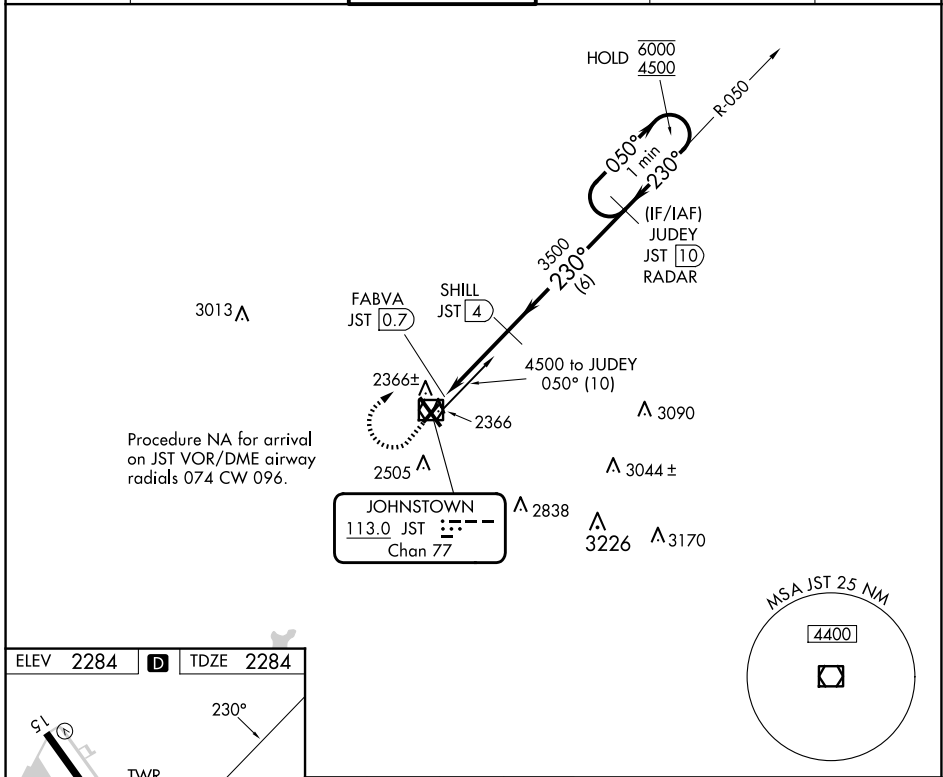
VOR/DME JST	APP CRS	Rwy Idg	<b>4387</b>
<b>113.0</b>	<b>230°</b>	TDZE	<b>2284</b>
Chan <b>77</b>		Apt Elev	<b>2284</b>

# VOR Z RWY 23

JOHN MURTHA JOHNSTOWN/CAMBRIA COUNTY (JST)

DME required.		MISSED APPROACH: Climb to 3000 then climbing right turn to 4500 on heading 075° and JST VOR/DME R-050 to JUDEY/JST 10 DME/RADAR and hold.	
Rwy 23 helicopter visibility reduction below 3/4 SM NA.			

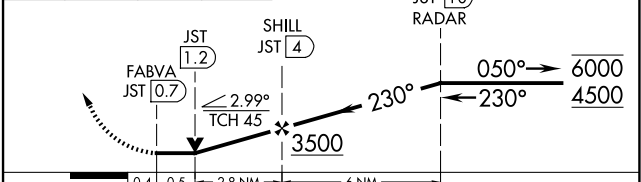
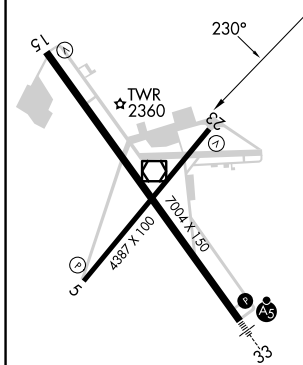
ATIS <b>118.325</b>	JOHNSTOWN APP CON ★ <b>121.2 299.2</b>	JOHNSTOWN TOWER ★ <b>125.75</b> (CTAF)	GND CON <b>121.6</b>	CLNC DEL <b>126.85 235.775</b>	UNICOM <b>122.95</b>
------------------------	---	---	-------------------------	-----------------------------------	-------------------------



NE-4, 17 APR 2025 to 15 MAY 2025

NE-4, 17 APR 2025 to 15 MAY 2025

ELEV	<b>2284</b>	<b>D</b>	TDZE	<b>2284</b>
------	-------------	----------	------	-------------



CATEGORY	A	B	C	D
S-23	2620-1 336 (400-1)			
CIRCLING	2700-1 416 (500-1)	2880-1 596 (600-1)	2880-1½ 596 (600-1½)	3000-2¼ 716 (800-2¼)

REIL Rws 5 and 23  
HIRL Rwy 15-33   
MIRL Rwy 5-23

# VOR Z RWY 23