


WAAS CH 40420 W18A	APP CRS 178°	Rwy Idg 5998
		TDZE 206
		Apt Elev 206

RNAV (GPS) RWY 18

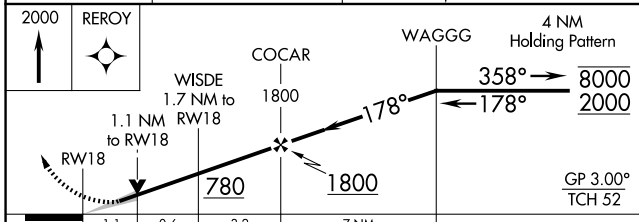
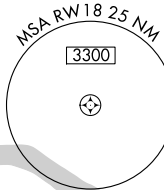
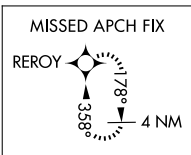
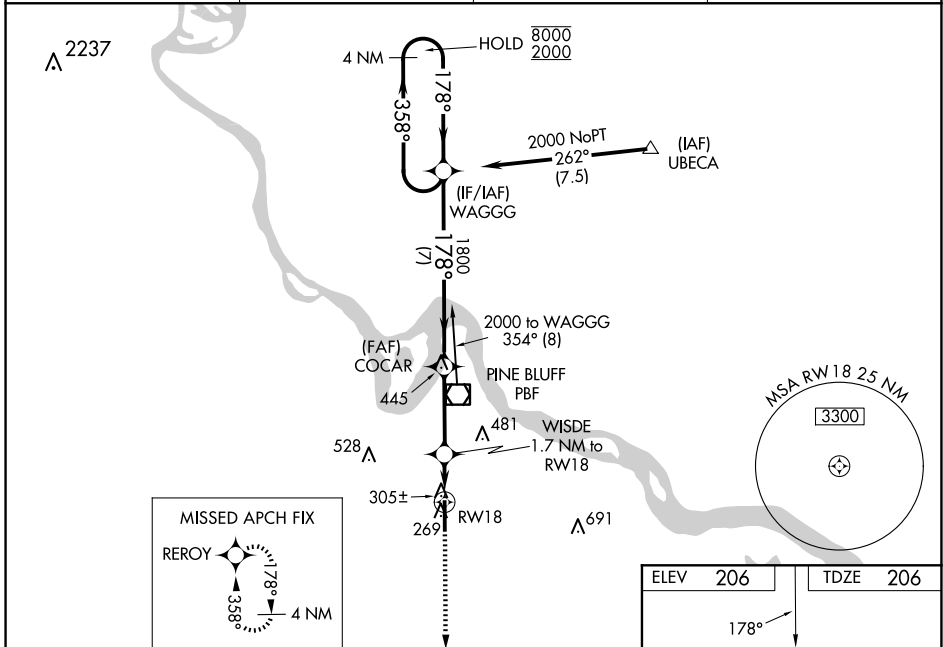
PINEBLUFF RGNL/GRIDER FLD (PBF)

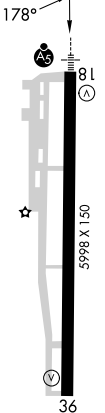
RNP APCH - GPS.

⚠ Baro-VNAV and VDP NA when using Stuttgart altimeter setting. For uncompensated Baro-VNAV systems, LNAV/VNAV NA below -10°C or above 54°C. When local altimeter setting not received, use Stuttgart altimeter setting and increase LPV DA to 534 feet; increase LNAV/VNAV DA to 723 feet and all visibilities ½ SM. Increase all MDAs 80 feet and LNAV visibility Cat C/D ¾ SM, and Circling visibility Cat C/D ¼ SM. For inop ALS, increase LNAV Cats A/B visibility to 1 SM and Cats C/D visibility to 1½ SM. For inop ALS when using Stuttgart altimeter setting, increase LPV all Cats visibility to 1 SM; increase LNAV/VNAV all Cats visibility to 1½ SM; increase LNAV Cats C/D visibility 1½ SM.

MALSR

MISSED APPROACH:
 Climb to 2000 direct REROY and hold.

ASOS 120.775	LITTLE ROCK APP CON 119.85 353.6	CINC DEL 119.85	UNICOM 123.0 (CTAF) 0
------------------------	--	---------------------------	---------------------------------



ELEV 206	TDZE 206
	
MIRL Rwy 18-36 0	

CATEGORY	A	B	C	D
LPV DA		459-¾	253 (300-¾)	
LNAV/VNAV DA		648-1	442 (500-1)	
LNAV MDA		600-¾	394 (400-¾)	
CIRCLING	660-1 454 (500-1)	680-1 474 (500-1)	840-1¾ 634 (700-1¾)	880-2¼ 674 (700-2¼)

SC-1, 17 APR 2025 to 15 MAY 2025

SC-1, 17 APR 2025 to 15 MAY 2025