

WAAS CH <b>99628</b> <b>W01A</b>	APP CRS <b>012°</b>	Rwy ldg TDZE Apt Elev	<b>4506</b> <b>3150</b> <b>3150</b>
--	------------------------	-----------------------------	---

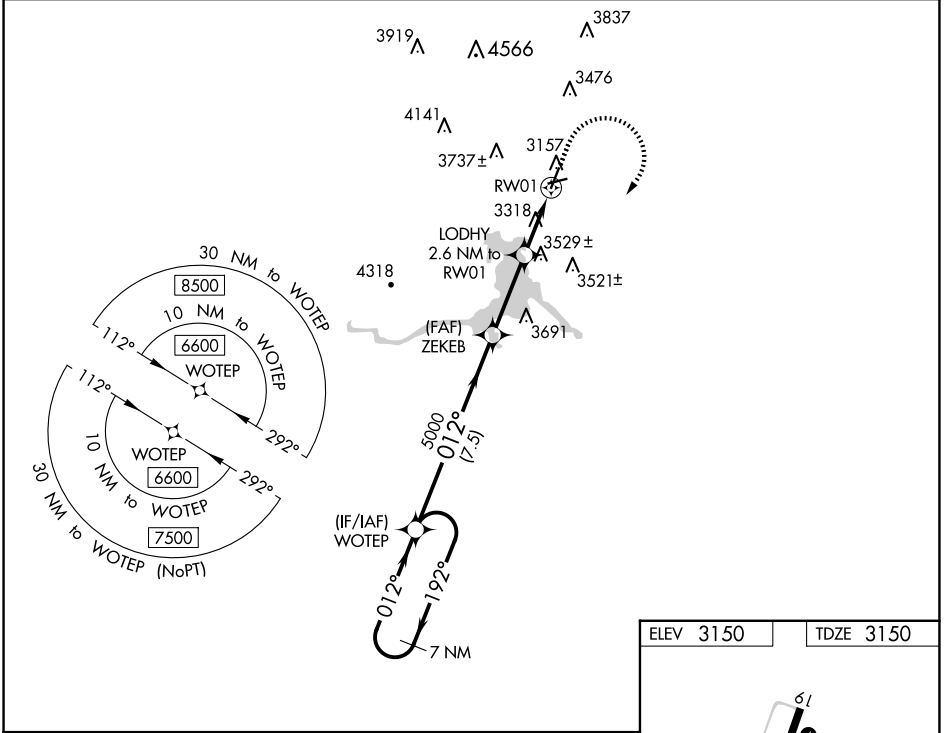
# RNAV (GPS) RWY 1

HOT SPRINGS MUNI (HSR)

**▽** Rwy 1 helicopter visibility reduction below 3/4 NA. DME/DME RNP-0.3 NA.  
**▲ NA** Circling NA west of Rwy 1-19. Use Chadron, NE altimeter setting, when not received use Rapid City Rgnl altimeter setting and increase all MDA 20 feet, increase LNAV Cat B visibility 1/4 mile. Circling NA to Rwy 6 and 24.

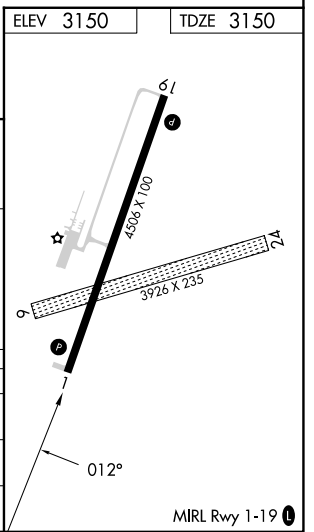
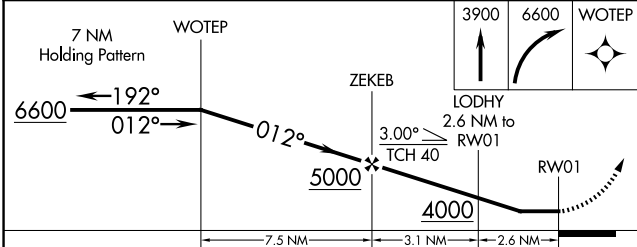
MISSED APPROACH: Climb to 3900, then climbing right turn to 6600 direct WOTEP and hold.

CDR ASOS <b>118.05</b>	DENVER CENTER <b>127.95 338.2</b>	GCO <b>121.725</b>	AUNICOM <b>122.8 (CTAF) 0</b>
---------------------------	--------------------------------------	-----------------------	----------------------------------



NC-1, 17 APR 2025 to 15 MAY 2025

NC-1, 17 APR 2025 to 15 MAY 2025



CATEGORY	A	B	C	D
LP MDA	3840-1	690 (700-1)	3840-2	690 (700-2)
LNAV MDA	3880-1	730 (800-1)	3880-2	730 (800-2)
<b>C</b> CIRCLING	3880-1 730 (800-1)	3900-1 750 (800-1)	3980-2 1/2 830 (900-2 1/2)	4100-3 950 (1000-3)