

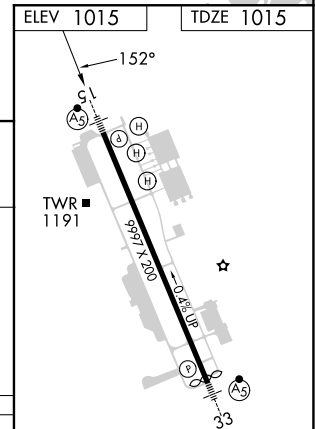
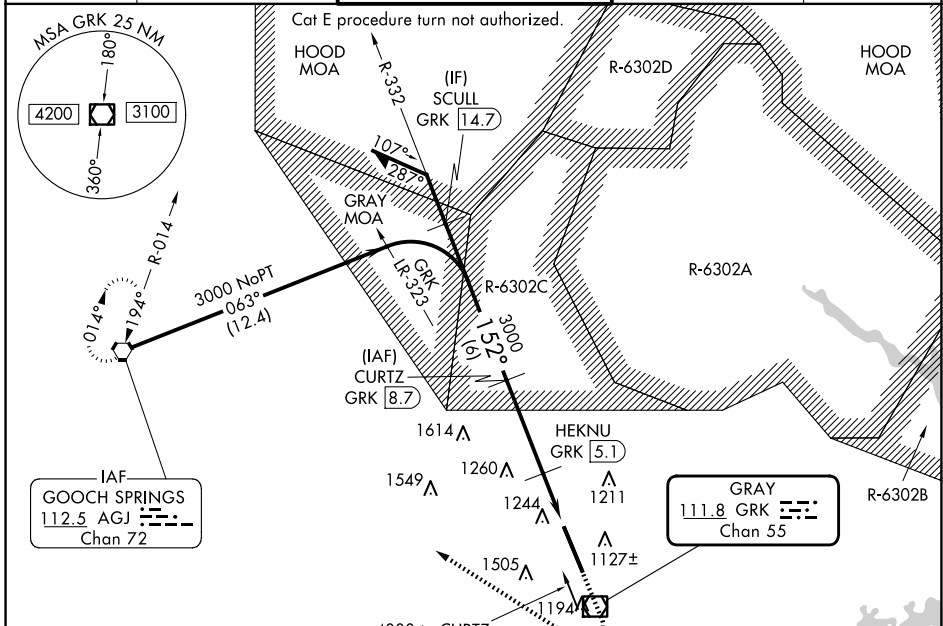
VOR/DME GRK	APP CRS	Rwy Idg	<b>9997</b>
<b>111.8</b>	<b>152°</b>	TDZE	<b>1015</b>
Chan <b>55</b>		Apt Elev	<b>1015</b>

# VOR RWY 15

ROBERT GRAY AAF (GRK)

DME required.		MALSR	MISSED APPROACH: Climb to 2000 then climbing right turn to 3000 direct AGJ VORTAC and hold.
NA ASR/PAR Circling NA west of Rws 15 and 33. For inop ALS, increase S-15 Cat E visibility to 1% SM.		MALSR	

ATIS <b>124.9</b>	GRAY APP CON <b>120.075 323.15</b>	GRAY TOWER <b>120.75(CTAF) 285.5</b>	GND CON <b>121.8 279.5</b>	CLNC DEL <b>126.2 251.1</b>
----------------------	---------------------------------------	---	-------------------------------	--------------------------------



VGSIs and descent angles not coincident (VGS angle 3.00/TCH 53).				
2000		3000		AGJ
↑		↘		◻

CATEGORY	A	B	C	D	E
S-15	1560/24	545 (600-1/2)	1560/60	545 (600-1 1/4)	
CIRCLING	1560-1	545 (600-1)	1560-1 5/8 545 (600-1 5/8)	1620-2 605 (700-2)	1740-2 1/2 725 (800-2 1/2)

HIRL Rwy 15-33	FAF to MAP 5.7 NM				
Knots	60	90	120	150	180
Min:Sec	5:42	3:48	2:51	2:17	1:54

SC-3, 17 APR 2025 to 15 MAY 2025

SC-3, 17 APR 2025 to 15 MAY 2025