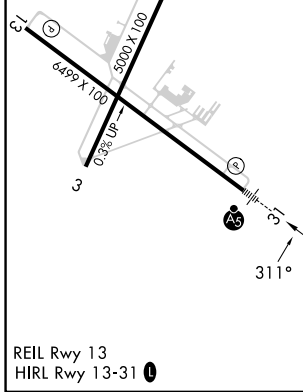
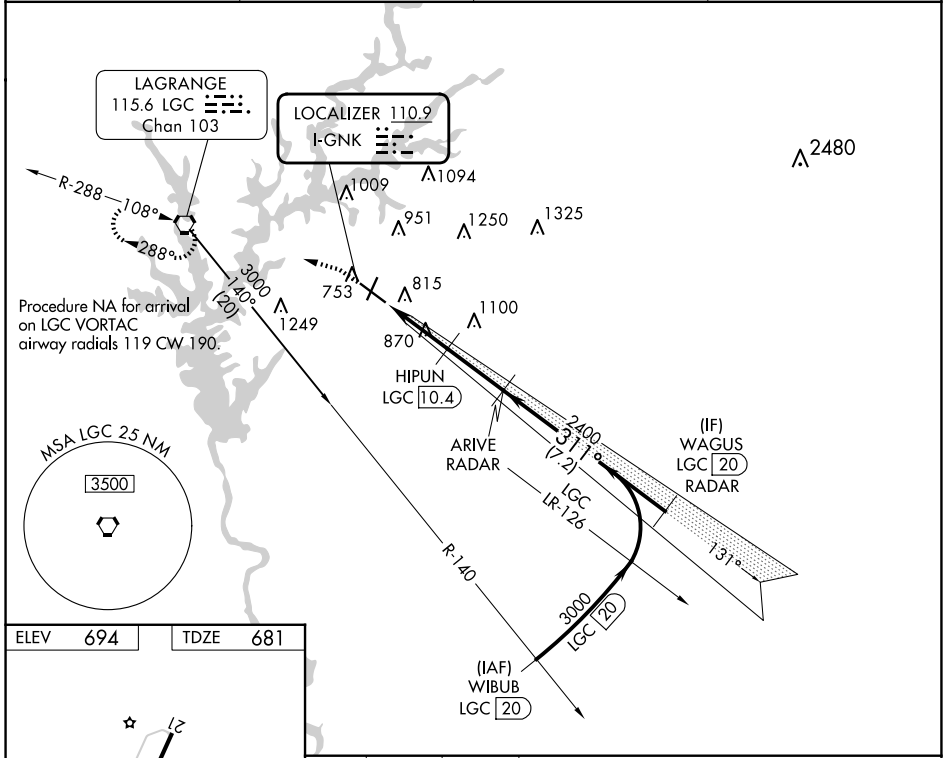


LOC I-GNK 110.9	APP CRS 311°	Rwy ldg TDZE Apt Elev 6499 681 694
---------------------------	------------------------	------------------------------------------------------------------------

ILS or LOC RWY 31

LAGRANGE/CALLAWAY (LGC)

DME required for procedure entry. RADAR and DME required for LOC only.		MALSR 	MISSED APPROACH: Climb to 1200 then climbing left turn to 2400 direct LGC VORTAC and hold.
Circling Rwy 13, 21 NA at night. DME from LGC VORTAC. Simultaneous reception of I-GNK and LGC DME required.			
AWOS-3 126.325	ATLANTA APP CON* 125.5 323.1	CINC DEL 119.25	UNICOM 122.975 (CTAF)



1200	2400	LGC	WAGUS LGC 20 RADAR	
*LOC only.		HIPUN LGC 10.4	ARIVE RADAR	
		2400	3000	
		1600*	2400	
		1.3	1.5	
		2.5 NM	7.2 NM	
CATEGORY	A	B	C	D
S-ILS 31	881-1/2		200 (200-1/2)	
S-LOC 31	1120-1/2 439 (500-1/2)		1120-3/4 439 (500-3/4)	
CIRCLING	1280-1 586 (600-1)		1540-2 1/2 906 (1000-3)	

GS 3.00° TCH 41

SE-4, 17 APR 2025 to 15 MAY 2025

SE-4, 17 APR 2025 to 15 MAY 2025