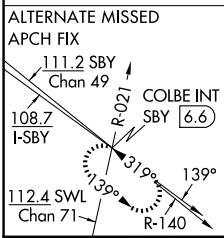
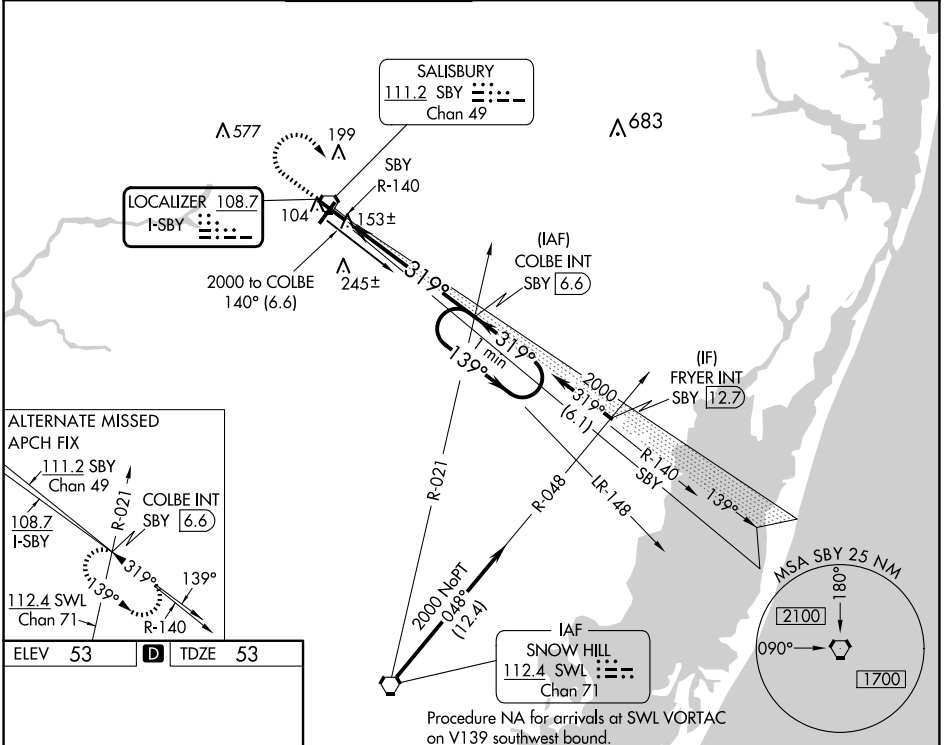


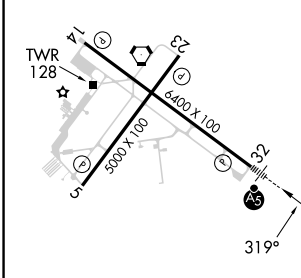
LOC I-SBY 108.7	APP CRS 319°	Rwy Idg TDZE Apt Elev	6400 53 53
---------------------------	------------------------	-----------------------------	---------------------------------------

ILS or LOC RWY 32
SALISBURY-OCEAN CITY WICOMICO RGNL (SBY)

<p>▼ When local altimeter setting not received, use Georgetown altimeter setting: increase DA to 305 feet; increase all MDA 60 feet and S-LOC 32 Cat C and Circling Cat D visibility ¼ SM.</p>	<p>MALSR AS</p>	<p>MISSED APPROACH: Climb to 700 then climbing right turn to 2000 on heading 170° and on SBY VORTAC R-140 to COLBE INT/SBY VORTAC 6.6 DME and hold.</p>				
ASOS 118.325	PATUXENT APP CON★ 127.95 314.0	SALISBURY TOWER★ 119.425 (CTAF) 0	GND CON 123.775	CLNC DEL 123.775	CLNC DEL 132.45 (when twr closed)	UNICOM 122.95



ELEV 53	D	TDZE 53
---------	----------	---------



REIL Rwy 5, 14 and 23 **0**
MIRL Rwy 5-23 **0**
HIRL Rwy 14-32 **0**

FAF to MAP 5.9 NM

Knots	60	90	120	150	180
Min:Sec	5:54	3:56	2:57	2:22	1:58

700	2000	SBY R-140	COLBE INT	COLBE INT SBY (6.6)	One Minute Holding Pattern
hdg 170°					
*LOC only					
SBY (0.8)	*SBY (1.8)	2000	2000	139°	2000
				← 319°	GS 3.00° TCH 54
1 NM		4.9 NM			
CATEGORY	A	B	C	D	
S-ILS 32	253-½ 200 (200-½)				
S-LOC 32	420-½ 367 (400-½)			420-¾ 367 (400-¾)	
CIRCLING	480-1 427 (500-1)	520-1 467 (500-1)	560-1½ 507 (600-1½)	700-2 647 (700-2)	

NE-3, 17 APR 2025 to 15 MAY 2025

NE-3, 17 APR 2025 to 15 MAY 2025