

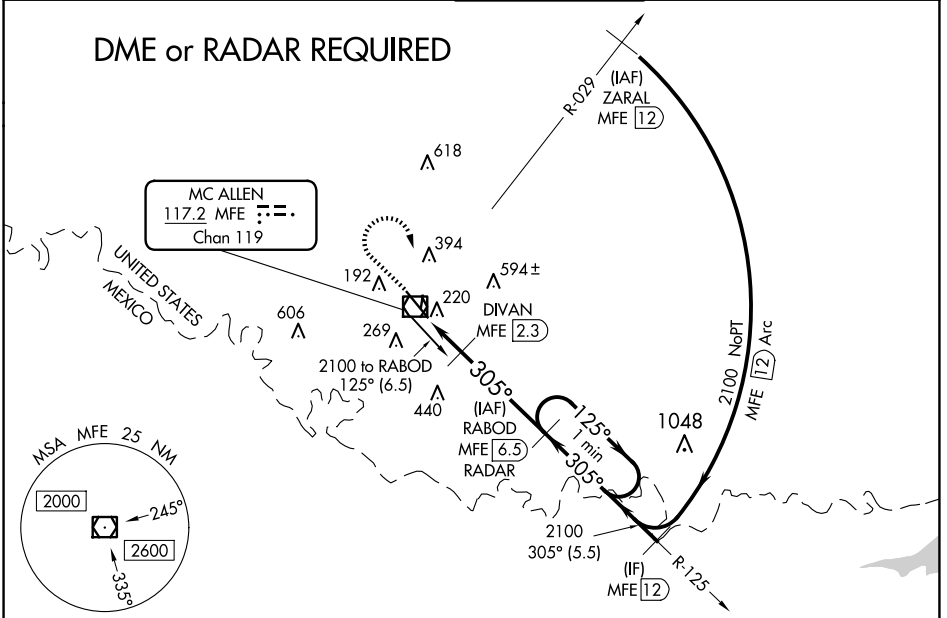
VOR/DME MFE <b>117.2</b> Chan <b>119</b>	APP CRS <b>305°</b>	Rwy Idg <b>7120</b> TDZE <b>102</b> Apt Elev <b>107</b>
--	------------------------	---

# VOR RWY 32

MC ALLEN INTL (MFE)

<p><b>⚠</b> Circling NA northeast of Rwy 14-32. When local altimeter setting not received, use Weslaco altimeter setting and increase all MDA 40 feet and S-32 Cat C/D and Circling Cat C visibility 1/8 mile, increase DIVAN Fix Minimums S-32 Cat C/D visibility 1/8 mile. VDP NA when using Weslaco altimeter setting.</p>		<p>MISSED APPROACH: Climb to 900 then climbing right turn to 2100 direct MFE VOR/DME.</p>		
ATIS <b>128.5</b>	VALLEY APP CON <b>126.55 377.2</b>	MC ALLEN TOWER* <b>118.5 (CTAF) 256.9</b>	GND CON <b>121.8</b>	UNICOM <b>122.95</b>

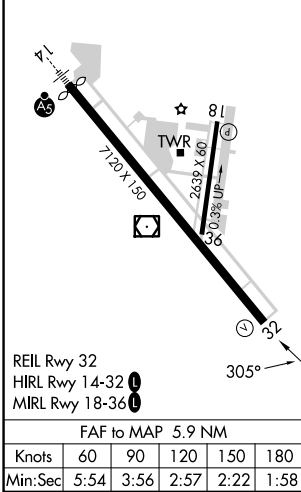
## DME or RADAR REQUIRED



SC-3, 17 APR 2025 to 15 MAY 2025

SC-3, 17 APR 2025 to 15 MAY 2025

ELEV 107	<b>D</b>	TDZE 102
----------	----------	----------



900	2100	MFE	RABOD MFE 6.5 RADAR	One Minute Holding Pattern
MFE VOR/DME	MFE 0.6	MFE 1.6	DIVAN MFE 2.3	125° → 2100
	1 NM	0.7 NM	4.2 NM	← 305°
				*660 TCH 52
				*700 when using Weslaco altimeter setting.
CATEGORY	A	B	C	D
S-32	660-1	558 (600-1)	660-1½	558 (600-1½)
<b>C</b> CIRCLING	660-1	553 (600-1)	660-1⅝	800-2¼
			553 (600-1⅝)	693 (700-2¼)
DIVAN FIX MINIMUMS				
S-32	480-1 378 (400-1)			
<b>C</b> CIRCLING	580-1	473 (500-1)	580-1½	800-2¼
			473 (500-1½)	693 (700-2¼)