

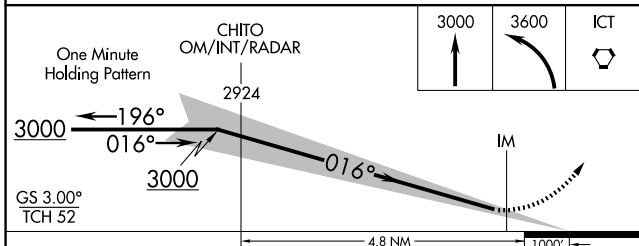
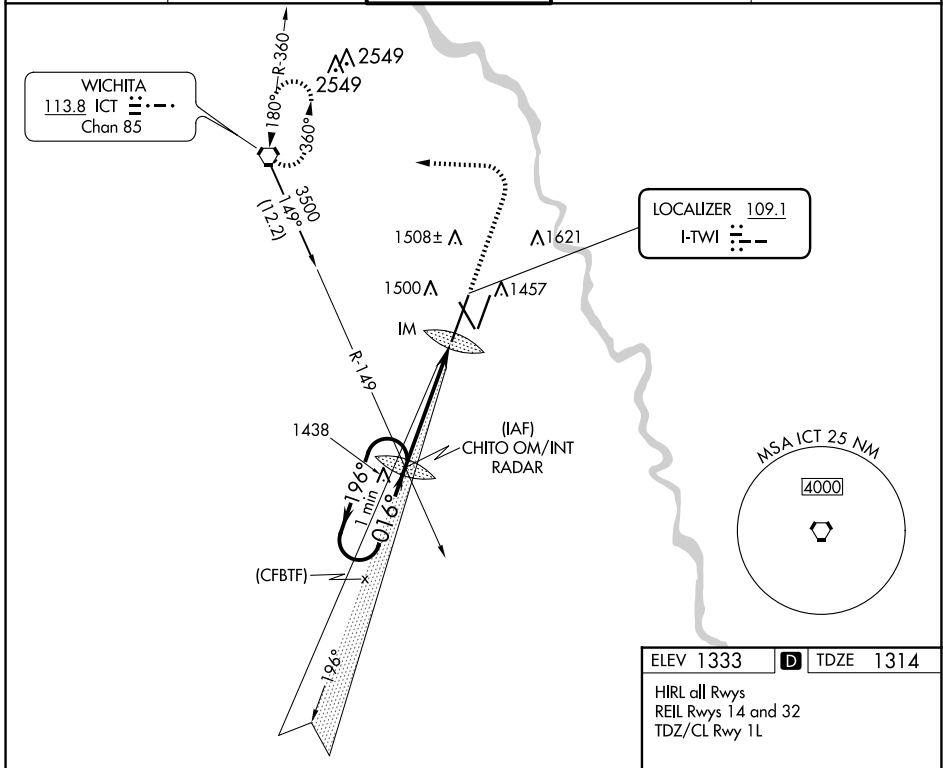
LOC I-TWI <b>109.1</b>	APP CRS <b>016°</b>	Rwy Idg <b>10302</b> TDZE <b>1314</b> Apt Elev <b>1333</b>
---------------------------	------------------------	--

# ILS RWY 1L (SA CAT I)

WICHITA DWIGHT D EISENHOWER NTL (ICT)

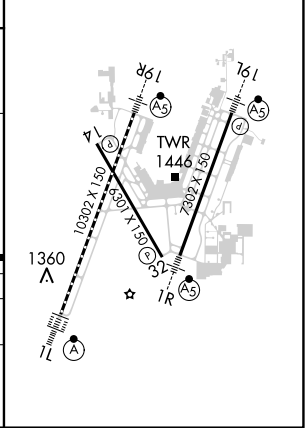
<p>Simultaneous approach authorized with Rwy 1R. Requires specific OPSPEC, MSPEC or LOA approval and use of HUD to DH.</p>	<p>ALS-2</p>	<p>MISSED APPROACH: Climb to 3000 then climbing left turn to 3600 direct ICT VORTAC and hold.</p>
--	--------------	---

ATIS <b>125.15</b>	WICHITA APP CON <b>126.7 353.5</b>	WICHITA TOWER <b>118.2 257.8</b>	GND CON <b>121.9 348.6</b>	CLNC DEL <b>125.7</b>
-----------------------	---------------------------------------	-------------------------------------	-------------------------------	--------------------------



ELEV 1333	<b>D</b>	TDZE 1314
-----------	----------	-----------

HIRL all Rwys  
REIL Rws 14 and 32  
TDZ/CL Rwy 1L



CATEGORY	A	B	C	D
S-ILS 1L	RA 149/14 150 DA 1464			

**SA CATEGORY I ILS - SPECIAL AIRCREW & AIRCRAFT CERTIFICATION REQUIRED**

NC-2, 17 APR 2025 to 15 MAY 2025

NC-2, 17 APR 2025 to 15 MAY 2025