


LOC I-HOV <b>110.5</b>	APP CRS <b>196°</b>	Rwy Idg <b>10302</b> TDZE <b>1330</b> Apt Elev <b>1333</b>
---------------------------	------------------------	--

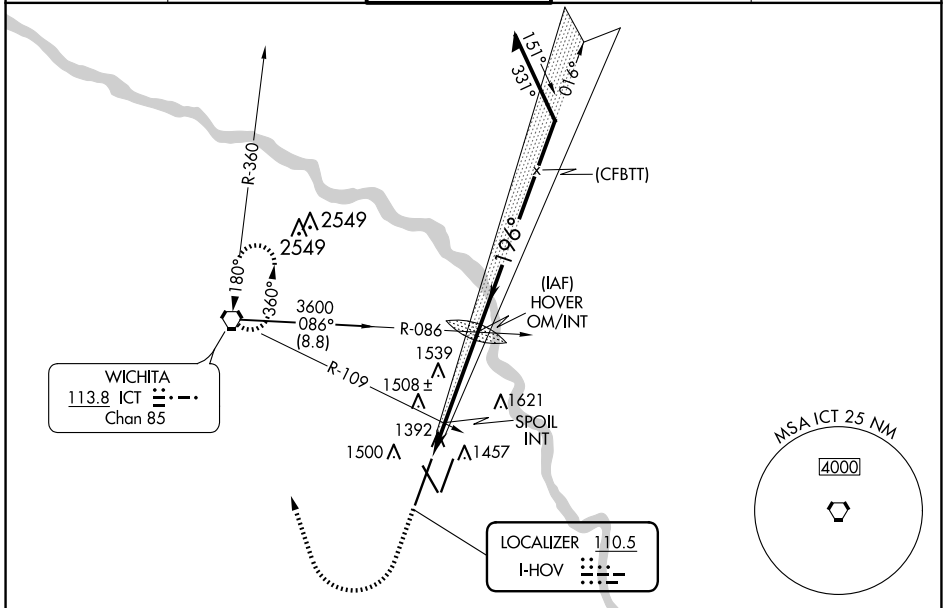
# ILS or LOC RWY 19R

WICHITA DWIGHT D EISENHOWER NTL (ICT)

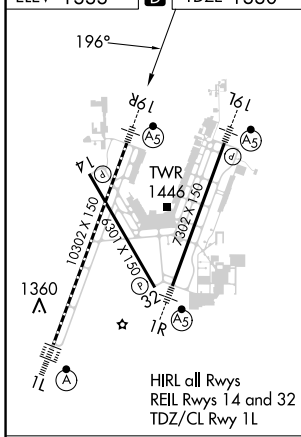
**⚠** Simultaneous approach authorized with Rwy 19L. For inoperative MALSR, increase S-ILS 19R# Cat E visibility to RVR 4000, S-LOC 19R Cat E visibility to 1/2 mile, SPOIL FIX minimums: S-LOC 19R Cat D and E visibility to RVR 5000.  
# RVR 1800 authorized with the use of FD or AP or HUD to DA.

**MALSR**  
 MISSED APPROACH: Climb to 3500 then climbing right turn to 3600 direct ICT VORTAC and hold.

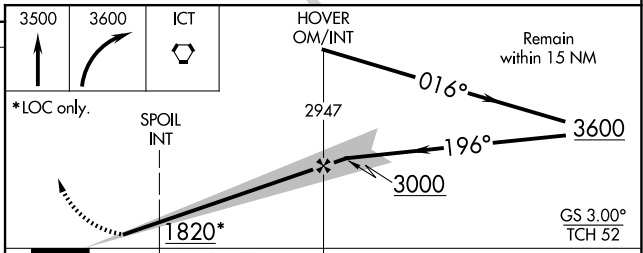
ATIS <b>125.15</b>	WICHITA APP CON <b>126.7 353.5</b>	WICHITA TOWER <b>118.2 257.8</b>	GND CON <b>121.9 348.6</b>	CLNC DEL <b>125.7</b>
-----------------------	---------------------------------------	-------------------------------------	-------------------------------	--------------------------



ELEV 1333	<b>D</b>	TDZE 1330
-----------	----------	-----------



FAF to MAP 4.9 NM					
Knots	60	90	120	150	180
Min:Sec	4:54	3:16	2:27	1:58	1:38



CATEGORY	A	B	C	D	E
S-ILS 19R#	1530/24 200 (200-1/2)				
S-LOC 19R	1820/24 490 (500-1/2)	1820/40 490 (500-3/4)	1820/50 490 (500-1)	1820/60 490 (500-1 1/4)	
CIRCLING	1820-1 487 (500-1)	1980-1 3/4 647 (700-1 1/4)	1980-2 647 (700-2)	2000-2 1/4 667 (700-2 1/4)	
SPOIL FIX MINIMUMS (DUAL VOR RECEIVERS REQUIRED)					
S-LOC 19R	1660/24 330 (400-1/2)		1660/40 330 (400-3/4)		
CIRCLING	1800-1 467 (500-1)	1980-1 3/4 647 (700-1 1/4)	1980-2 647 (700-2)	2000-2 1/4 667 (700-2 1/4)	

NC-2, 17 APR 2025 to 15 MAY 2025

NC-2, 17 APR 2025 to 15 MAY 2025