

LOC I-TWI <b>109.1</b>	APP CRS <b>016°</b>	Rwy Idg <b>10302</b> TDZE <b>1314</b> Apt Elev <b>1333</b>
---------------------------	------------------------	--

# ILS or LOC RWY 1L

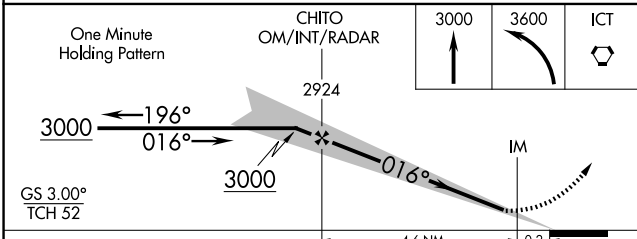
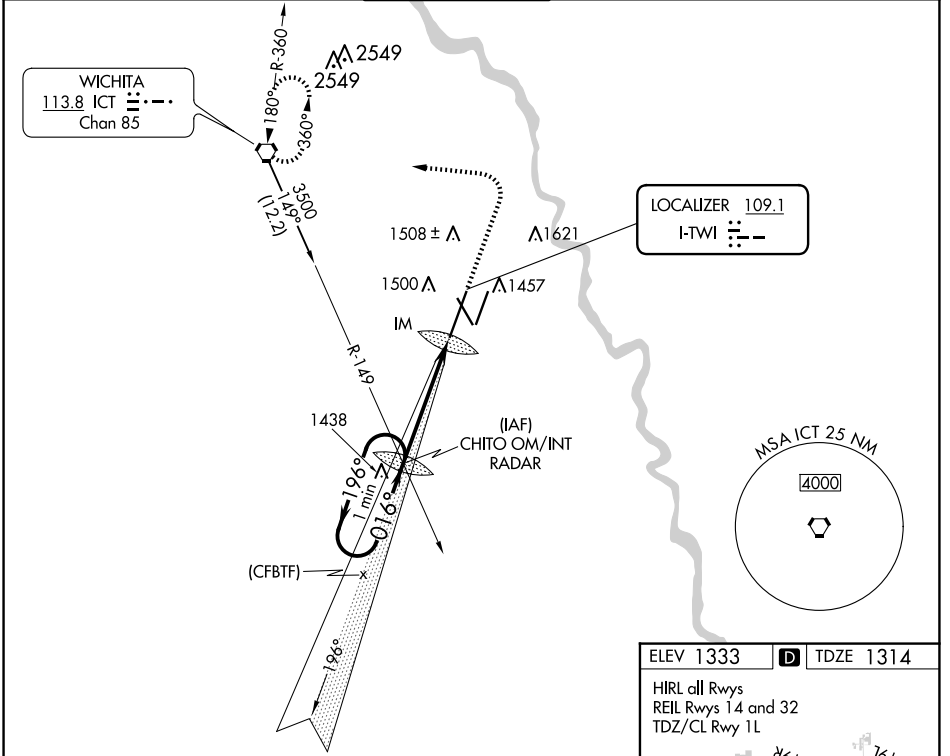
WICHITA DWIGHT D EISENHOWER NTL (ICT)

⚠ Simultaneous approach authorized with Rwy 1R.  
 ⚠ For inoperative ALSF-2, increase S-ILS 1L Cat E visibility to RVR 4000 and S-LOC 1L Cat E visibility to RVR 6000.

ALSF-2

MISSED APPROACH: Climb to 3000 then climbing left turn to 3600 direct ICT VORTAC and hold.

ATIS <b>125.15</b>	WICHITA APP CON <b>126.7 353.5</b>	WICHITA TOWER <b>118.2 257.8</b>	GND CON <b>121.9 348.6</b>	CLNC DEL <b>125.7</b>
-----------------------	---------------------------------------	-------------------------------------	-------------------------------	--------------------------



ELEV 1333 **D** TDZE 1314

HIRL all Rwys  
 REIL Rwys 14 and 32  
 TDZ/CL Rwy 1L

TWR 1446

1360 Δ

10302 X 1.50, 1307 X 1.50, 7302 X 1.50

161, 161

1R

016°

FAF to MAP 4.8 NM

Knots	60	90	120	150	180
Min:Sec	4:48	3:12	2:24	1:55	1:36

CATEGORY	A	B	C	D	E
S-ILS 1L	1514/18		200 (200-½)		
S-LOC 1L	1700/24		386 (400-½)		1700/40 386 (400-¾)
CIRCLING	1800-1	467 (500-1)	1980-1¾ 647 (700-1¾)	1980-2 647 (700-2)	2000-2¼ 667 (700-2¼)

NC-2, 17 APR 2025 to 15 MAY 2025

NC-2, 17 APR 2025 to 15 MAY 2025