

WAAS CH <b>87017</b> <b>W14A</b>	APP CRS <b>146°</b>	Rwy Idg TDZE Apt Elev	<b>6301</b> <b>1333</b> <b>1333</b>
--	------------------------	-----------------------------	---

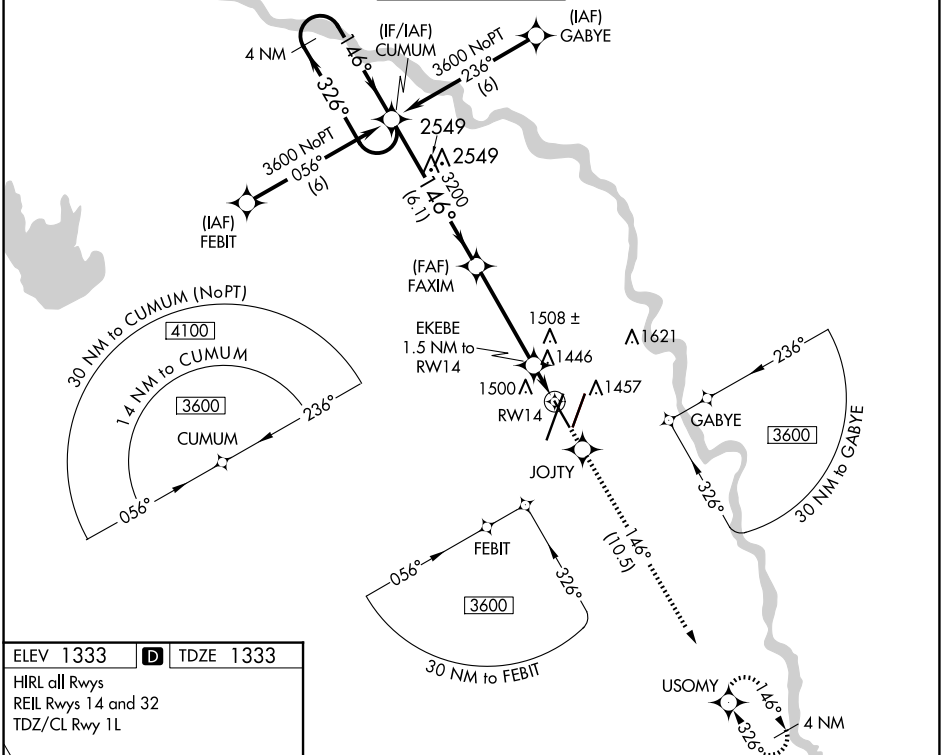
# RNAV (GPS) Y RWY 14

WICHITA DWIGHT D EISENHOWER NTL (ICT)

**▽** For uncompensated Baro-VNAV systems, LNAV/VNAV NA below -15°C (5°F) or above 54°C (130°F). DME/DME RNP-0.3 NA.

MISSED APPROACH: Climb to 3600 direct JOJTY and on track 146° to USOMY and hold.

ATIS <b>125.15</b>	WICHITA APP CON <b>126.7 353.5</b>	WICHITA TOWER <b>118.2 257.8</b>	GND CON <b>121.9 348.6</b>	CLNC DEL <b>125.7</b>
-----------------------	---------------------------------------	-------------------------------------	-------------------------------	--------------------------

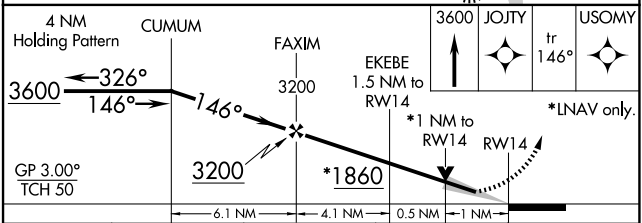
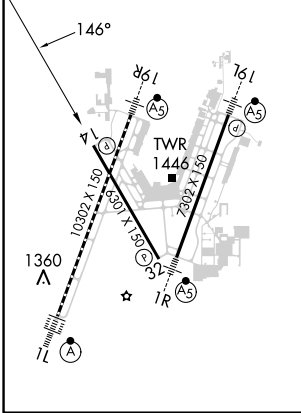


NC-2, 17 APR 2025 to 15 MAY 2025

NC-2, 17 APR 2025 to 15 MAY 2025

ELEV 1333 **D** TDZE 1333

HIRL all Rwys  
REIL Rws 14 and 32  
TDZ/CL Rwy 1L



CATEGORY	A	B	C	D
LPV DA		1583- <sup>3</sup> / <sub>4</sub>	250 (300- <sup>3</sup> / <sub>4</sub> )	
LNAV/VNAV DA		1799-1 <sup>3</sup> / <sub>4</sub>	466 (500-1 <sup>3</sup> / <sub>4</sub> )	
LNAV MDA		1700-1	367 (400-1)	
<b>C</b> CIRCLING	1800-1	467 (500-1)	1980-1 <sup>3</sup> / <sub>4</sub> 647 (700-1 <sup>3</sup> / <sub>4</sub> )	1980-2 647 (700-2)