

WAAS CH 61219 W01A	APP CRS 016°	Rwy Idg 10302 TDZE 1314 Apt Elev 1333
--	------------------------	--

RNAV (GPS) Y RWY 1L

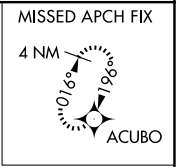
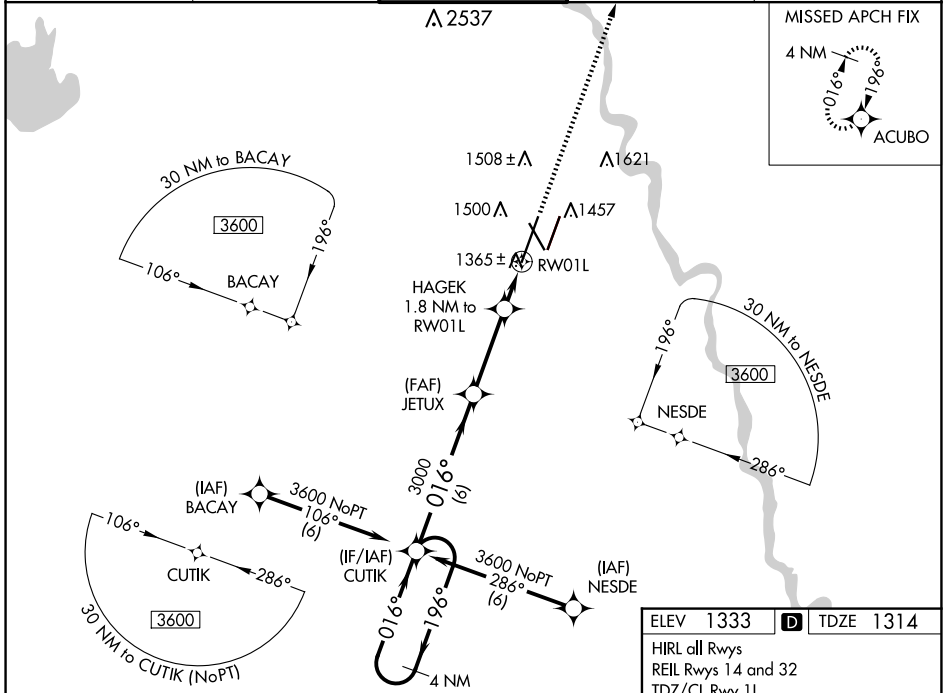
WICHITA DWIGHT D EISENHOWER NTL (ICT)

⚠ Inoperative table does not apply to LNAV Cat D. For uncompensated Baro-VNAV systems, LNAV/VNAV NA below -15°C (5°F) or above 54°C (130°F). For inoperative ALSF-2, increase LNAV Cat C/D visibility to RVR 4500. DME/DME RNP-0.3 NA. Simultaneous approach authorized with ILS or LOC RWY 1R. LNAV procedure NA during simultaneous operations. Use of FD or AP providing RNAV track guidance required during simultaneous operations.

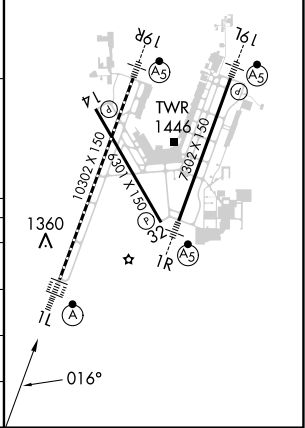
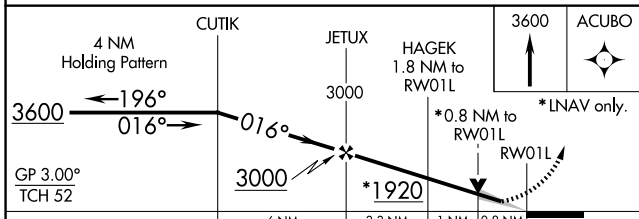


MISSED APPROACH:
Climb to 3600 direct ACUBO and hold.

ATIS 125.15	WICHITA APP CON 126.7 353.5	WICHITA TOWER 118.2 257.8	GND CON 121.9 348.6	CLNC DEL 125.7
-----------------------	---------------------------------------	-------------------------------------	-------------------------------	--------------------------



ELEV 1333	D	TDZE 1314
HIRL all Rwys		
REIL Rwys 14 and 32		
TDZ/CL Rwy 1L		



CATEGORY	A	B	C	D
LPV DA		1514/18	200 (200-½)	
LNAV/VNAV DA		1615/24	301 (300-½)	
LNAV MDA		1620/24	306 (300-½)	
C CIRCLING	1800-1	467 (500-1)	1980-1¾ 647 (700-1¾)	1980-2 647 (700-2)

NC-2, 17 APR 2025 to 15 MAY 2025

NC-2, 17 APR 2025 to 15 MAY 2025