


LOC/DME I-RMZ 111.7 Chan 54	APP CRS 129°	Rwy Idg 5012 TDZE 54 Apt Elev 55
---	------------------------	---

ILS or LOC RWY 13

KNOX COUNTY RGNL (R.KD)

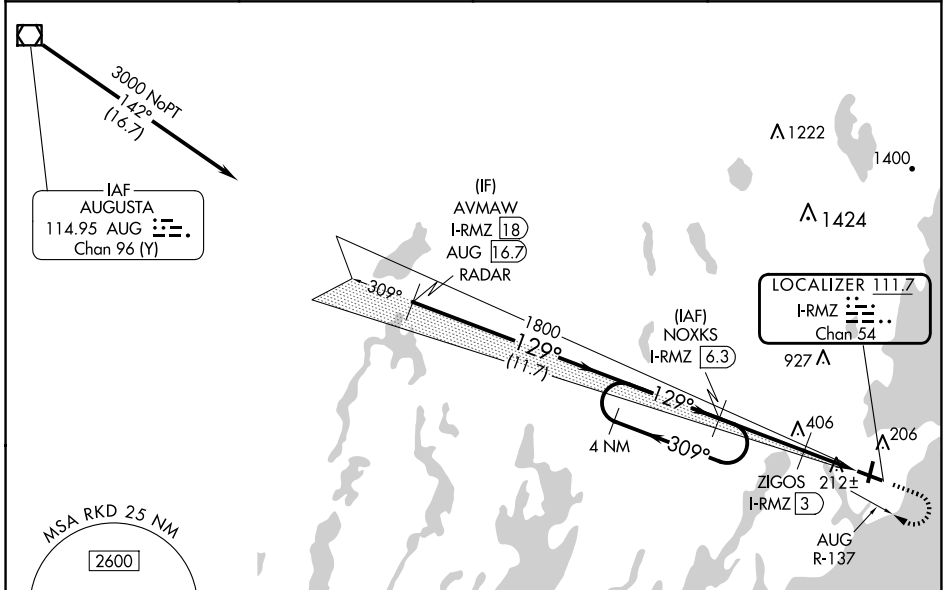
DME required.

▼ VDP NA when using Wiscasset altimeter setting. When local altimeter setting not received, use Wiscasset altimeter setting and increase all DA to 319 feet and all MDA 80 feet, increase S-LOC 13 Cats C/D visibility ¾ SM and Circling Cat C ½ SM. For inop ALS when using Wiscasset altimeter setting increase S-ILS 13 all Cats visibility to ¾ SM and S-LOC 13 Cats C/D to 1 ¾ SM.

MALSR 

MISSED APPROACH: Climb to 700 then climbing right turn to 2000 on heading 348° and on AUG R-137 to NOXKS/I-RMZ 6.3 DME and hold.

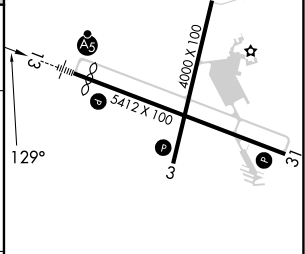
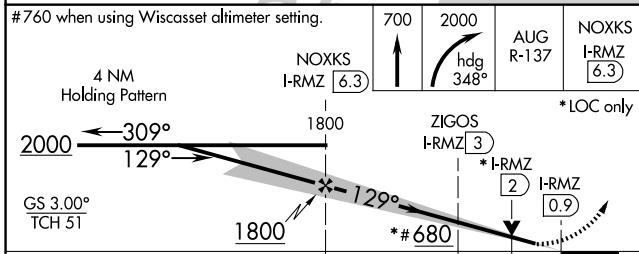
AWOS-3PT 119.025	PORTLAND APP CON* 120.4 299.2	CLNC DEL 123.8	UNICOM 123.05 (CTAF)
----------------------------	---	--------------------------	--------------------------------



NE-1, 17 APR 2025 to 15 MAY 2025

NE-1, 17 APR 2025 to 15 MAY 2025

ELEV 55	D	TDZE 54
---------	----------	---------



CATEGORY	A	B	C	D
S-ILS 13	254-½		200 (200-½)	
S-LOC 13	440-½	386 (400-½)	440-⅝	386 (400-⅝)
C CIRCLING	580-1 525 (600-1)		720-1¾ 665 (700-1¾)	1140-3 1085 (1100-3)

REIL Rwy 3 and 31 **L**

MIRL Rwy 3-21 **L**

HIRL Rwy 13-31 **L**