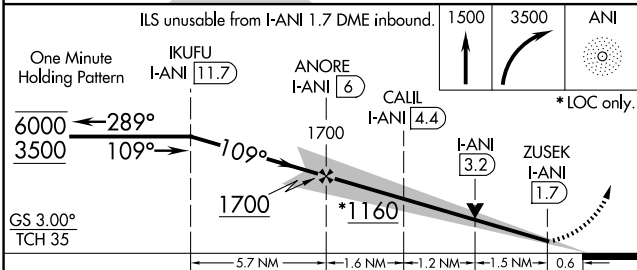
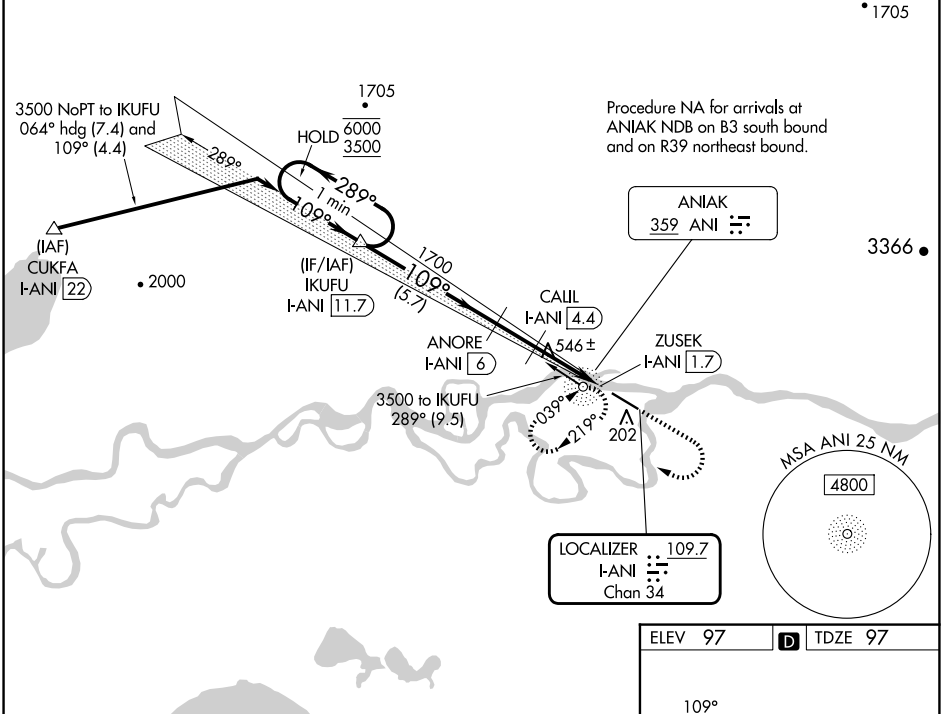


LOC/DME	I-ANI	Rwy Idg	<b>5400</b>
<b>109.7</b>		TDZE	<b>97</b>
Chan <b>34</b>	APP CRS	Apt Elev	<b>97</b>
	<b>109°</b>		

# ILS or LOC RWY 11

ANIAK (ANI)(PANI)

DME required.		MALSF	MISSED APPROACH: Climb to 1500 then climbing right turn to 3500 direct ANI NDB and hold, continue climb-in-hold to 3500. (ADF required)
<p>⚠ Circling NA north of Rwy 11-29. Rwy 11 helicopter visibility reduction below 3/4 SM NA. Inop table does not apply to S-ILS all Cats.</p> <p>❄ -37°C</p>			
AWOS-3P	ANCHORAGE CENTER	CLNC DEL	CTAF
<b>124.3</b>	<b>118.15 251.05</b>	<b>118.15</b>	<b>122.10</b>



ELEV 97	TDZE 97
<p>109°</p> <p>6200 X 100</p> <p>138</p>	
HIRL Rwy 11-29	

CATEGORY	A	B	C	D
S-ILS 11	347-3/4 250 (300-3/4)			
S-LOC 11	800-3/4 703 (800-3/4)		800-1 3/4 703 (800-1 3/4)	
CIRCLING	800-1 703 (800-1)		860-2 1/4 763 (800-2 1/4)	1200-3 1103 (1200-3)

AK, 17 APR 2025 to 12 JUN 2025

AK, 17 APR 2025 to 12 JUN 2025