

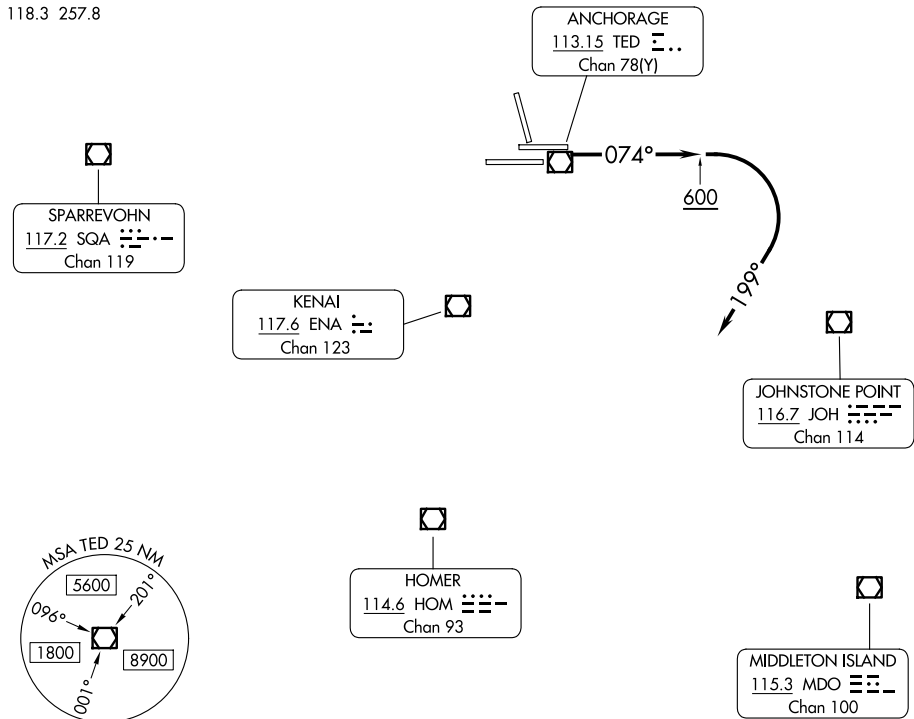
POTTR THREE DEPARTURE

TED STEVENS ANCHORAGE INTL (ANC) (PANC)
AL-1500 (FAA) ANCHORAGE, ALASKA

ANCHORAGE DEP CON
126.4 270.25
D-ATIS
135.5
CLNC DEL
119.4 323.1
GND CON
121.9 338.25
ANCHORAGE TOWER
118.3 257.8

RADAR required.

**TOP ALTITUDE:
4000**



TAKEOFF MINIMUMS

Rwys 15, 25L/R, 33: NA - ATC.

Rwy 7L: 300-1½ or standard with minimum climb of 255 feet/NM to 400.

Rwy 7R: 300-1 or standard with minimum climb of 285 feet/NM to 400.

NOTE: Do not exceed 200K until established on 199° heading.

NOTE: Chart not to scale.

DEPARTURE ROUTE DESCRIPTION

TAKEOFF RUNWAYS 7L/R: Climb on heading 074° to 600, then climbing right turn on heading 199°. Thence. . . .

. . . .expect RADAR vectors to assigned route or depicted fix. Maintain 4000. Expect further clearance to filed altitude within 10 minutes after departure.

POTTR THREE DEPARTURE

AK, 17 APR 2025 to 12 JUN 2025

AK, 17 APR 2025 to 12 JUN 2025