

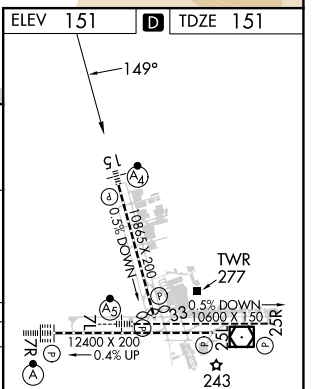
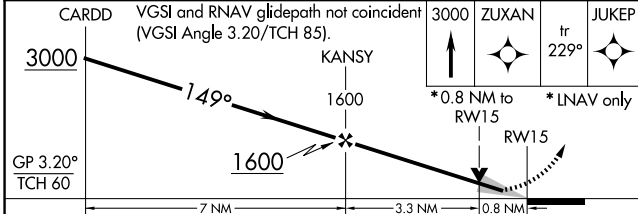
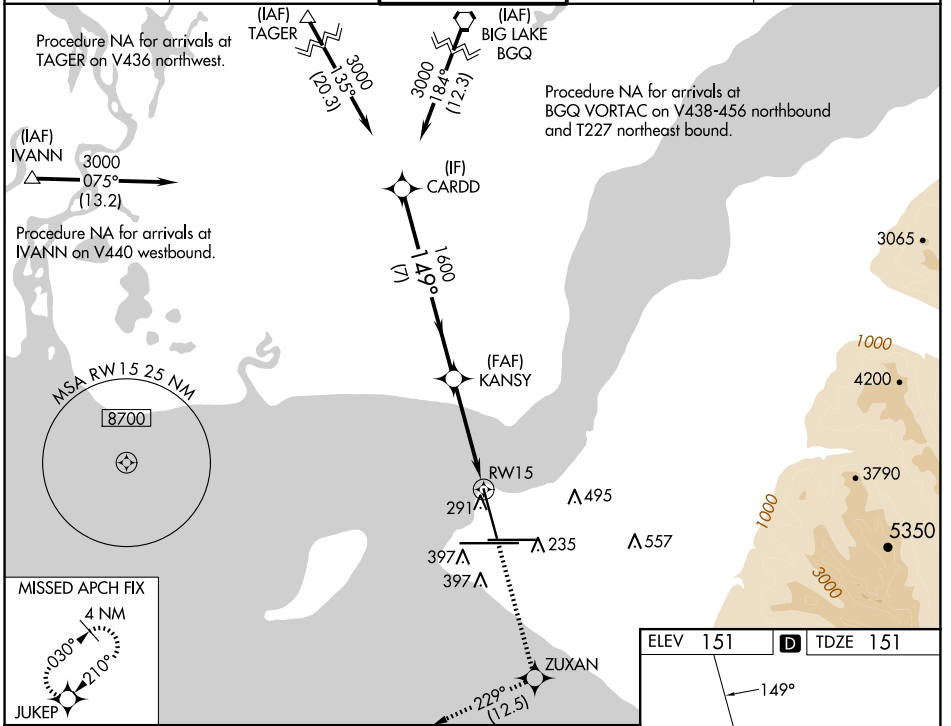
WAAS CH 90115 W15A	APP CRS 149°	Rwy Idg 10000 TDZE 151 Apt Elev 151
--	------------------------	--

RNAV (GPS) RWY 15

TED STEVENS ANCHORAGE INTL (ANC) (PANC)

RNP APCH.	MALSF 	MISSED APPROACH: Climb to 3000 direct ZUXAN and on track 229° to JUKEP and hold.
Inop table does not apply to LPV, LNAV/VNAV. For uncompensated Baro-VNAV systems, LNAV/VNAV NA below -21°C or above 54°C. -21°C For inop ALS, increase LNAV Cat C/D visibility to 1 3/8 SM.		

D-ATIS 135.5	ANCHORAGE APP CON 118.6 290.5	ANCHORAGE TOWER 118.3 257.8	GND CON 121.9 338.25	CLINC DEL 119.4 323.1
------------------------	---	---------------------------------------	--------------------------------	---------------------------------



CATEGORY	A	B	C	D
LPV DA	351/40	200 (200-3/4)	401/40	250 (300-3/4)
LNAV/VNAV DA	404/40 253 (300-3/4)			
LNAV MDA	600/40	449 (500-3/4)	600/60	449 (500-1 1/4)
CIRCLING	700-1	549 (600-1)	800-1 3/4 649 (700-1 3/4)	920-2 1/2 769 (800-2 1/2)

AK, 17 APR 2025 to 12 JUN 2025

AK, 17 APR 2025 to 12 JUN 2025