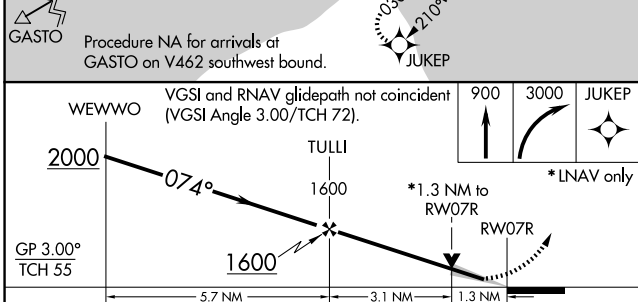
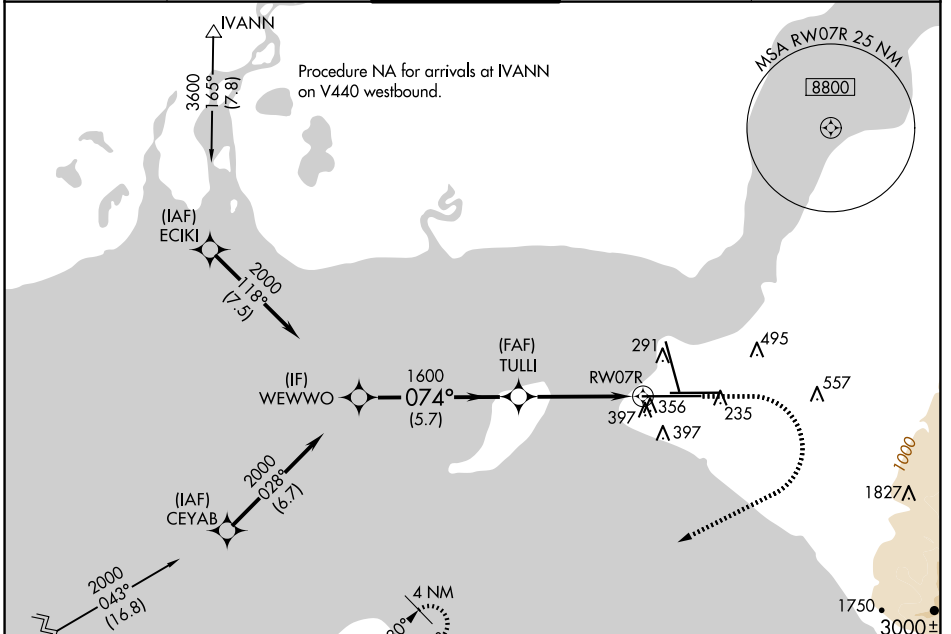


WAAS CH 81815 W07A	APP CRS 074°	Rwy Idg 12400 TDZE 132 Apt Elev 151
--	------------------------	--

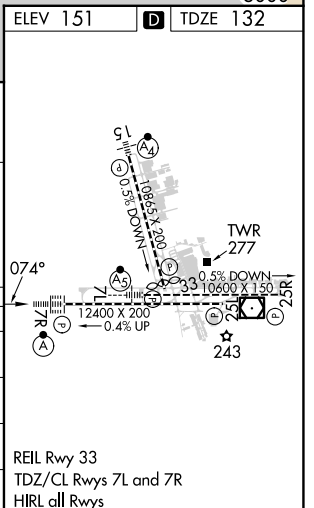
RNAV (GPS) Y RWY 7R

TED STEVENS ANCHORAGE INTL (ANC) (PANC)

RNP APCH.		ALSIF-2	MISSED APPROACH: Climb to 900 then climbing right turn to 3000 direct JUKEP and hold.	
⚠ For uncompensated Baro-VNAV systems, LNAV/VNAV NA below -18°C or above 54°C. For inop ALS, increase LNAV/VNAV all Cats and LNAV Cat C/D visibility to 1/2 SM. ❄ -21°C				
D-ATIS 135.5	ANCHORAGE APP CON 118.6 290.5	ANCHORAGE TOWER 118.3 257.8	GND CON 121.9 338.25	CLNC DEL 119.4 323.1



CATEGORY	A	B	C	D
LPV DA	332/18		200 (200-1/2)	
LNAV/VNAV DA	648/55		516 (500-1)	
LNAV MDA	620/24 488 (500-1/2)		620/50 488 (500-1)	
CIRCLING	700-1 549 (600-1)		800-1 3/4 649 (700-1 3/4) 920-2 1/2 769 (800-2 1/2)	



AK, 17 APR 2025 to 12 JUN 2025

AK, 17 APR 2025 to 12 JUN 2025