

# RNAV (GPS) RWY 27

APCH CRS <b>258°</b>	Rwy ldg <b>4800</b>
	THRE <b>14</b>
	Arpt Elev <b>14</b>

[USAF]

CAPE LISBURNE LRRS (PALU)

RNP APCH - GFS

**▼** \* Circling not authorized S of runway 9-27  
Night operations not authorized.

MISSED APPROACH: (Do not exceed 220 KIAS until turn completion).  
Climbing right turn to 3200 direct TAKME and hold.

ANCHORAGE CENTER  
**119.65 363.25**

KOTZEBUE RADIO \*  
**122.3**

CTAF  
**126.2**

**MILITARY CERTIFIED  
AIRCRAFTS OR AUTHORIZED  
CONTRACT AIRCRAFT  
ONLY**

**NOT FOR CIVIL USE**

Helo vis reduction below 1 mile not authorized.  
Uncontrolled Airspace below 700' AGL  
within 7 NM of Cape Lisburne airport.

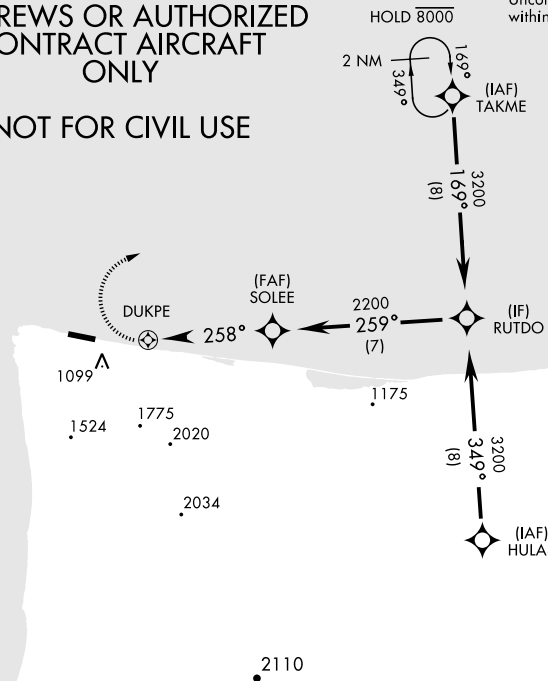
Unlit weather equipment,  
168' MSL, 278' from thld,  
19' right of course.

Terrain 630' MSL,  
1.88 NM from thld,  
1159' left of course.

Terrain 31' MSL,  
200' from thld,  
200' left of course.

Terrain 30' MSL,  
244' from thld,  
172' left of course.

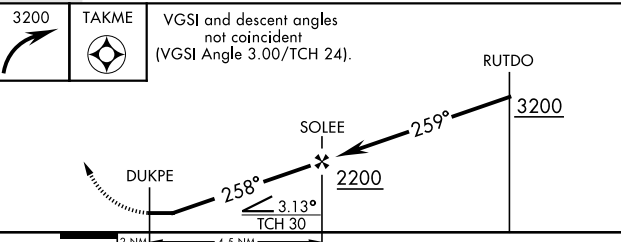
Terrain 597' MSL,  
1.91 NM from thld,  
1118' left of course.



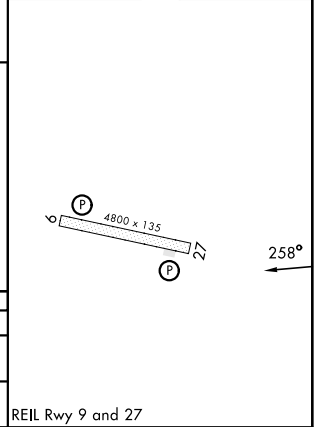
AK, 17 APR 2025 to 12 JUN 2025

AK, 17 APR 2025 to 12 JUN 2025

EMERG SAFE ALT 100 NM 6700



ELEV	14	THRE	14
------	----	------	----



CATEGORY	A	B	C	D
LNVA MDA	1320-2½ 1306 (1400-2½)		1320-3 1306 (1400-3)	NOT AUTHORIZED
<b>☐</b> CIRCLING *	1320-2½ 1306 (1400-2½)		1320-3 1306 (1400-3)	NOT AUTHORIZED

REIL Rwy 9 and 27

# RNAV (GPS) RWY 27