


LOC I-ANB 111.5	APP CRS 052°	Rwy Idg 7000
		TDZE 595
		Apt Elev 612

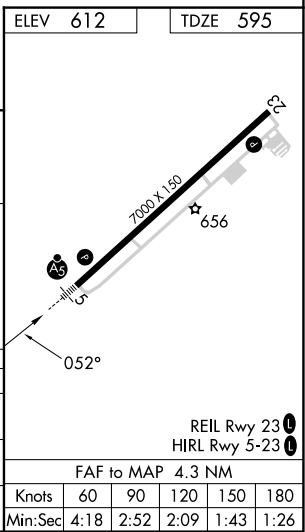
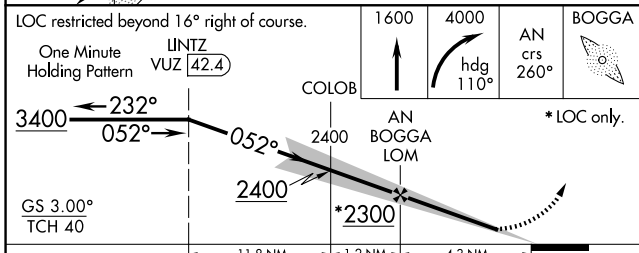
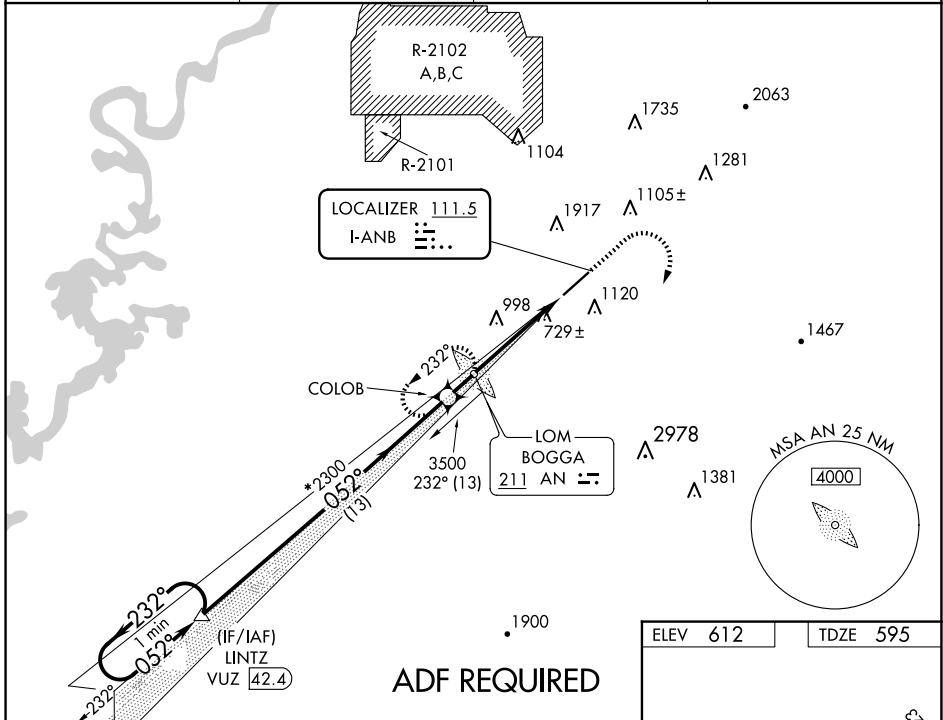
ILS Z or LOC Z RWY 5

ANNISTON RGNL (ANB)

⚠ Circling NA north of Rwy 5-23. ADF required. When local altimeter setting not received, use Gadsden altimeter setting: increase DA to 975 and all visibilities ¼ SM; all MDAs 80 feet, and all Cat C visibilities ½ SM. For inop ALS increase S-ILS 5 all Cats visibility to 1 SM. For inop ALS when using Gadsden altimeter setting, increase S-ILS 5 all Cats visibility to 1¼ SM.

MALSR

MISSED APPROACH: Climb to 1600 then climbing right turn to 4000 on heading 110° then on BOGGA LOM 260° course to BOGGA LOM and hold.

ASOS 119.675	BIRMINGHAM APP CON 132.15 285.45	CTAF 123.60	UNICOM 123.0
------------------------	--	-----------------------	------------------------



CATEGORY	A	B	C	D
S-ILS 5	909-½ 314 (300-½)			
S-LOC 5	1120-½ 525 (600-½)	1120-1 525 (600-1)		NA
C CIRCLING	1420-1 808 (900-1)	1420-2¼ 808 (900-2¼)		1820-3 1208 (1300-3)

SE-4, 17 APR 2025 to 15 MAY 2025

SE-4, 17 APR 2025 to 15 MAY 2025