

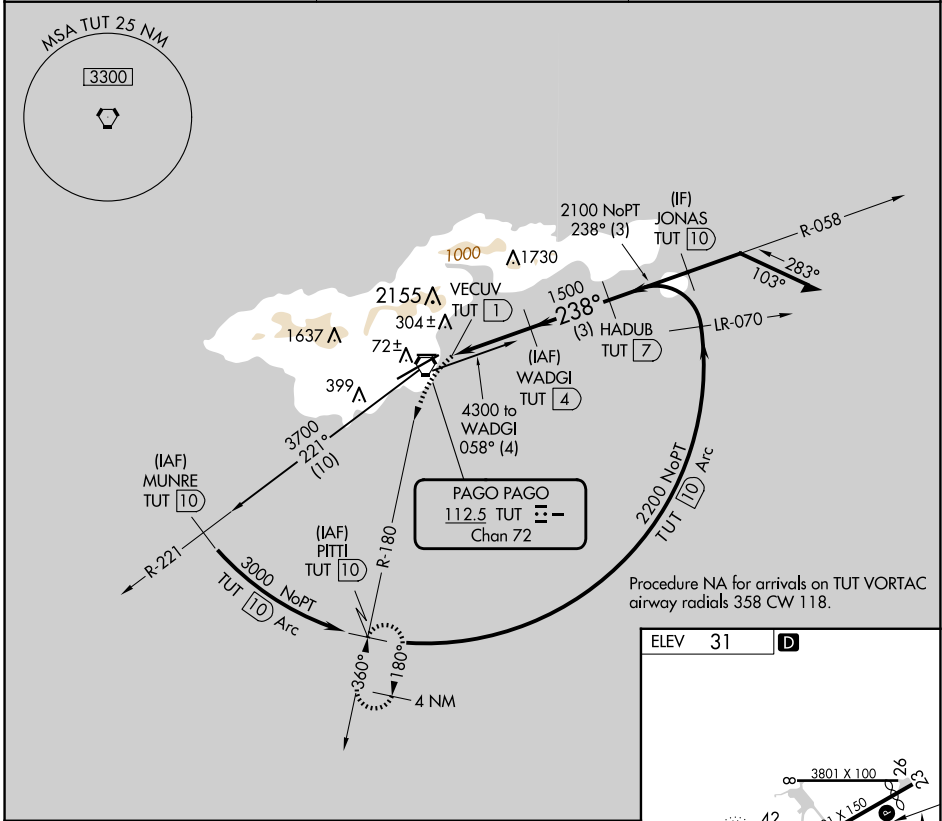
VORTAC TUT 112.5 Chan 72	APP CRS 238°	Rwy Idg TDZE Apt Elev	N/A N/A 31
---------------------------------------	------------------------	-----------------------------	---------------------------------------

VOR or TACAN-B

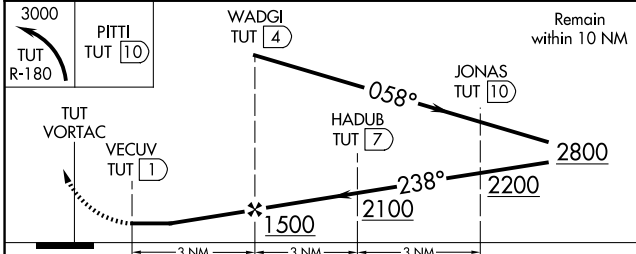
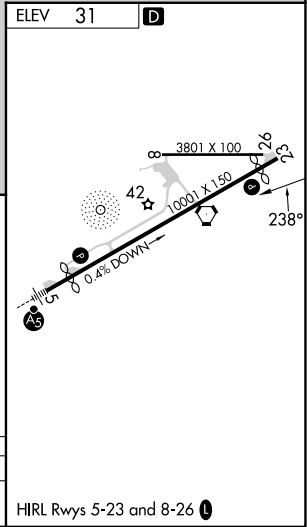
PAGO PAGO INTL (PPG) (NSTU)

DME required.	MISSED APPROACH: Climbing left turn to 3000 on TUT VORTAC R-180 to PITTI/10 DME and hold, continue climb-in-hold to 3000.
∇ ▲ Circling NA northwest of Rwy 5-23.	

FALEOLO APP CON 118.1 6.553 (HF)	CTAF 122.9	118.30
--	----------------------	---------------



Procedure NA for arrivals on TUT VORTAC airway radials 358 CW 118.



CATEGORY	A	B	C	D
C CIRCLING	560-1 529 (600-1)	700-1 669 (700-1)	820-2¼ 789 (800-2¼)	860-2¾ 829 (900-2¾)