

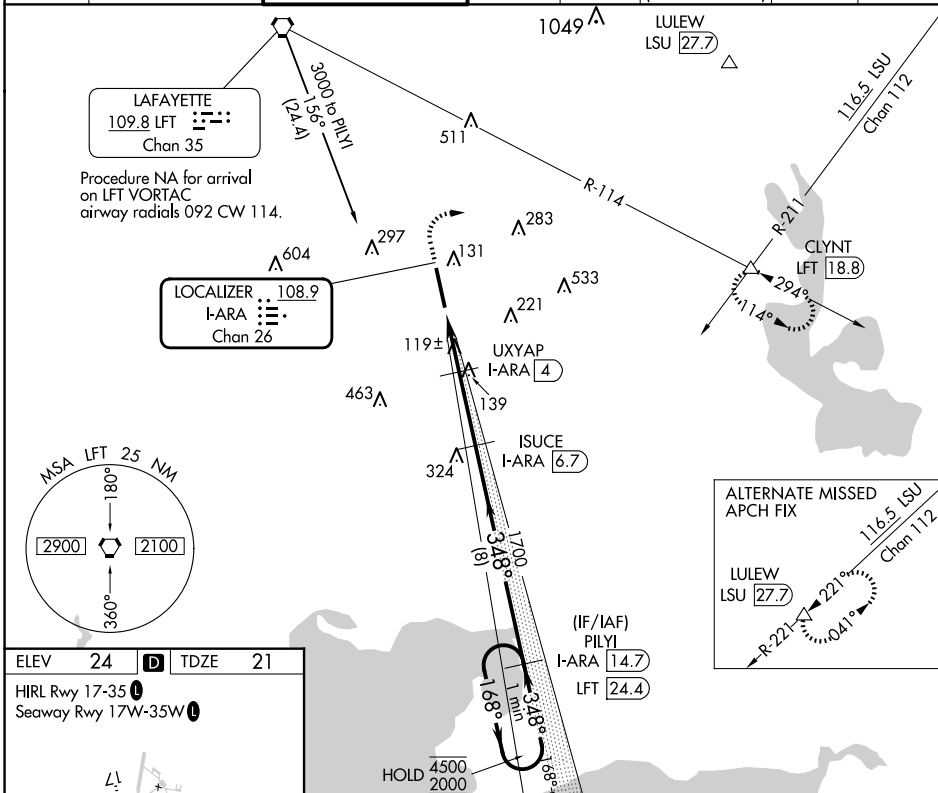
LOC/DME I-ARA 108.9 Chan 26	APP CRS 348°	Rwy Idg 8002 TDZE 21 Apt Elev 24
---	------------------------	---

ILS or LOC RWY 35
ACADIANA RGNL (A.R.A.)

DME required for procedure entry. DME required for LOC only.

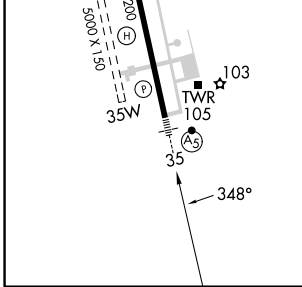
▼ Circling NA to Rwy's 17W and 35W. For inop ALS increase S-ILS 35 ▲ Cat E visibility to 3/4 SM and S-LOC 35 Cats C/D/E visibility to 1 1/8 SM.	MALSR AS	MISSED APPROACH: Climb to 800 then climbing right turn to 2000 on heading 080° and LFT R-114 to CLYNT INT/LFT 18.8 DME and hold.
--	--------------------	--

ASOS 133.325	LAFAYETTE APP CON* 121.1 268.7	ACADIANA TOWER* 125.0 (CTAF) 239.3	GND CON 121.7	CLNC DEL 121.7	CLNC DEL 118.05 (when twr closed)	UNICOM 122.95	122.7
------------------------	--	--	-------------------------	--------------------------	--	-------------------------	--------------

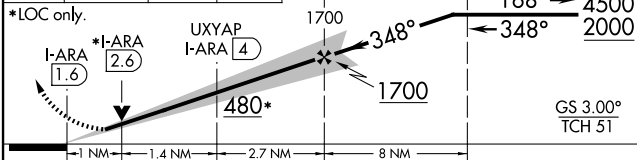


ELEV 24	D	TDZE 21
----------------	----------	----------------

HIRL Rwy 17-35
Seaway Rwy 17W-35W



800	2000	LFT	CLYNT	PIYI	One Minute Holding Pattern
↑	hdg 080°	R-114	△	I-ARA 14.7	



CATEGORY	A	B	C	D	E
S-ILS 35	221-1/2 200 (200-1/2)				
S-LOC 35	440-3/4 419 (500-3/4)				
C CIRCLING	440-1 416 (500-1)	480-1 456 (500-1)	600-1 1/2 576 (600-1 1/2)	680-2 656 (700-2)	900-3 876 (900-3)

SC-4, 17 APR 2025 to 15 MAY 2025

SC-4, 17 APR 2025 to 15 MAY 2025