

WAAS CH 90319 W18A	APP CRS 184°	Rwy Idg TDZE Apt Elev	6557 80 90
--	------------------------	-----------------------------	---------------------------------------

RNAV (GPS) RWY 18

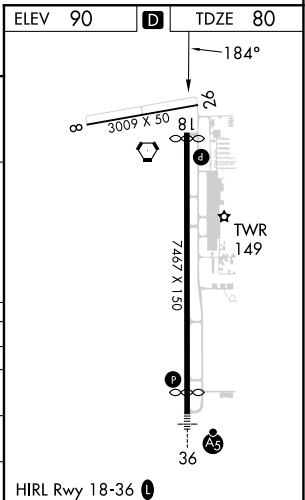
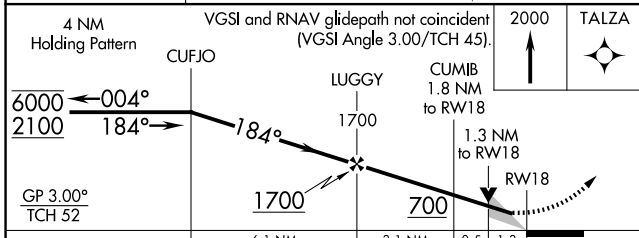
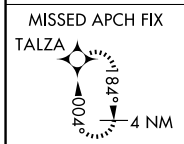
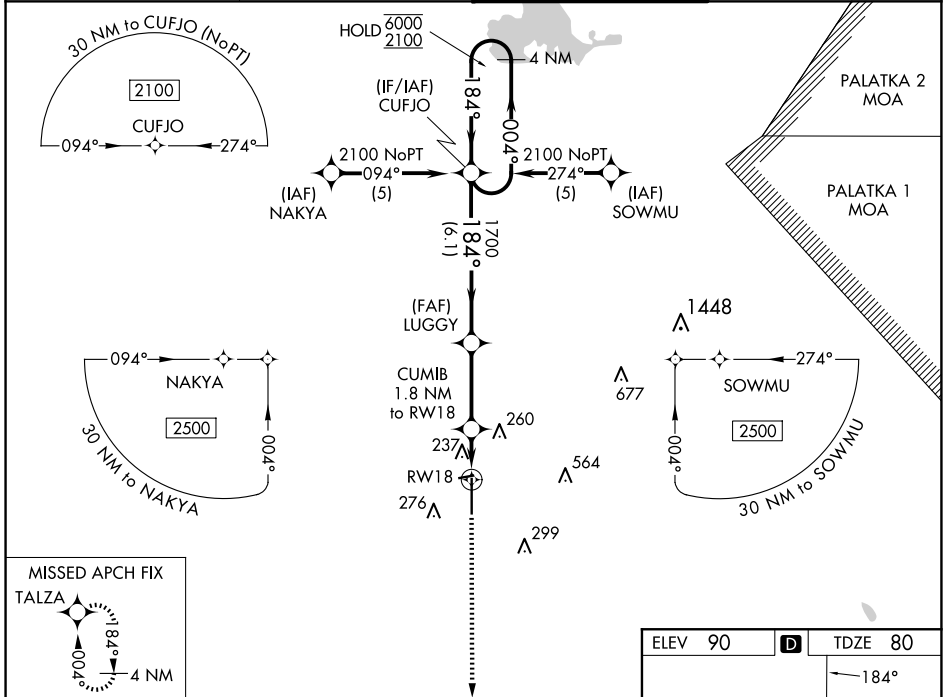
OCALA INTL-JIM TAYLOR FLD (OCF)

RNP APCH-GPS.

▼ For uncompensated Baro-VNAV systems, LNAV/VNAV NA below -5°C or above 54°C.
▲ When local altimeter setting not received, use GNV altimeter setting and increase LPV DA to 361 feet and all visibilities ½ SM; increase LNAV/VNAV DA to 595 feet and all visibilities ½ SM, increase all MDA's 100 feet and LNAV visibility Cats C and D ¼ SM and Circling visibility Cats C and D ½ SM. Baro-VNAV and VDP NA when using GNV altimeter setting.

MISSED APPROACH:
Climb to 2000 direct
TALZA and hold.

ATIS 128.125	JACKSONVILLE APP CON 118.6 251.15	OCALA TOWER ★ 119.25 (CTAF) 0	GND CON 121.4
------------------------	---	---	-------------------------



CATEGORY	A	B	C	D
LPV DA		280-¾	200 (200-¾)	
LNAV/VNAV DA		514-1¼	434 (500-1¼)	
LNAV MDA	540-1	460 (500-1)	540-1¾	460 (500-1¾)
CIRCLING	600-1	510 (600-1)	760-1¾ 670 (700-1¾)	920-2¾ 830 (900-2¾)

SE-3, 17 APR 2025 to 15 MAY 2025

SE-3, 17 APR 2025 to 15 MAY 2025