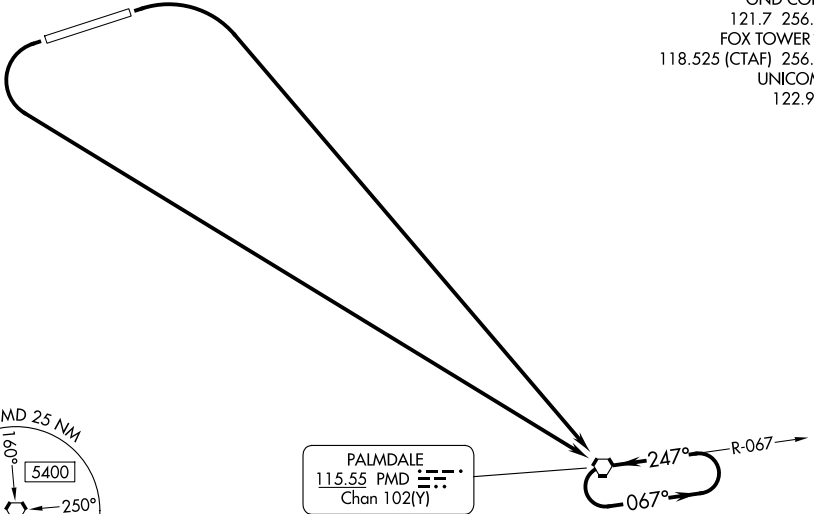


# PALMDALE ONE DEPARTURE (OBSTACLE)

JOSHUA DEP CON  
126.1 290.3  
WJF ATIS  
126.3  
PMD ATIS  
118.275  
GND CON  
121.7 256.9  
FOX TOWER \*  
118.525 (CTAF) 256.9  
UNICOM  
122.95



SW-3, 17 APR 2025 to 15 MAY 2025

SW-3, 17 APR 2025 to 15 MAY 2025

### TAKEOFF MINIMUMS

Rwy 6: Standard with minimum climb of 240' per NM to 4800,  
or 3700-3 for climb in visual conditions.  
Rwy 24: Standard with minimum climb of 351' per NM to 4800,  
or 3700-3 for climb in visual conditions.

### TAKEOFF OBSTACLE NOTES

Rwy 6: Trees beginning 1169' from DER, 590' right of centerline, up to 2374' MSL.

NOTE: Chart not to scale.

### DEPARTURE ROUTE DESCRIPTION

TAKEOFF RUNWAY 6: Climbing right turn direct PMD VORTAC and hold, thence. . . .

TAKEOFF RUNWAY 24: Climbing left turn direct PMD VORTAC and hold, thence. . . .

. . . .continue climb-in-hold to cross PMD VORTAC at or above MCA/MEA for route of flight.

VCOA ALL RUNWAYS: Obtain ATC approval for VCOA when requesting IFR clearance.  
Climb in visual conditions to cross General WM J Fox Airfield at or above 5900 before  
proceeding on course.

# PALMDALE ONE DEPARTURE (OBSTACLE)