

WAAS CH <b>93702</b> <b>W06A</b>	APP CRS <b>057°</b>	Rwy Idg TDZE Apt Elev	<b>7201</b> <b>2351</b> <b>2351</b>
--	------------------------	-----------------------------	---

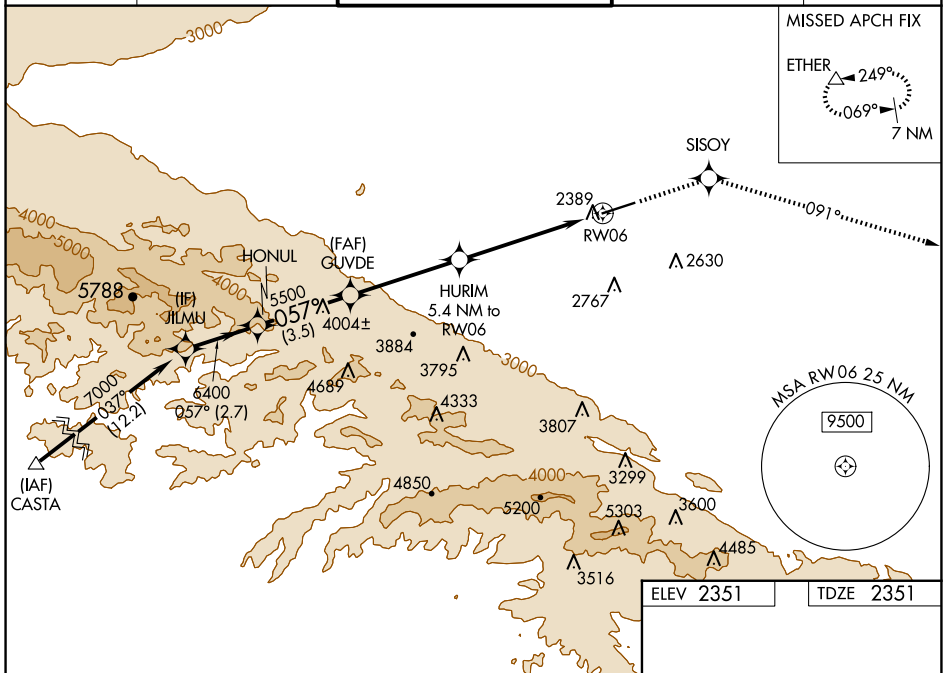
# RNAV (GPS) RWY 6

GENERAL WM J FOX AIRFIELD (WJF')

**▼** When VGSI inop, Straight-in/Circling Rwy 6 procedure NA at night.  
**▲** DME/DME RNP-0.3 NA. Visibility reduction by helicopters NA.  
**▼** For uncompensated Baro-VNAV systems, LNAV/VNAV NA below -19°C (-2°F) or above 45°C (113°F). When local altimeter setting not received, use Palmdale altimeter setting: increase LPV DA to 2661 feet, LNAV/VNAV DA to 2709 feet and all MDAs 60 feet, and increase Circling Cats C/D visibility ¼ SM. Baro-VNAV NA when using Palmdale altimeter setting.

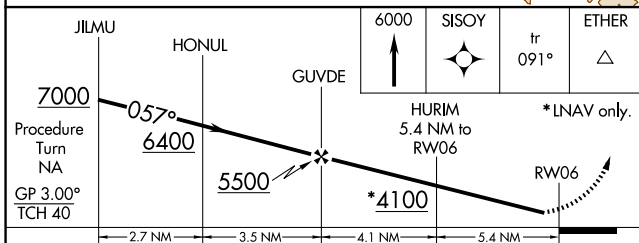
MISSED APPROACH: Climb to 6000 direct SISOY and via 091° track to ETHER and hold.

ATIS <b>126.3</b>	JOSHUA APP CON <b>126.1 290.3</b>	FOX TOWER* <b>118.525 (CTAF) 256.9</b>	GND CON <b>121.7 256.9</b>	UNICOM <b>122.95</b>
----------------------	--------------------------------------	---	-------------------------------	-------------------------



SW-3, 17 APR 2025 to 15 MAY 2025

SW-3, 17 APR 2025 to 15 MAY 2025



CATEGORY	A	B	C	D
LPV DA	2601-1		250 (300-1)	
LNAV/VNAV DA	2649-1		298 (300-1)	
LNAV MDA	2940-1 589 (600-1)		2940-1½ 589 (600-1½)	2940-1¾ 589 (600-1¾)
CIRCLING	2940-1 589 (600-1)		3120-2¼ 769 (800-2¼)	3120-2½ 769 (800-2½)

ELEV 2351	TDZE 2351
-----------	-----------