

# HI-TACAN Z RWY 14L

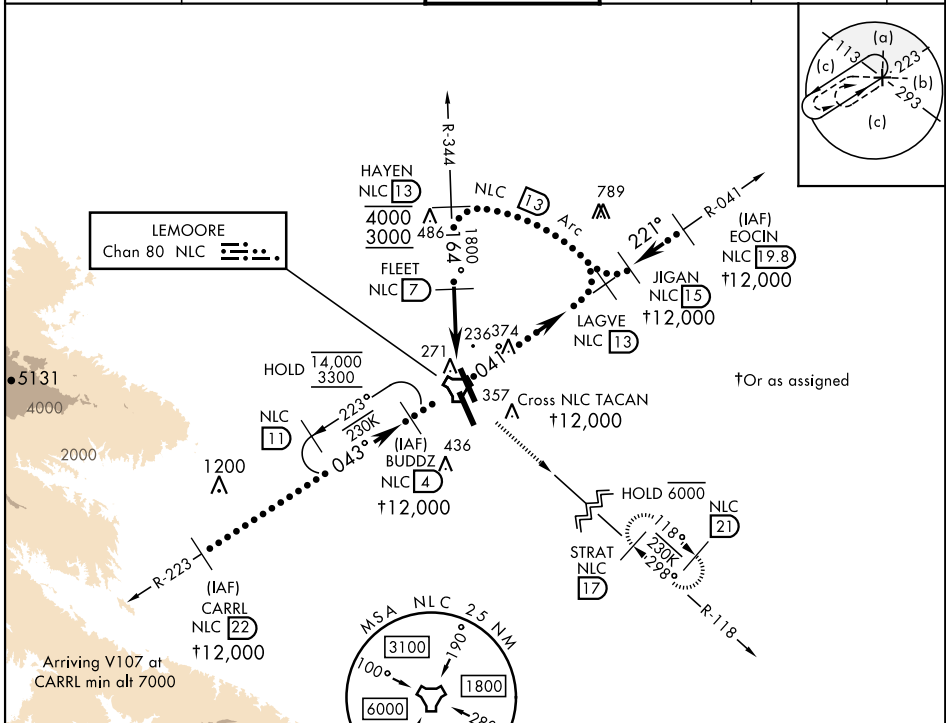
TACAN NLC Chan <b>80</b>	APCH CRS <b>164°</b>	Rwy Idg <b>13,502</b> TDZE <b>219</b> Arprt Elev <b>228</b>
-----------------------------	-------------------------	---

[USN]

LEMOORE NAS (REEVES FIELD) (KNLC)

**MISSED APPROACH:** Climb to 700 then climbing left turn to 2000 via heading 142°, intercept NLC R-118 to STRAT and hold.

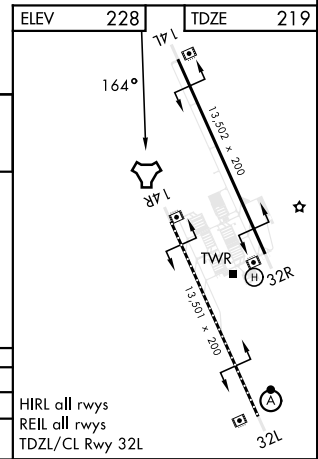
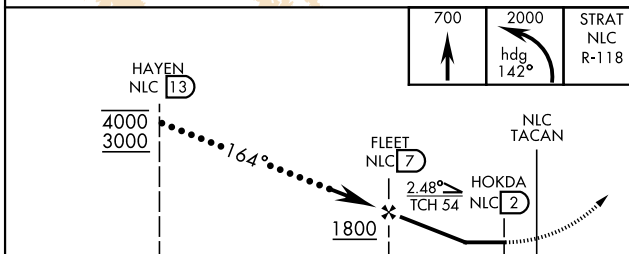
ATIS★ <b>121.575 327.15</b>	APP CON <b>124.1 269.025 (N)</b> <b>118.15 269.025 (S)</b>	TOWER★ <b>128.3 340.2</b>	GND CON <b>121.65 305.2</b>	CLNC DEL <b>124.1 371.9</b>	ASR/ PAR
--------------------------------	--	------------------------------	--------------------------------	--------------------------------	-------------



SW-2, 17 APR 2025 to 15 MAY 2025

SW-2, 17 APR 2025 to 15 MAY 2025

EMERG SAFE ALT 100 NM 16,500



CATEGORY	C	D	E
S-14L	560-1	341	(400-1)
<b>CIRCLING</b>	700-1½ 452 (500-1½)	780-2	552 (600-2)

HIRL all rwys  
REIL all rwys  
TDZL/CL Rwy 32L

# HI-TACAN Z RWY 14L