

RNAV (GPS) RWY 14L

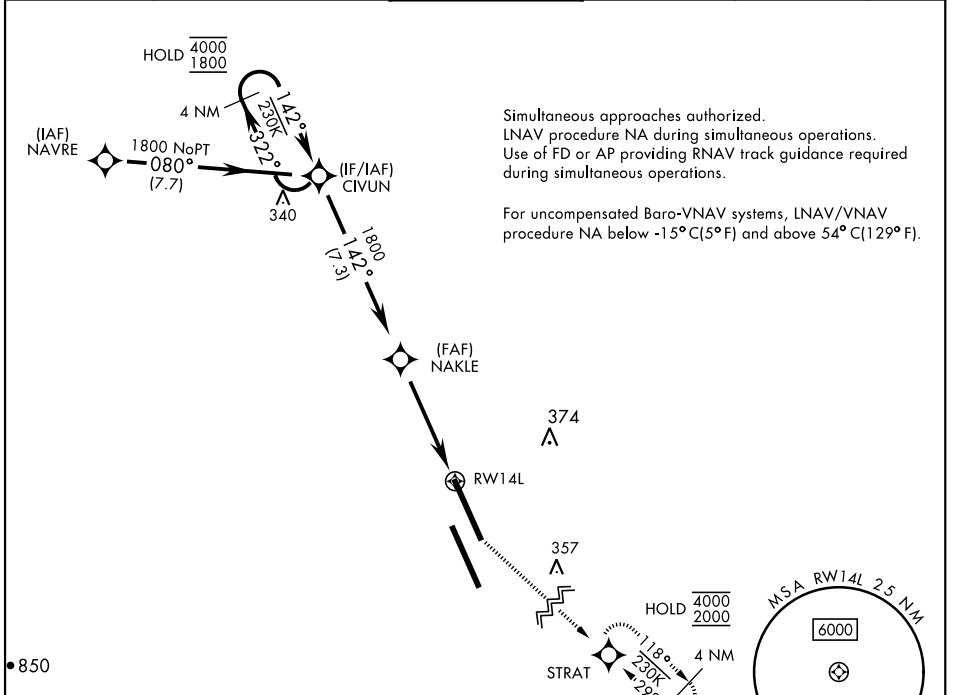
WAAS Chan 70209 W14A	APCH CRS 142°	Rwy Idg 13,502 TDZE 219 Arprt Elev 228
--	-------------------------	---

[USN]

LEMOORE NAS (REEVES FIELD) (KNLC)

DME/DME RNP-0.3 NA		MISSED APPROACH: Climb to 1200, then climb left turn to 2000 direct STRAT and hold.			
--------------------	--	---	--	--	--

ATIS ★ 121.575 327.15	APP CON 124.1 269.025 (N) 118.15 269.025 (S)	TOWER ★ 128.3 340.2	GND CON 121.65 305.2	CLNC DEL 124.1 371.9	ASR/PAR
---------------------------------	--	-------------------------------	--------------------------------	--------------------------------	---------



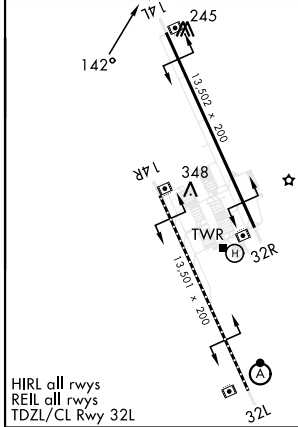
Simultaneous approaches authorized.
 LNAV procedure NA during simultaneous operations.
 Use of FD or AP providing RNAV track guidance required during simultaneous operations.
 For uncompensated Baro-VNAV systems, LNAV/VNAV procedure NA below -15°C (5°F) and above 54°C (129°F).

SW-2, 17 APR 2025 to 15 MAY 2025

SW-2, 17 APR 2025 to 15 MAY 2025

EMERG SAFE ALT 100 NM 16,500

ELEV	228	TDZE	219
------	-----	------	-----



4 NM Holding Pattern	CIVUN	NAKLE	1200	2000	STRAT
	4000 1800	322° 142°	142°	1800	0.8 NM to RWY 14L
GP 3.00° TCH 54	4.8 NM		RWY 14L		
CATEGORY	A	B	C	D	
LPV DA	419-3/4	200	(200-3/4)		
LNAV/VNAV DA	469-3/4	250	(300-3/4)		
LNAV MDA	520-1	301	(300-1)		
C CIRCLING	680-1	452 (500-1)	700-1 1/2 472 (500-1 1/2)	780-2 552 (600-2)	

RNAV (GPS) RWY 14L