

RNAV (GPS) RWY 14R

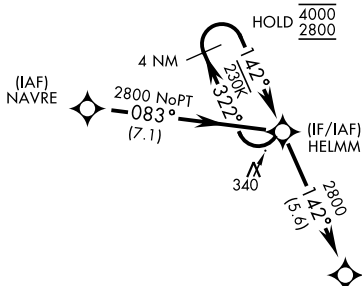
WAAS Chan 80286 W14B	APCH CRS 142°	Rwy Idg 13,501 TDZE 228 Arpt Elev 228
------------------------------------------	-------------------------	------------------------------------------------------------------

[USN]

LEMOORE NAS (REEVES FIELD) (KNLC)

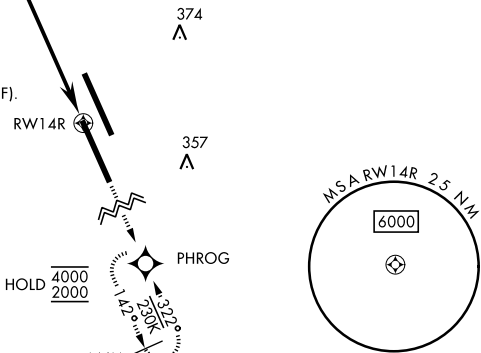
▽ DME/DME RNP-0.3 NA	MISSED APPROACH: Climb to 1200, then climbing right turn to 2000 direct PHROG and hold.
-----------------------------	-----------------------------------------------------------------------------------------

ATIS ★ 121.575 327.15	APP CON 124.1 269.025 (N) 118.15 269.025 (S)	TOWER ★ 128.3 360.2	GND CON 121.65 305.2	CLNC DEL 124.1 371.9	ASR/PAR
---------------------------------	------------------------------------------------------------------	-------------------------------	--------------------------------	--------------------------------	---------



Simultaneous approaches authorized.
LNAV procedure NA during simultaneous operations.
Use of FD or AP providing RNAV track guidance required during simultaneous operations.

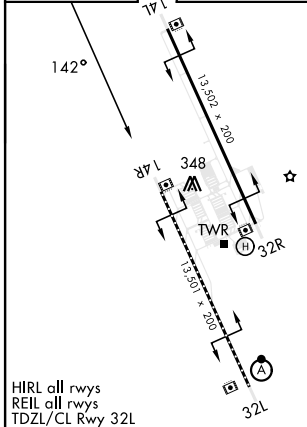
For uncompensated Baro-VNAV systems, LNAV/VNAV procedure NA below -15°C (5°F) and above 54°C (129°F).



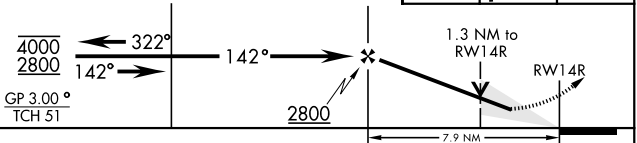
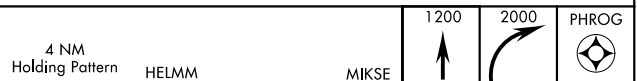
1660

EMERG SAFE ALT 100 NM 16,500

ELEV	228	TDZE	228
------	-----	------	-----



HIRL all rwys
REIL all rwys
TDZL/CL Rwy 32L



CATEGORY	A	B	C	D
LPV DA		428-¾	200 (200-¾)	
LNAV/VNAV DA		483-¾	255 (300-¾)	
LNAV MDA	680-1	452 (500-1)	680-1¾	452 (500-1¾)
C CIRCLING	680-1	452 (500-1)	700-1½	780-2
			472 (500-1½)	552 (600-2)

RNAV (GPS) RWY 14R

SW-2, 17 APR 2025 to 15 MAY 2025

SW-2, 17 APR 2025 to 15 MAY 2025