

REEVES-FOUR DEPARTURE (REVES4.NLC)

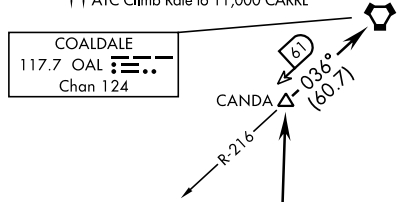
LEMOORE NAS (REEVES FIELD) (KNLC)

[USN] LEMOORE, CALIFORNIA

ATIS ★ 121.575 327.15
 CLNC DEL
 124.1 371.9
 GND CON
 121.65 305.2
 TOWER ★
 128.3 340.2
 (Rwy 14L, 32L)
 128.3 360.2
 (Rwy 14R, 32R)
 DEP CON
 124.1 318.8 (N)
 118.15 318.8 (S)

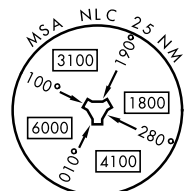
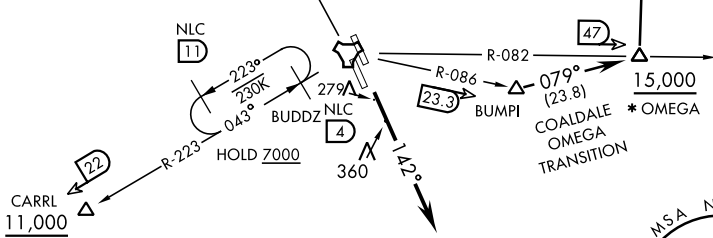
Rwy	Knots	60	120	180	240	300	360
†14L/R	V/V(fpm)	320	640	960	1280	1600	1920
††14L/R	V/V(fpm)	364	728	1092	1456	1820	2184

† ATC Climb Rate to 15,000 OMEGA
 †† ATC Climb Rate to 11,000 CARRL



LEMOORE
 Chan 80 NLC

* Local military use only for Special Use Airspace entry.



EMERG SAFE ALT 100 NM 16,500

NOTE: Chart not to scale

DEPARTURE ROUTE DESCRIPTION

TAKEOFF RUNWAY 14L/14R: Climb to 2000 via heading 142° then radar vectors to join assigned transition or route.

CARRL TRANSITION (REVES4.CARRL): From over CARRL thence as filed. Cross CARRL at or above 11,000.

COALDALE TRANSITION (REVES4.OAL): From over BUMPI direct OMEGA, direct CANDA, direct COALDALE VORTAC. Cross OMEGA at or above 15,000.

OMEGA TRANSITION (REVES4.OMEGA): From over BUMPI direct OMEGA thence as filed.

LOST COMMUNICATIONS: If no transmissions are received within 8 DME of NLC TACAN, fly departure heading to intercept NLC 10 DME arc, arc to respective departure radial then via departure radial to assigned departure fix. Then via assigned route. Once established on departure radial climb to filed altitude.

REEVES-FOUR DEPARTURE (REVES4.NLC)

Amdt 2 17JUN21

LEMOORE, CALIFORNIA

LEMOORE NAS (REEVES FIELD) (KNLC)

SW-2, 17 APR 2025 to 15 MAY 2025

SW-2, 17 APR 2025 to 15 MAY 2025