

LEMOORE, CALIFORNIA

TACAN Y RWY 14R

LEMOORE NAS (REEVES FIELD) (KNLC)

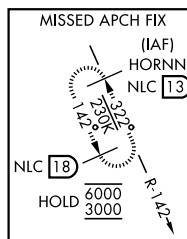
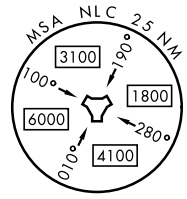
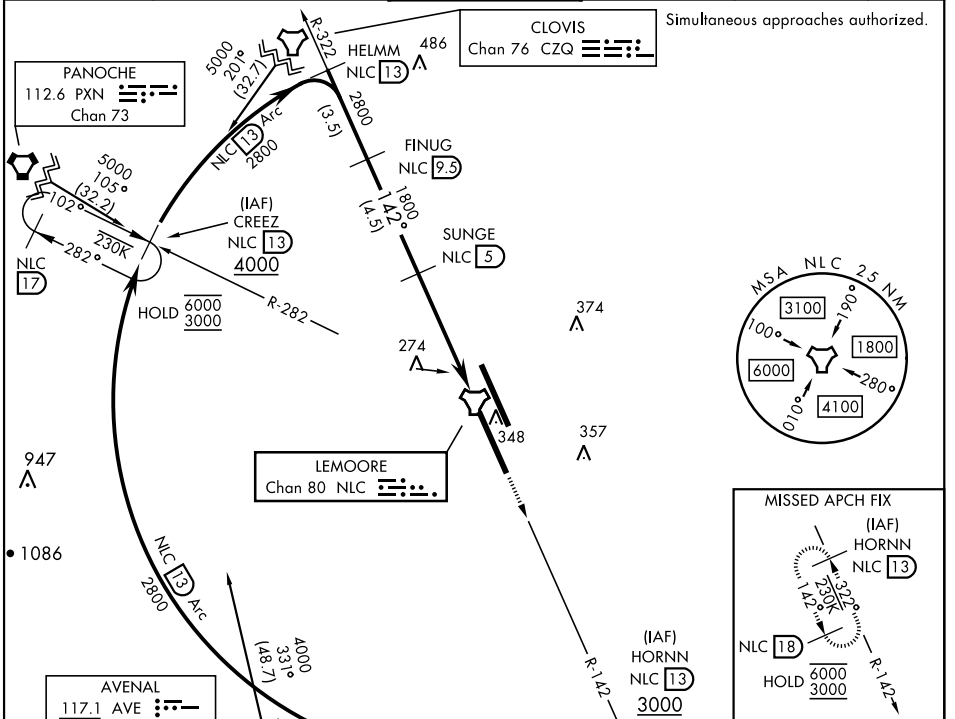
TACAN NLC Chan 80	APCH CRS 142°	Rwy Idg 13,501 TDZE 228 Arprt Elev 228
-----------------------------	-------------------------	---

[USN]

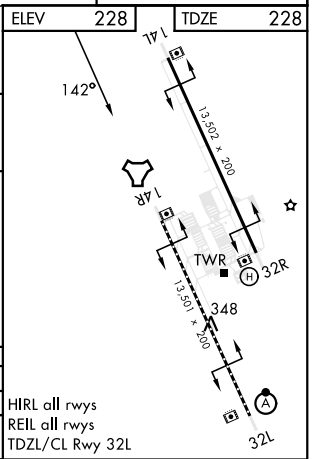
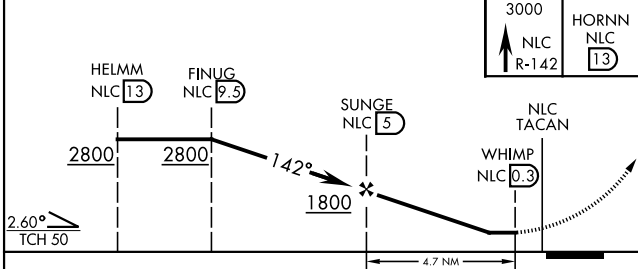
MISSED APPROACH: Climb to 3000 via R-142 to HORNN and hold.

ATIS★ 121.575 327.15	APP CON 124.1 269.025 (N) 118.15 269.025 (S)	TOWER★ 128.3 360.2	GND CON 121.65 305.2	CLNC DEL 124.1 371.9	ASR/PAR
--------------------------------	--	------------------------------	--------------------------------	--------------------------------	---------

Simultaneous approaches authorized.



ELEV	228	TDZE	228
------	-----	------	-----



CATEGORY	A	B	C	D
S-14R	560-1	332	(400-1)	
CIRCLING	680-1 452 (500-1)		700-1½ 472 (500-1½)	780-2 552 (600-2)

HIRL all rwys
REIL all rwys
TDZL/CL Rwy 32L

LEMOORE, CALIFORNIA
Amdt 6 19MAY22

36°20'N-119°57'W

LEMOORE NAS (REEVES FIELD) (KNLC)

TACAN Y RWY 14R

SW-2, 17 APR 2025 to 15 MAY 2025

SW-2, 17 APR 2025 to 15 MAY 2025