

TACAN Y RWY 32L

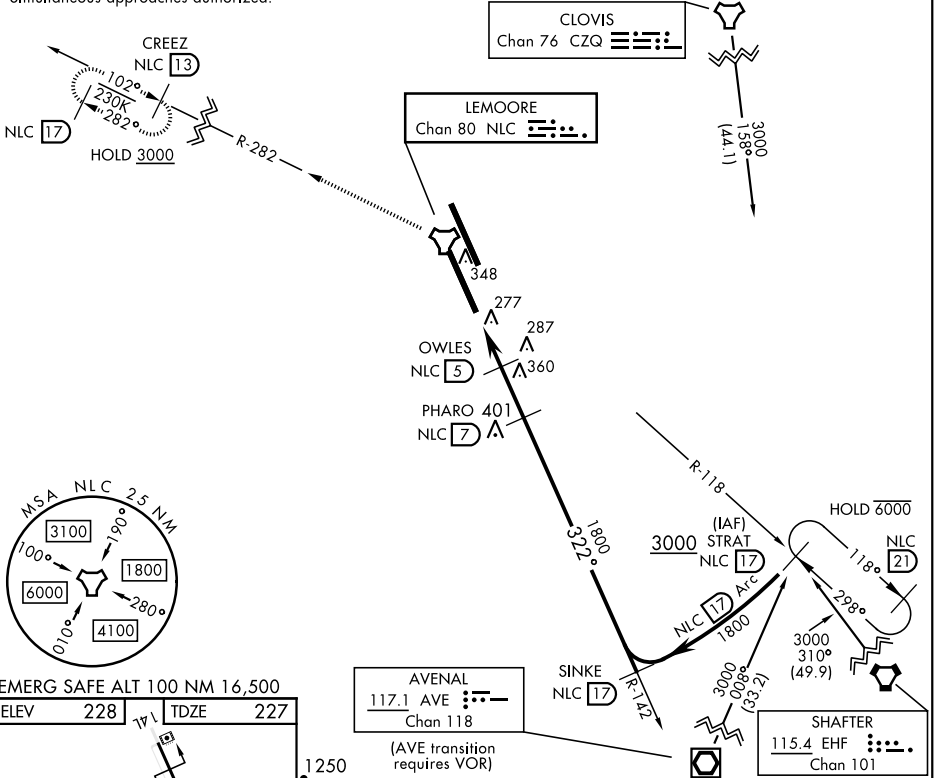
TACAN Chan 80	NLC 322°	APCH CRS 322°	Rwy Idg 13,501	TDZE 227	Arprt Elev 228
-------------------------	--------------------	-------------------------	--------------------------	--------------------	--------------------------

[USN]

LEMOORE NAS (REEVES FIELD) (KNLC)

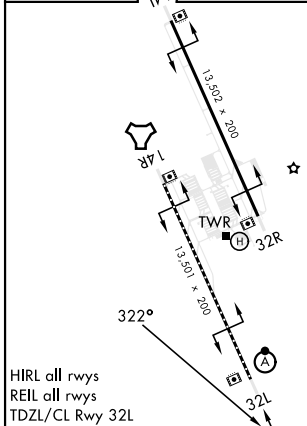
*When ALS inop, increase vis to 1 mile.			ALSF-2 	MISSED APPROACH: Climb to 3000 via R-142 to NLC TACAN, then via R-282 to CREEZ and hold.		
ATIS ★ 121.575 327.15	APP CON 124.1 269.025 (N) 118.15 269.025 (S)	TOWER ★ 128.3 340.2	GND CON 121.65 305.2	CLNC DEL 124.1 371.9	ASR/PAR	

Simultaneous approaches authorized.



EMERG SAFE ALT 100 NM 16,500

ELEV	228	TDZE	227
------	-----	------	-----



HIRL all rwys
 REIL all rwys
 TDZL/CL Rwy 32L

1250	3000	NLC R-142	NLC	NLC R-282
NLC TACAN	PHARO NLC 7	SINKE NLC 17		
SUZIQ NLC 3.4	OWLES NLC 5			
1080	1800	1800		
1.6 NM	2 NM			
CATEGORY	A	B	C	D
S-32L*	580-1/2	353	(400-1/2)	
CIRCLING	680-1 452 (500-1)	700-1 1/2 472 (500-1 1/2)	780-2	552 (600-2)

TACAN Y RWY 32L

SW-2, 17 APR 2025 to 15 MAY 2025

SW-2, 17 APR 2025 to 15 MAY 2025