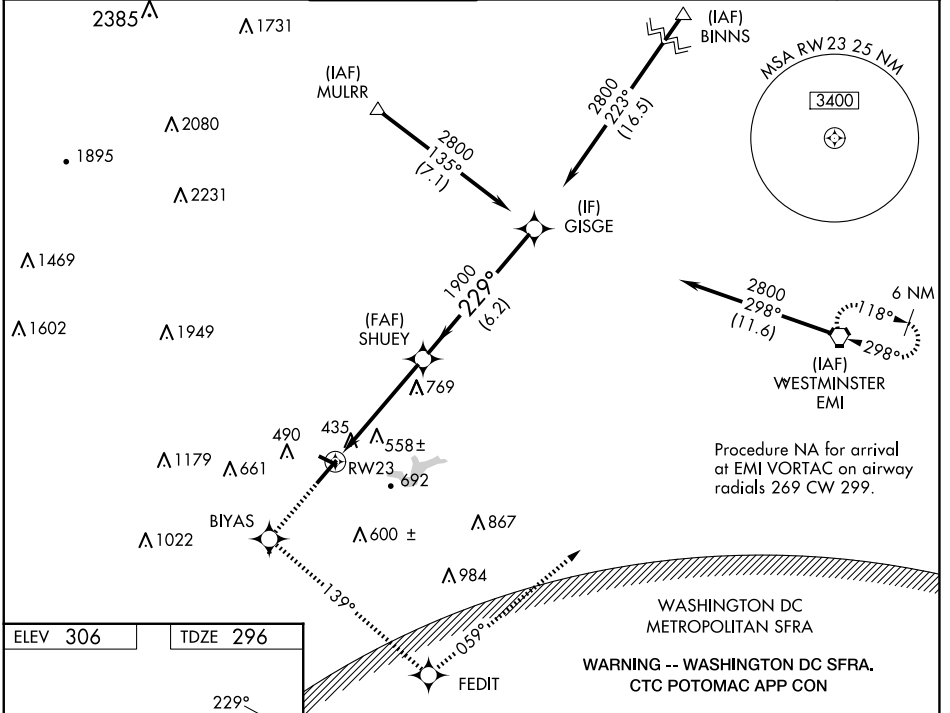


WAAS CH <b>81802</b> <b>W23A</b>	APP CRS <b>229°</b>	Rwy Idg TDZE <b>296</b> Apt Elev <b>306</b>	<b>5819</b>
--	------------------------	---	-------------

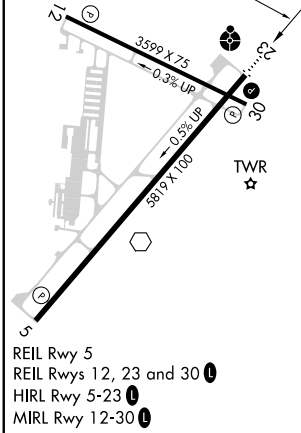
# RNAV (GPS) Z RWY 23

FREDERICK MUNI (FDK)

RNP APCH.				ODALS		MISSED APPROACH: Climb to 3000 direct BIYAS WP and via 139° track to FEDIT WP and via 059° track to EMI VORTAC and hold.	
<p><b>⚠</b> Rwy 23 helicopter visibility reduction below 3/4 SM NA. Circling Rwy 30 NA at night. For uncompensated Baro-VNAV systems, LNAV/VNAV NA below -15°C or above 54°C. Inop table does not apply to LPV, LNAV/VNAV all Cats, and LNAV Cat C.</p>				<p>ATIS <b>124.875</b></p>		<p>POTOMAC APP CON <b>126.1 338.25</b></p>	
<p>FREDERICK TOWER ★ <b>132.4</b> (CTAF) <b>0</b></p>		<p>GND CON <b>127.425</b></p>		<p>CLNC DEL <b>127.425</b></p>		<p>CLNC DEL <b>126.9</b> (When twr closed)</p>	
				<p>UNICOM <b>122.95</b></p>			



ELEV 306	TDZE 296
----------	----------



3000 BIYAS	FEDIT	EMI	VGSi and RNAV glidepath not coincident (VGSi Angle 3.00/TCH 54).
↑	tr 139°	tr 059°	
*LNAV only.		SHUEY	GISGE
*2.2 NM to RWY23		2800	
RWY23		1900	GP 3.00° TCH 50
2.2		2.7 NM	6.2 NM
CATEGORY	A	B	C
LPV DA	690-1½ 394 (400-1½)		
LNAV/VNAV DA	1020-2½ 724 (800-2½)		
LNAV MDA	1020-¾ 724 (800-¾)	1020-2 724 (800-2)	1020-2¼ 724 (800-2¼)
<input checked="" type="checkbox"/> CIRCLING	1020-1 714 (800-1)	1100-2¼ 794 (800-2¼)	1200-2¾ 894 (900-2¾)

NE-3, 17 APR 2025 to 15 MAY 2025

NE-3, 17 APR 2025 to 15 MAY 2025