

WAAS CH <b>82132</b> <b>W17A</b>	APP CRS <b>172°</b>	Rwy Idg TDZE Apt Elev	<b>5800</b> <b>1234</b> <b>1234</b>
--	------------------------	-----------------------------	---

# RNAV (GPS) RWY 17

AUSTIN MUNI (AUM)

RNP APCH.

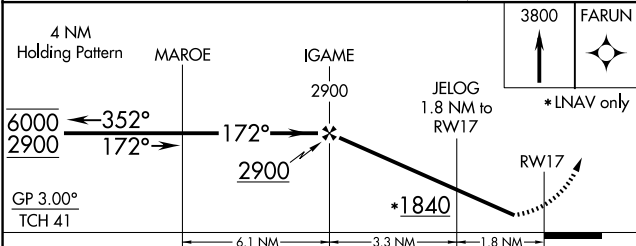
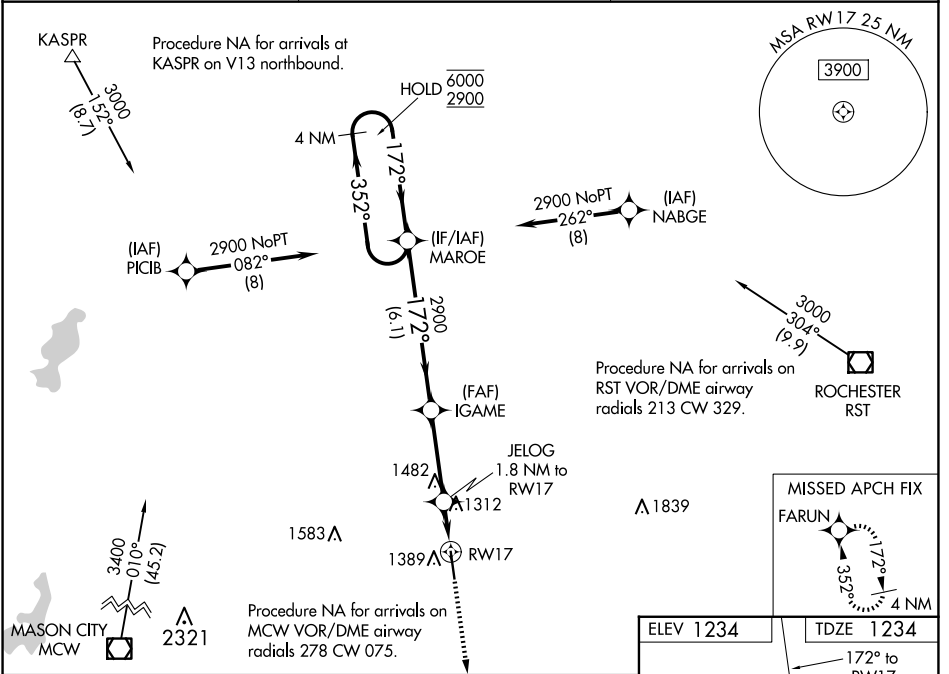
**▼** Rwy 17 helicopter visibility reduction below 3/4 SM NA.  
**▲** For uncompensated Baro-VNAV systems, LNAV/VNAV NA below -17°C or above 54°C.

MISSED APPROACH:  
 Climb to 3800 direct  
 FARUN and hold.

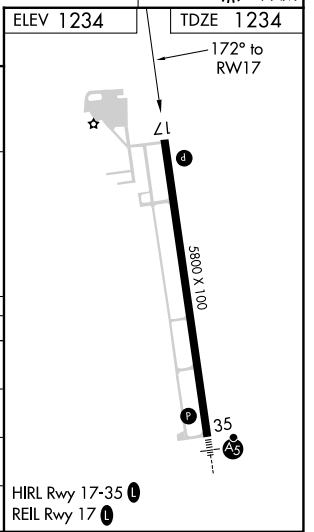
AWOS-3  
**119.025**

ROCHESTER APP CON\*  
**119.8 251.125**

UNICOM  
**122.7** (CTAF) **0**



CATEGORY	A	B	C	D
LPV DA		1484-1	250 (300-1)	
LNAV/VNAV DA		1505-1	271 (300-1)	
LNAV MDA		1580-1	346 (400-1)	
<b>C</b> CIRCLING	1700-1	466 (500-1)	1800-1½ 566 (600-1½)	1880-2 646 (700-2)



NC-1, 17 APR 2025 to 15 MAY 2025

NC-1, 17 APR 2025 to 15 MAY 2025