

LOC I-DLX <b>111.3</b>	APP CRS <b>191°</b>	Rwy Idg <b>11089</b> TDZE <b>272</b> Apt Elev <b>312</b>
---------------------------	------------------------	--

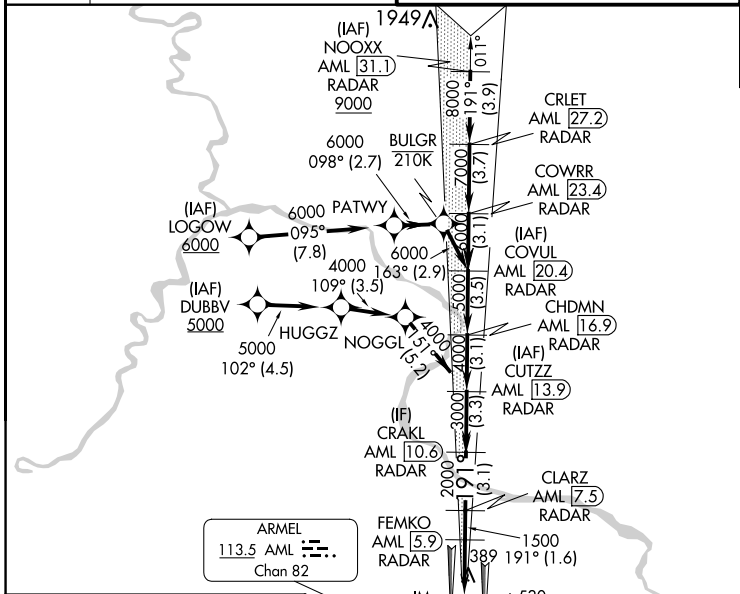
# ILS RWY 19C (CAT II & III)

WASHINGTON DULLES INTL (IAD)

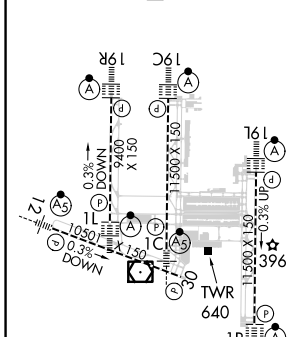
RNP APCH - GPS. RADAR required for procedure entry at NOOXX. DME or RADAR required.	ALSF-2 	MISSED APPROACH: Climb to 3000 direct MOOOV and hold.
<p>Simultaneous approach authorized. DME from AML VOR/DME. DME use requires simultaneous reception of I-DLX and AML DME.</p>		

D-ATIS <b>134.85</b>	POTOMAC APP CON <b>120.45 306.925</b> (241°-330°) <b>128.525 306.925</b> (091°-240°) <b>126.1 338.25</b> (331°-090°)	DULLES TOWER <b>120.1 317.8</b> (Rwy 1R/19L) <b>120.25 348.6</b> (Rwy 1C/19C) <b>134.425 348.6</b> (Rwys 1L/19R and 12/30)	GND CON <b>121.9 317.8</b> (EAST) <b>121.625 348.6</b> (WEST)
-------------------------	---	---	---

CLNC DEL <b>135.7 317.8</b>	CPDLC
--------------------------------	-------



ELEV 312	<b>D</b>	TDZE 272
----------	----------	----------



3000 MOOOV	VGSI and ILS glidepath not coincident (VGSI Angle 3.00/TCH 72).				NOOXX AML 31.1 RADAR			
FEMKO AML 5.9 RADAR	CLARZ AML 7.5 RADAR	CRALK AML 10.6 RADAR	CUTZZ AML 13.9 RADAR	CHDMN AML 16.9 RADAR	COVUL AML 20.4 RADAR	COWRR AML 23.4 RADAR	CRLET AML 27.2 RADAR	NOOXX AML 31.1 RADAR
IM 1500 368	2000 3.1 NM	3000 3.3 NM	4000 3.5 NM	5000 3.1 NM	6000 3.7 NM	7000 3.9 NM	8000 3.9 NM	9000 3.9 NM
1030 3.7 NM	1.6 NM	3.1 NM	3.3 NM	3.1 NM	3.5 NM	3.1 NM	3.7 NM	3.9 NM
CATEGORY	A							
S-ILS 19C	CAT II RA 110/12 100 DA 372							
S-ILS 19C	CAT IIIa RVR 07							
S-ILS 19C	CAT IIIb RVR 06							
S-ILS 19C	CAT IIIc NA							

## CATEGORY II & III ILS - SPECIAL AIRCREW & AIRCRAFT CERTIFICATION REQUIRED