

| | | |
|---|------------------------|--|
| LOC/DME I-SGC 110.1 Chan 38 | APP CRS 191° | Rwy ldg 11500 TDZE 302 Apt Elev 312 |
|---|------------------------|--|

ILS RWY 19L (SA CAT II)

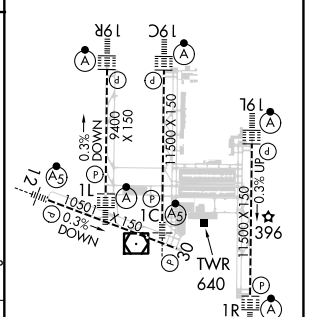
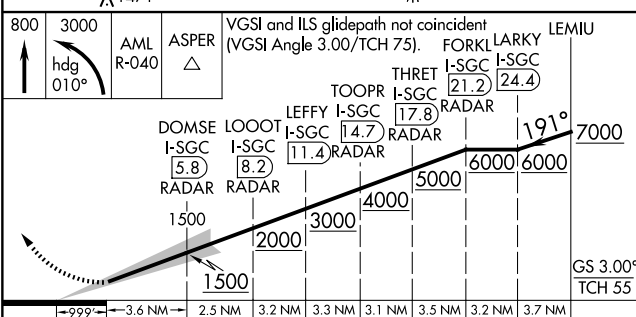
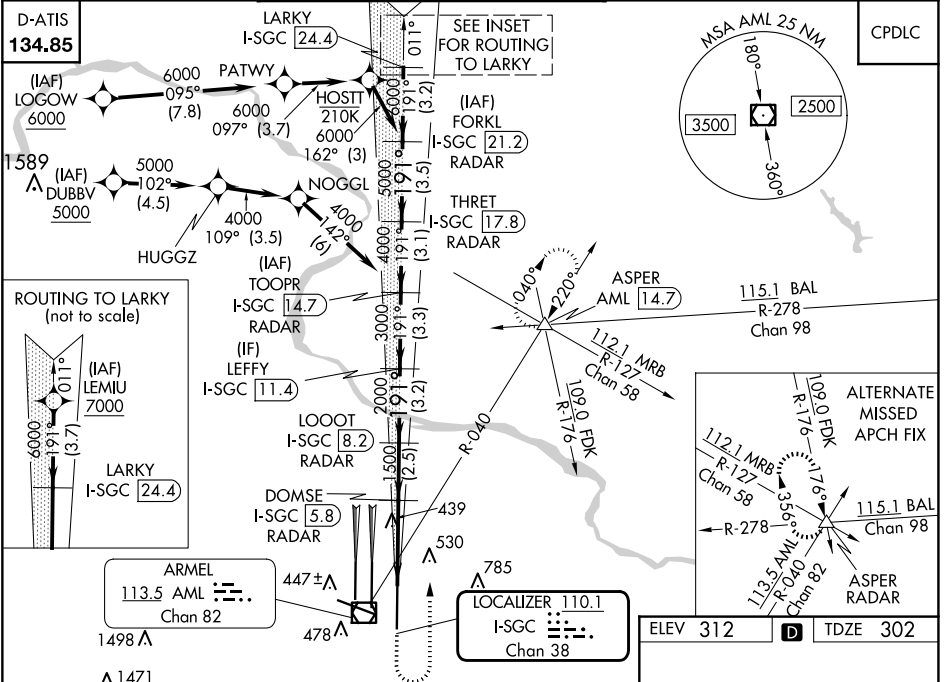
WASHINGTON DULLES INTL (IAD)

RNP APCH - GPS. From LOGOW, or DUBBV, or LEMIU.
DME or RADAR required. RADAR required for procedure entry at LEMIU.
Simultaneous approach authorized.
Requires specific OPSPEC, MSP/EC, or LOA approval.



MISSED APPROACH: Climb to 800 then climbing left turn to 3000 on heading 010° and on AML VOR/DME R-040 to ASPER INT/AML 14.7 DME and hold.

| | | | | | |
|-----------------|----------------------------|----------------|--------------------------------------|-----------------------------|--------------------|
| POTOMAC APP CON | | DULLES TOWER | | GND CON | CLNC DEL |
| 120.45 | 306.925 (241°-330°) | 120.1 | 317.8 (Rwys 1R/19L) | 121.9 317.8 (EAST) | 135.7 317.8 |
| 128.525 | 306.925 (091°-240°) | 120.25 | 348.6 (Rwy 1C/19C) | 121.625 348.6 (WEST) | |
| 126.1 | 338.25 (331°-090°) | 134.425 | 348.6 (Rwys 1L/19R and 12/30) | | |



| | | | | |
|-----------|----------------------|---|---|---|
| CATEGORY | A | B | C | D |
| S-ILS 19L | RA 100/12 100 DA 402 | | | |

SA CATEGORY II ILS - SPECIAL AIRCREW & AIRCRAFT CERTIFICATION REQUIRED

TDZ/CL Rwys 1C, 1L, 1R, 12, 19C and 19R
REIL Rwy 30
HIRL all Rwys

NE-3, 17 APR 2025 to 15 MAY 2025

NE-3, 17 APR 2025 to 15 MAY 2025