

LOC/DME I-SGC 110.1 Chan 38	APP CRS 191°	Rwy ldg 11500 TDZE 302 Apt Elev 312
-------------------------------------------------	------------------------	----------------------------------------------------------------

ILS or LOC RWY 19L

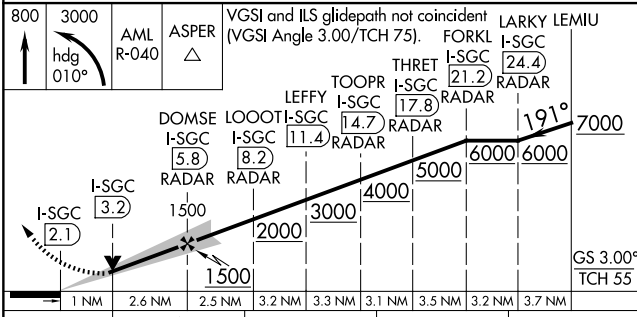
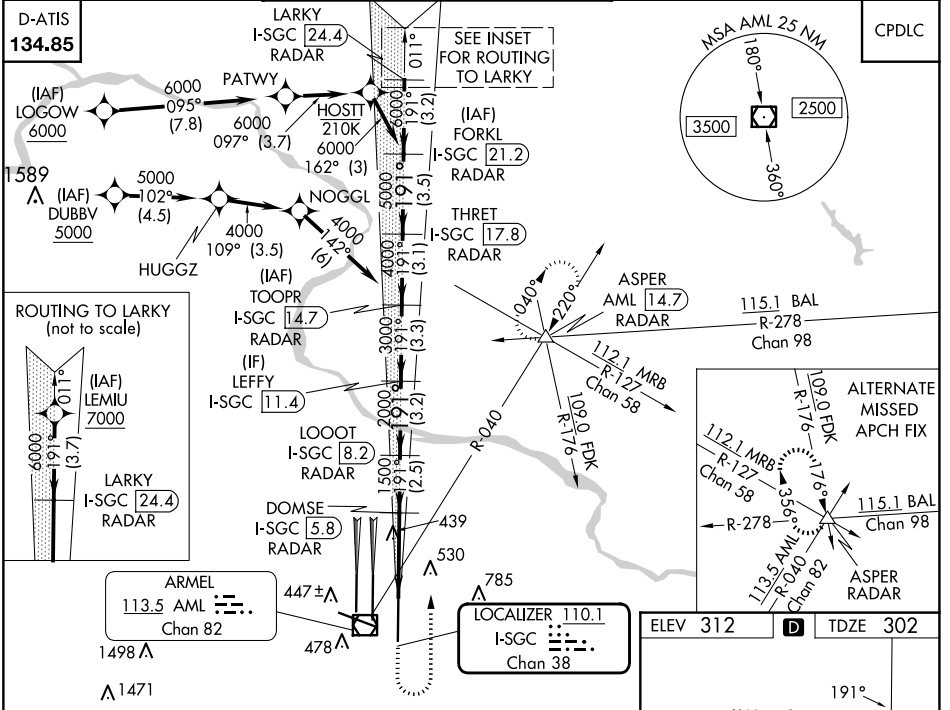
WASHINGTON DULLES INTL (IAD)

RNP APCH - GPS. From LOGOV, or DUBBV, or LEMIU.
DME or RADAR required. RADAR required for procedure entry at LEMIU.
Simultaneous approach authorized.
*RVR 1800 authorized with use of FD or AP or HUD to DA.

ALSF-2
A

MISSED APPROACH: Climb to 800 then climbing left turn to 3000 on heading 010° and on AML VOR/DME R-040 to ASPER INT/AML 14.7 DME and hold.

POTOMAC APP CON 120.45 306.925 (241°-330°) 128.525 306.925 (091°-240°) 126.1 338.25 (331°-090°)	DULLES TOWER 120.1 317.8 (Rwy 1R/19L) 120.25 348.6 (Rwy 1C/19C) 134.425 348.6 (Rwys 1L/19R and 12/30)	GND CON 121.9 317.8 (EAST) 121.625 348.6 (WEST)	CLNC DEL 135.7 317.8
-------------------------------------------------------------------------------------------------------------------------------	-------------------------------------------------------------------------------------------------------------------------------------	---------------------------------------------------------------------	--------------------------------



ELEV 312	TDZE 302
TDZ/CL Rwys 1C, 1L, 1R, 12, 19C and 19R REL Rwy 30 HIRL all Rwys	
FAF to MAP 3.6 NM	
Knots	60 90 120 150 180
Min:Sec	3:36 2:24 1:48 1:26 1:12

CATEGORY	A	B	C	D
S-ILS 19L *	502/24 200 (200-½)			
S-LOC 19L	700/24 398 (400-½)	700/35 398 (400-¾)		

NE-3, 17 APR 2025 to 15 MAY 2025

NE-3, 17 APR 2025 to 15 MAY 2025