

LOC/DME I-HSU 110.75 Chan 44 (Y)	APP CRS 191°	Rwy ldg 9400 TDZE 278 Apt Elev 312
--	------------------------	--

ILS or LOC RWY 19R

WASHINGTON DULLES INTL (IAD)

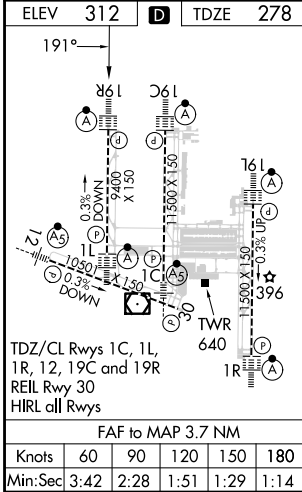
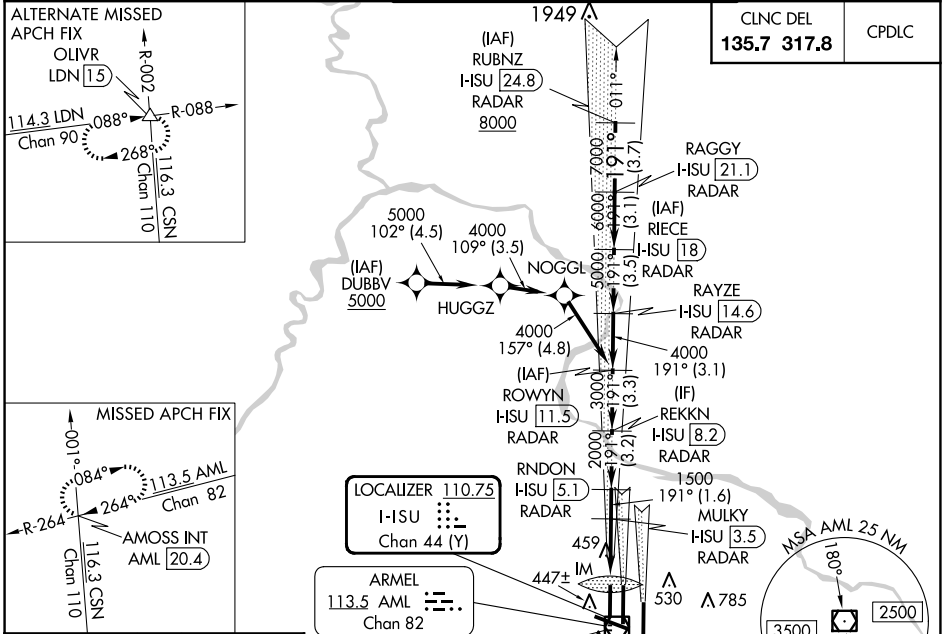
RNP APCH-GPS. From DUBBV.
DME or RADAR required. RADAR required for procedure entry at RUBNZ.

Simultaneous approach authorized.

ALSF-2

MISSED APPROACH: Climb to 800 then climbing right turn to 3000 on heading 280° and AML VOR/DME R-264 to AMOSS INT/AML 20.4 DME and hold.

D-ATIS 134.85	POTOMAC APP CON 120.45 306.925 (241°-330°) 128.525 306.925 (091°-240°) 126.1 338.25 (331°-090°)	DULLES TOWER 120.1 317.8 (Rwys 1R/19L) 120.25 348.6 (Rwys 1C/19C) 134.425 348.6 (Rwys 1L/19R and 12/30)	GND CON 121.9 317.8 (EAST) 121.625 348.6 (WEST)
-------------------------	---	---	---



ELEV 312	D	TDZE 278
191°	1498 A	1471
800	3000	1500
AML R-264	AMOSS INT	
REKKN I-HSU 8.2	RAYZE I-HSU 14.6	RAGGY I-HSU 21.1
ROWYNN I-HSU 11.5	RIECE I-HSU 18	RUBNZ I-HSU 24.8
RNDON I-HSU 5.1		8000
MULKY I-HSU 3.5		
I-HSU DME ANTENNA		
I-HSU 0.2	1500	2000 3000 4000 5000 6000 7000
I-HSU 1		
GS 3.00°		TCH 55
VGSI and ILS glidepath not coincident (VGSI Angle 3.00/TCH 70).		
0.1 1.1	2.5 -1.6 NM	3.2 3.3 3.1 3.5 3.1 3.7
CATEGORY	A	B C D
S-ILS 19R	478/18	200 (200-1/2)
S-LOC 19R	720/24	442 (500-1/2) 720/45 442 (500-3/8)
CIRCLING	940-1	628 (700-1) 940-1 3/4 1180-2 3/4 868 (900-2 3/4)

NE-3, 17 APR 2025 to 15 MAY 2025

NE-3, 17 APR 2025 to 15 MAY 2025