

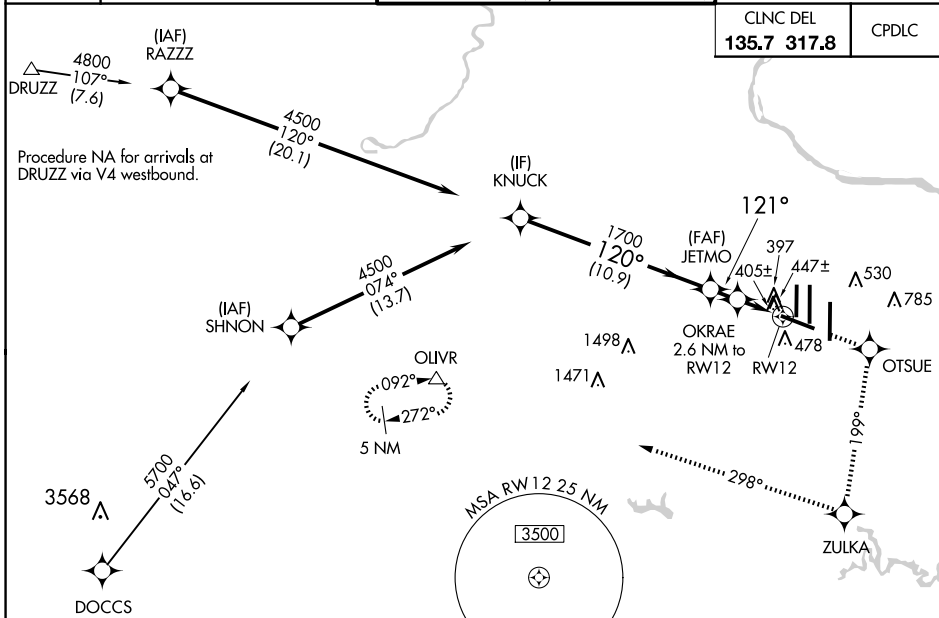
WAAS CH 86310 W12A	APP CRS 121°	Rwy Idg 10501 TDZE 310 Apt Elev 312
--	------------------------	--

RNAV (GPS) RWY 12

WASHINGTON DULLES INTL (IAD)

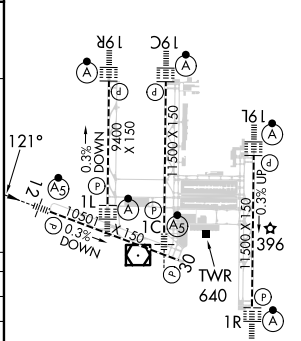
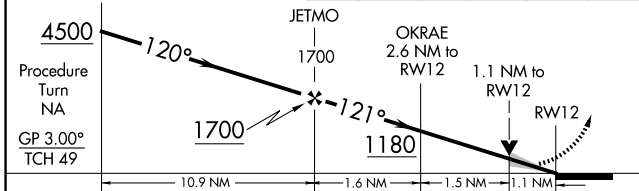
RNP APCH - GPS.		MALSR	MISSED APPROACH: Climb to 5000 direct OTSUE and on track 199° to ZULKA and right turn on track 298° to OLIVR and hold.
▼ For inop ALS, increase LNAV Cats C/D visibility to RVR 6000. ▲ For uncompensated Baro-VNAV systems, LNAV/VNAV NA below -15°C or above 48°C.			

D-ATIS 134.85	POTOMAC APP CON 120.45 306.925 (241°-330°) 128.525 306.925 (091°-240°) 126.1 338.25 (331°-090°)	DULLES TOWER 120.1 317.8 (Rwy 1R/19L) 120.25 348.6 (Rwy 1C/19C) 134.425 348.6 (Rwys 1L/19R and 12/30)	GND CON 121.9 317.8 (EAST) 121.625 348.6 (WEST)
-------------------------	---	---	---



ELEV 312	D	TDZE 310
----------	----------	----------

VGSI and RNAV glidepath not coincident (VGSI Angle 3.00/TCH 66).	5000	OTSUE	ZULKA	OLIVR
		tr 199°	tr 298°	



CATEGORY	A	B	C	D
LPV DA		510/18	200 (200-½)	
LNAV/VNAV DA		737/50	427 (500-1)	
LNAV MDA	720/24	410 (500-½)	720/40	410 (500-¾)
CIRCLING	940-1	628 (700-1)	940-1¾ 628 (700-1¾)	1180-2¾ 868 (900-2¾)

TDZ/CL Rwys 1C, 1L, 1R, 12, 19C and 19R
REL Rwy 30
HIRL all Rwys

NE-3, 17 APR 2025 to 15 MAY 2025

NE-3, 17 APR 2025 to 15 MAY 2025