

APP CRS	Rwy ldg	11089
191°	TDZE	272
	Apt Elev	312

RNAV (RNP) Z RWY 19C

WASHINGTON DULLES INTL (IAD)

RNP AR APCH - GPS.

▼ For uncompensated Baro-VNAV systems, procedure NA below -13°C or above 54°C. Simultaneous approach authorized. For inop ALS, increase RNP 0.11 visibility all Cats to RVR 4500, and RNP 0.25 visibility all Cats to RVR 5500.

ALSF-2



MISSED APPROACH: Climb to 3000 direct MOOOV and hold.

POTOMAC APP CON

120.45	306.925	(241°-330°)
128.525	306.925	(091°-240°)
126.1	338.25	(331°-090°)

DULLES TOWER

120.1	317.8	(Rwys 1R/19L)
120.25	348.6	(Rwys 1C/19C)
134.425	348.6	(Rwys 1L/19R and 12/30)

GND CON

121.9	317.8	(EAST)
121.625	348.6	(WEST)

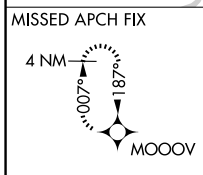
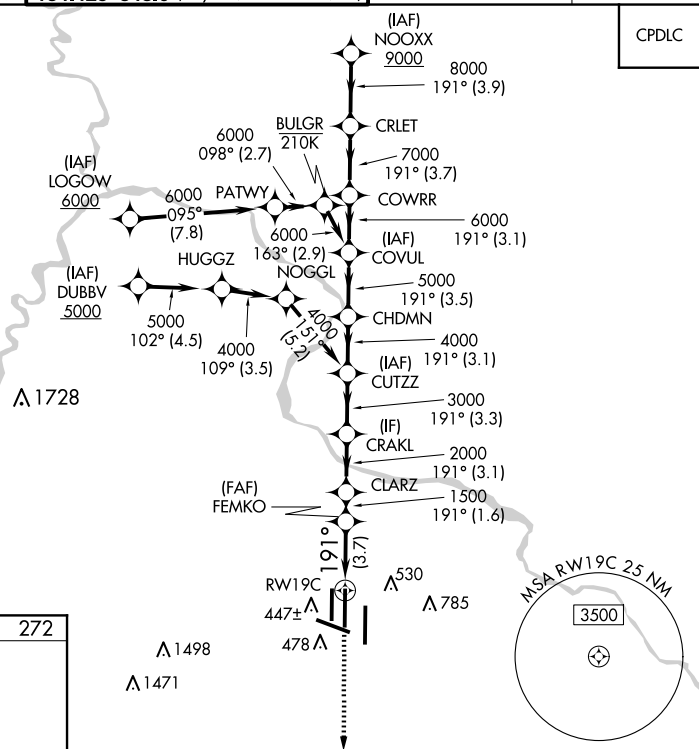
CLNC DEL

135.7	317.8
--------------	--------------

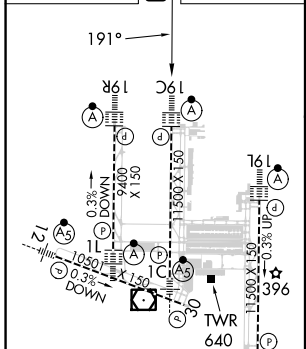
D-ATIS

134.85

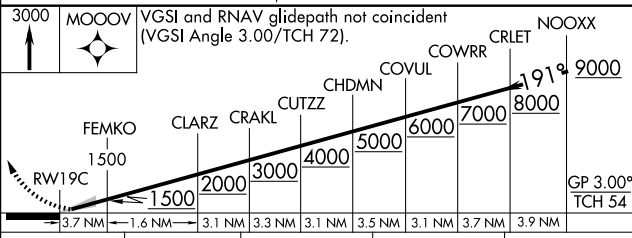
CPDLC



ELEV	312	D	TDZE	272
------	------------	----------	------	------------



TDZ/CL Rwys 1C, 1L, 1R, 12, 19C and 19R
REIL Rwy 30
HIRL all Rwys



CATEGORY	A	B	C	D
RNP 0.11 DA		554/24	282 (300-½)	
RNP 0.25 DA		624/30	352 (400-¾)	
RNP 0.30 DA		702/40	430 (400-¾)	

AUTHORIZATION REQUIRED