

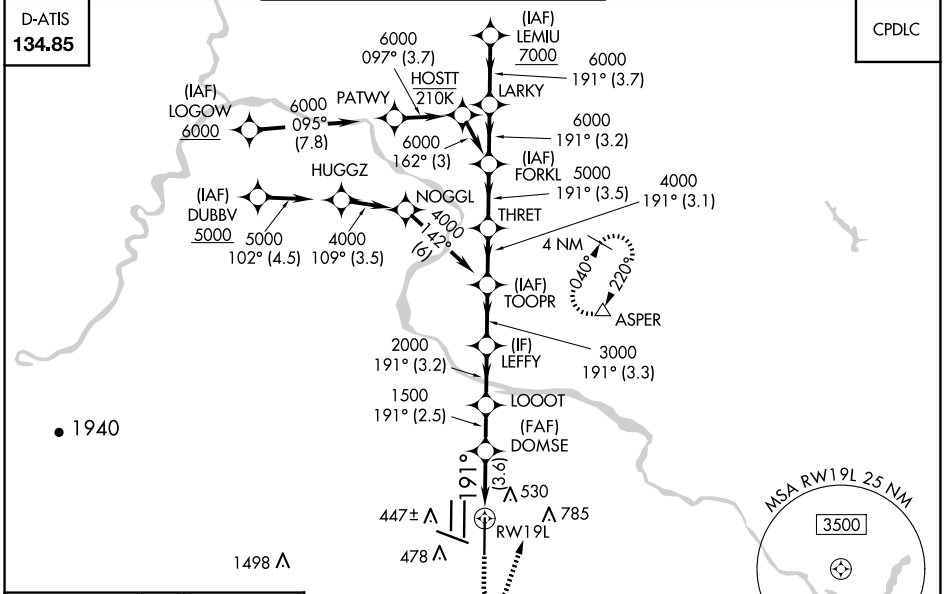
APP CRS	Rwy Idg	<b>11500</b>
<b>191°</b>	TDZE	<b>302</b>
	Apt Elev	<b>312</b>

# RNAV (RNP) Z RWY 19L

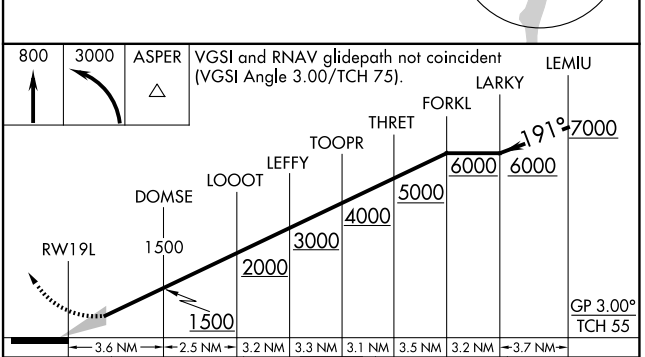
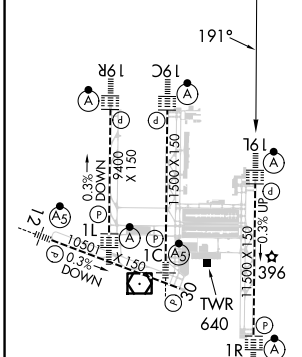
WASHINGTON DULLES INTL (IAD)

RNP AR APCH - GPS.	ALSF-2	MISSED APPROACH: Climb to 800 then climbing left turn to 3000 direct ASPER and hold.
▼ For uncompensated Baro-VNAV systems, procedure NA below -13°C or above 54°C. Simultaneous approach authorized. For inop ALS, increase RNP 0.11 all Cats visibility to RVR 4500.		

POTOMAC APP CON <b>120.45 306.925</b> (241°-330°) <b>128.525 306.925</b> (091°-240°) <b>126.1 338.25</b> (331°-090°)	DULLES TOWER <b>120.1 317.8</b> (Rwys 1R/19L) <b>120.25 348.6</b> (Rwys 1C/19C) <b>134.425 348.6</b> (Rwys 1L/19R and 12/30)	GND CON <b>121.9 317.8</b> (EAST) <b>121.625 348.6</b> (WEST)	CLNC DEL <b>135.7 317.8</b>
---	---	---	--------------------------------



ELEV 312	<b>D</b>	TDZE 302
----------	----------	----------



TDZ/CL Rwys 1C, 1L, 1R, 12, 19C and 19R						
REIL Rwy 30						
HIRL All Rwys						
<b>AUTHORIZATION REQUIRED</b>						

NE-3, 17 APR 2025 to 15 MAY 2025

NE-3, 17 APR 2025 to 15 MAY 2025