

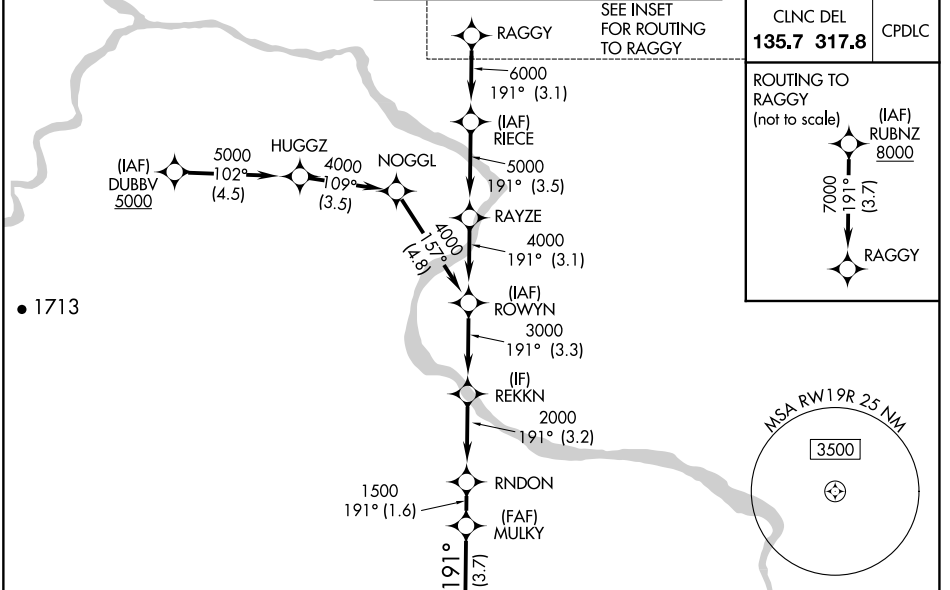
RNAV (RNP) Z RWY 19R

WASHINGTON DULLES INTL (IAD)

APP CRS	Rwy Idg	9400
191°	TDZE	278
	Apt Elev	312

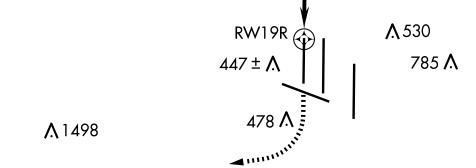
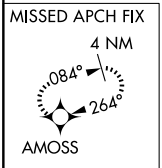
RNP AR APCH - GPS.	ALSIF-2	MISSED APPROACH: Climb to 800 then climbing right turn to 3000 direct AMOSS and hold.
<p>▼ For uncompensated Baro-VNAV systems, procedure NA below -13°C or above 54°C. Simultaneous approach authorized. For inop ALS, increase RNP 0.30 visibility all Cats to RVR 5500.</p>		

D-ATIS	POTOMAC APP CON	DULLES TOWER	GND CON
134.85	120.45 306.925 (241°-330°)	120.1 317.8 (Rwy 1R/19L)	121.9 317.8 (EAST)
	128.525 306.925 (091°-240°)	120.25 348.6 (Rwy 1C/19C)	121.625 348.6 (WEST)
	126.1 338.25 (331°-090°)	134.425 348.6 (Rwy 1L/19R and 12/30)	



NE-3, 17 APR 2025 to 15 MAY 2025

NE-3, 17 APR 2025 to 15 MAY 2025



ELEV	312	TDZE	278
------	-----	------	-----

800	3000	AMOSS	VGSI and RNAV glidepath not coincident (VGSI Angle 3.00/TCH 70).					RAGGY	RUBNZ
CATEGORY	A		B			C		D	
RNP 0.10 DA	608/26		330 (300-½)						
RNP 0.30 DA	658/35		380 (400-¾)						
AUTHORIZATION REQUIRED									

