

APP CRS	Rwy Idg	11500
011°	TDZE	286
	Apt Elev	312


RNAV (RNP) Z RWY 1C

WASHINGTON DULLES INTL (IAD)

RNP AR APCH - GPS. Authorization required.

Simultaneous approach authorized. For uncompensated Baro-VNAV systems, procedure NA below -13°C or above 54°C. For inop ALS, increase RNP 0.11 all Cats visibility to RVR 4000.

MALSR

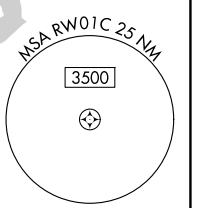
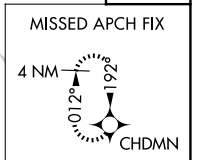
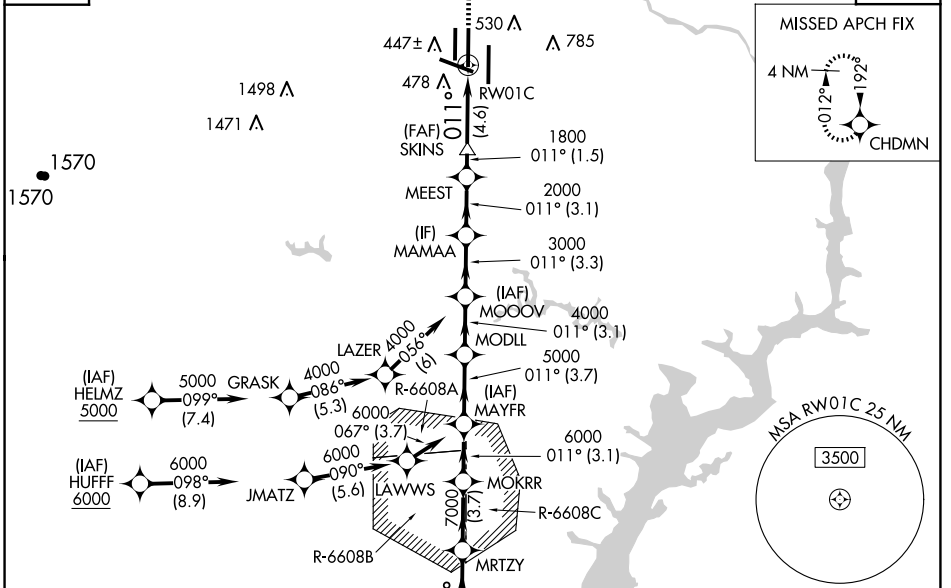


MISSED APPROACH: Climb to 4000 direct CHDMN and hold, continue climb-in-hold to 4000.

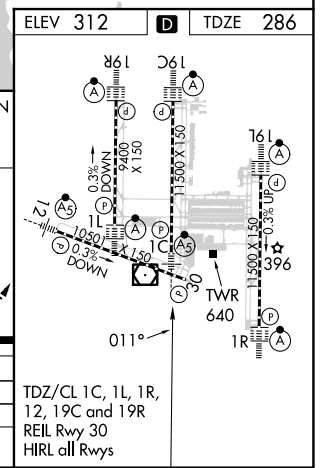
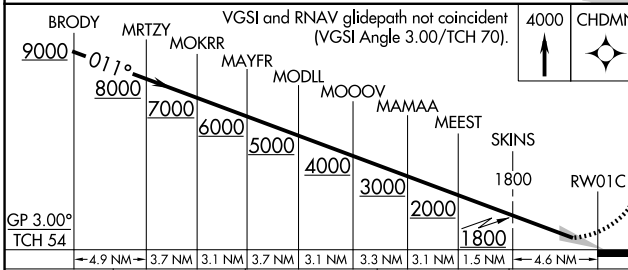
POTOMAC APP CON 120.45 306.925 (241°-330°) 128.525 306.925 (091°-240°) 126.1 338.25 (331°-090°)	DULLES TOWER 120.1 317.8 (Rwy 1R/19L) 120.25 348.6 (Rwy 1C/19C) 134.425 348.6 (Rwys 1L/19R and 12/30)	GND CON 121.9 317.8 (EAST) 121.625 348.6 (WEST)	CLNC DEL 135.7 317.8
---	---	---	--------------------------------

D-ATIS
134.85

CPDLC



ELEV 312	TDZE 286
----------	----------



CATEGORY	A	B	C	D
RNP 0.11 DA	540/24	254 (300-½)		
RNP 0.30 DA	730/45	444 (500-¾)		

AUTHORIZATION REQUIRED

TDZ/CL 1C, 1L, 1R, 12, 19C and 19R
REIL Rwy 30
HIRL all Rwys

NE-3, 17 APR 2025 to 15 MAY 2025

NE-3, 17 APR 2025 to 15 MAY 2025