

WAAS CH 40305 W19B	APP CRS 191°	Rwy ldg 11089 TDZE 272 Apt Elev 312
----------------------------------------	------------------------	----------------------------------------------------------------

RNAV (GPS) Y RWY 19C

WASHINGTON DULLES INTL (IAD)

RNP APCH - GPS.

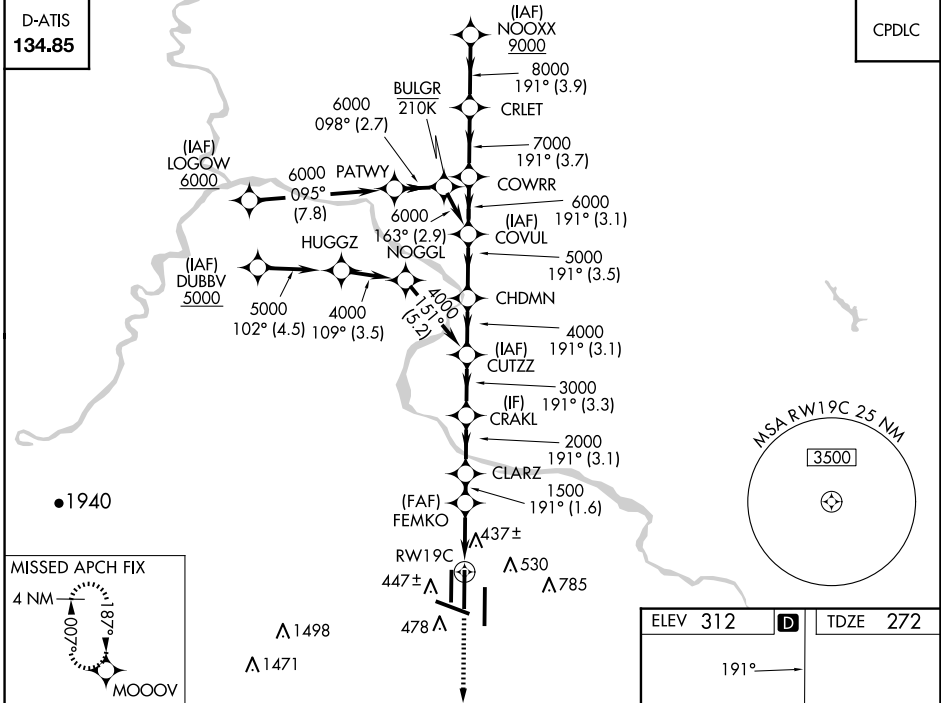
Simultaneous approach authorized. LNAV procedure NA during simultaneous operations.
Use of FD or AP required during simultaneous operations. For uncompensated Baro-VNAV systems, LNAV/VNAV NA below -13°C or above 54°C.

ALSIF-2



MISSED APPROACH:
Climb to 3000 direct
MOOOV and hold.

POTOMAC APP CON 120.45 306.925 (241°-330°) 128.525 306.925 (091°-240°) 126.1 338.25 (331°-090°)	DULLES TOWER 120.1 317.8 (Rwys 1R/19L) 120.25 348.6 (Rwys 1C/19C) 134.425 348.6 (Rwys 1L/19R and 12/30)	GND CON 121.9 317.8 (EAST) 121.625 348.6 (WEST)	CLNC DEL 135.7 317.8
-------------------------------------------------------------------------------------------------------------------------------	---------------------------------------------------------------------------------------------------------------------------------------	---------------------------------------------------------------------	--------------------------------



NE-3, 17 APR 2025 to 15 MAY 2025

NE-3, 17 APR 2025 to 15 MAY 2025

3000	MOOOV	VGSI and RNAV glidepath not coincident (VGSI Angle 3.00/TCH 72).				NOOXX
CATEGORY	A	B	C	D		
LPV DA	472/18		200 (200-1/2)			
LNAV/VNAV DA	700/40		428 (400-3/4)			
LNAV MDA	700/24 428 (400-1/2)		700/40 428 (400-3/4)			
CIRCLING	940-1 628 (700-1)		940-1 3/4 628 (700-1 3/4)		1180-2 3/4 868 (900-2 3/4)	

