

WAAS CH 58105 W19A	APP CRS 191°	Rwy ldg TDZE 302 Apt Elev 312	11500
--	------------------------	---	--------------

RNAV (GPS) Y RWY 19L

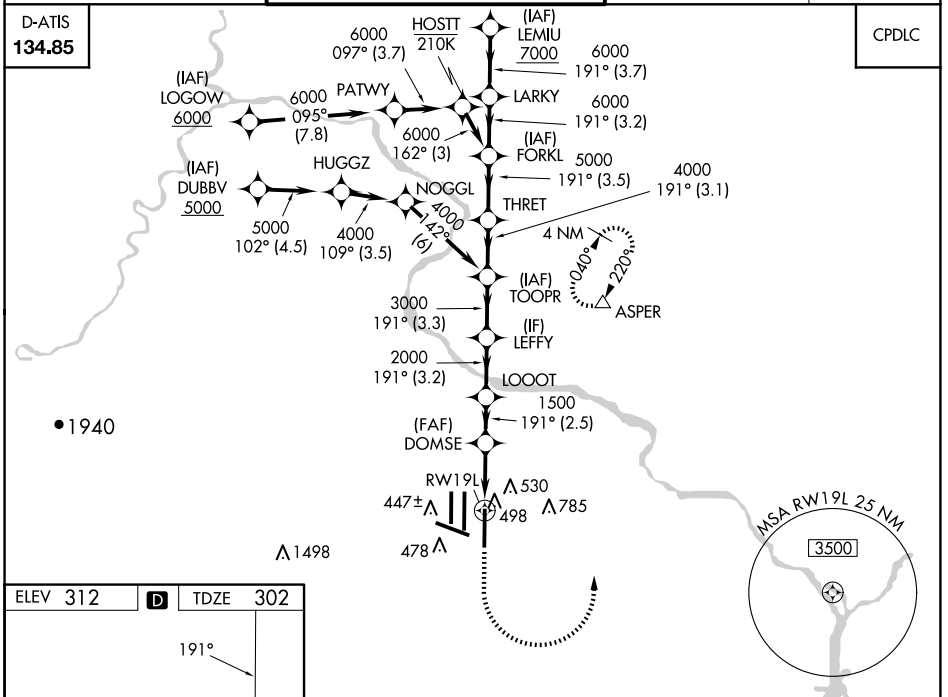
WASHINGTON DULLES INTL (IAD)

RNP APCH - GPS.	ALSF-2	MISSED APPROACH: Climb to 800 then climbing left turn to 3000 direct ASPER and hold.
<p>Simultaneous approach authorized. LNAV procedure NA during simultaneous operations.</p> <p>For uncompensated Baro-VNAV systems, procedure NA below -13°C or above 54°C.</p> <p>Use of FD or AP required during simultaneous operations.</p> <p>*RVR 1800 authorized with use of FD or AP or HUD to DA.</p>		

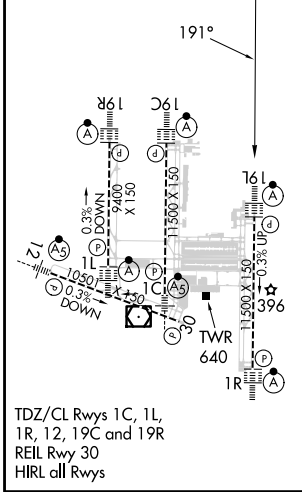
POTOMAC APP CON 120.45 306.925 (241°-330°) 128.525 306.925 (091°-240°) 126.1 338.25 (331°-090°)	DULLES TOWER 120.1 317.8 (Rwys 1R/19L) 120.25 348.6 (Rwy 1C/19C) 134.425 348.6 (Rwys 1L/19R and 12/30)	GND CON 121.9 317.8 (EAST) 121.625 348.6 (WEST)	CLNC DEL 135.7 317.8
---	--	---	--------------------------------

D-ATIS 134.85

CPDLC



ELEV 312	D	TDZE 302
----------	----------	----------



TDZ/CL Rwys 1C, 1L, 1R, 12, 19C and 19R
REIL Rwy 30
HIRL all Rwys

800	3000	ASPER	VGSi and RNAV glidepath not coincident (VGSi Angle 3.00/TCH 75).			
		DOMSE	THRET	FORKL	LARKY	LEMUI
		1.2 NM 1500	TOOPR	THRET	FORKL	LARKY
		2.4	LOOOT	LEFFY	TOOPR	THRET
		2.5	2000	3000	4000	5000
		3.2	3000	4000	5000	6000
		3.3	3000	4000	5000	6000
		3.1	3000	4000	5000	6000
		3.5	3000	4000	5000	6000
		3.2	3000	4000	5000	6000
		3.7	3000	4000	5000	6000
			GP 3.00°			
			TCH 55			

CATEGORY	A	B	C	D
LPV DA*	502/24 200 (200-½)			
LNAV/VNAV DA	760/45 458 (500-¾)			
LNAV MDA	760/24 458 (500-½)	760/45 458 (500-¾)		
CIRCLING	940-1 628 (700-1)	940-1¾ 628 (700-1¾)	1180-2¾ 868 (900-2¾)	

NE-3, 17 APR 2025 to 15 MAY 2025

NE-3, 17 APR 2025 to 15 MAY 2025