

WAAS CH 97509 W01B	APP CRS 011°	Rwy Ldg 11500 TDZE 286 Apt Elev 312
--	------------------------	--

RNAV (GPS) Y RWY 1C

WASHINGTON DULLES INTL (IAD)

RNP APCH - GPS.

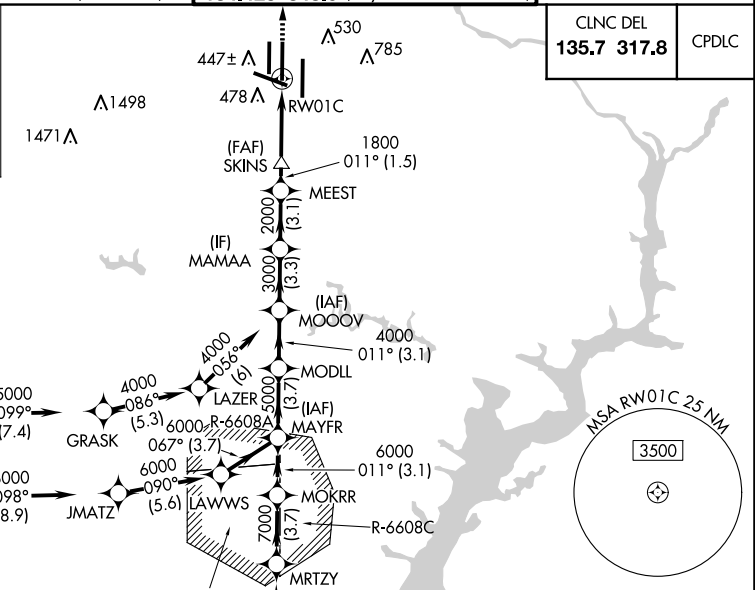
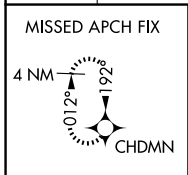
⚠ For uncompensated Baro-VNAV systems, LNAV/VNAV NA below -13°C or above 54°C.
⚠ Use of FD or AP required during simultaneous operations. LNAV procedure NA during simultaneous operations. Simultaneous approach authorized. For inop ALR, increase LNAV/VNAV all Cats visibility to 1½ SM. Increase LNAV Cat C/D visibility to 1¼ SM.

MALSR

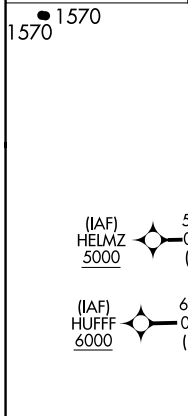


MISSILE APPROACH:
Climb to 4000 direct CHDMN and hold, continue climb-in-hold to 4000.

D-ATIS 134.85	POTOMAC APP CON 120.45 306.925 (241°-330°) 128.525 306.925 (091°-240°) 126.1 338.25 (331°-090°)	DULLES TOWER 120.1 317.8 (Rwy 1R/19L) 120.25 348.6 (Rwy 1C/19C) 134.425 348.6 (Rwys 1L/19R and 12/30)	GND CON 121.9 317.8 (EAST) 121.625 348.6 (WEST)
-------------------------	---	---	---



CLNC DEL 135.7 317.8	CPDLC
--------------------------------	-------

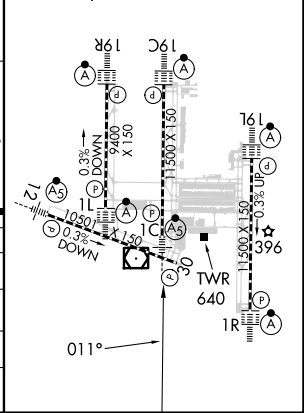


ELEV 312	D	TDZE 286
----------	----------	----------

TDZ/CL Rwys 1C, 1L, 1R, 12, 19C, and 19R
 REIL Rwy 30
 HIRL all Rwys

VGSI and RNAV glidepath not coincident (VGSI Angle 3.00/TCH 70).

	BRODY	MRTZY	MOKRR	MAYFR	MODLL	MOOOV	MAMAA	MEEST	SKINS	1.7 NM to RWY1C
GP 3.00°	9000	8000	7000	6000	5000	4000	3000	2000	1800	1800
TCH 54										
	4.9 NM	3.7 NM	3.1 NM	3.7 NM	3.1 NM	3.3 NM	3.1 NM	1.5 NM	2.9 NM	1.7 NM
CATEGORY	A			B			C		D	
LPV DA	486/18			200 (200-½)						
LNAV/VNAV DA	801/55			515 (500-1)						
LNAV MDA	900/24			614 (600-½)		900-1¾		614 (600-1¾)		
CIRCLING	940-1			628 (700-1)		940-1¾		1180-2¾		868 (900-2¾)



NE-3, 17 APR 2025 to 15 MAY 2025

NE-3, 17 APR 2025 to 15 MAY 2025