

WAAS CH <b>56409</b> W01A	APP CRS <b>011°</b>	Rwy ldg <b>11500</b> TDZE <b>312</b> Apt Elev <b>312</b>
---------------------------------	------------------------	--

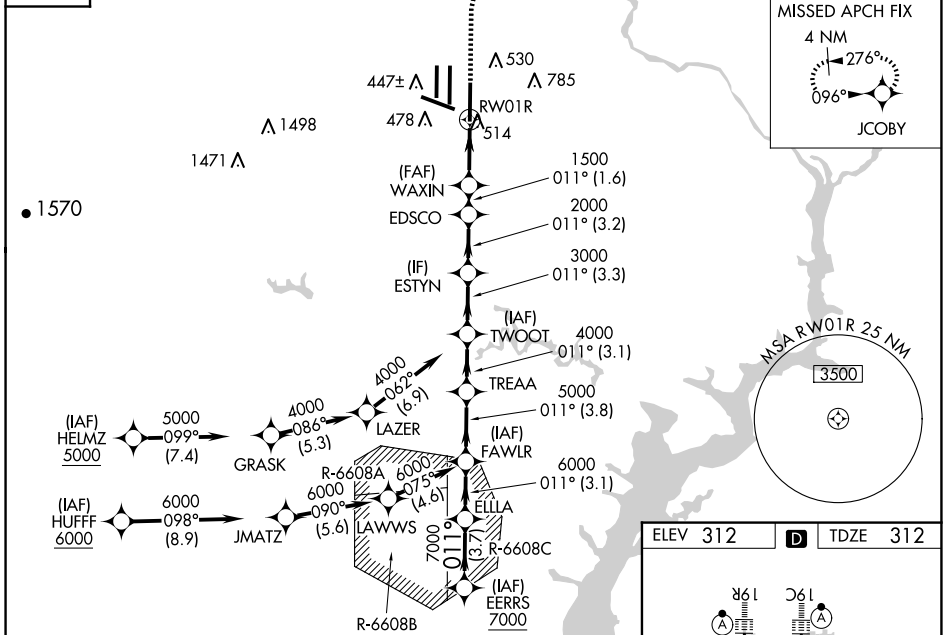
# RNAV (GPS) Y RWY 1R

WASHINGTON DULLES INTL (IAD)

RNP APCH - GPS.		ALSF-2	MISSED APPROACH: Climb to 780, then climbing right turn to 3000 direct JCOBY and hold.
<p>▼ For uncompensated Baro-VNAV systems, LNAV/VNAV NA below -13°C or above 54°C.          ▲ Simultaneous approach authorized. LNAV procedure NA during simultaneous operations.          Use of FD or AP required during simultaneous operations. For inop ALS, increase          LNAV/VNAV all Cats visibility to RVR 6000 and LNAV Cat C/D visibility to 1½ SM.</p>			

POTOMAC APP CON <b>120.45 306.925</b> (241°-330°) <b>128.525 306.925</b> (091°-240°) <b>126.1 338.25</b> (331°-090°)	DULLES TOWER <b>120.1 317.8</b> (Rwy 1R/19L) <b>120.25 348.6</b> (Rwy 1C/19C) <b>134.425 348.6</b> (Rwys 1L/19R and 12/30)	GND CON <b>121.9 317.8</b> (EAST) <b>121.625 348.6</b> (WEST)	CLNC DEL <b>135.7 317.8</b>
---	---	---	--------------------------------

D-ATIS <b>134.85</b>	CPDLC
-------------------------	-------



ELEV 312		D		TDZE 312	
<p>VGSI and RNAV glidepath not coincident (VGSI Angle 3.00/TCH 72).</p>					
EERRS		ELLA		JCOBY	
7000		6000		780	
011°		011°		011°	
7000		5000		3000	
6000		4000		1500	
3.1 NM		3.1 NM		1.2 NM	
3.8 NM		3.3 NM		2.3 NM	
3.1 NM		3.2 NM		1.6 NM	
3.3 NM		1.5 NM		1.2 NM	
3.2 NM		1.5 NM		1.2 NM	
1.6 NM		1.2 NM		1.2 NM	
3.7 NM		1.2 NM		1.2 NM	
A		B		C	
LPV DA		512/18		200 (200-½)	
LNAV/VNAV DA		728/40		416 (500-¾)	
LNAV MDA		780/24		468 (500-½)	
780/50		468 (500-1)			
CIRCLING		940-1		628 (700-1)	
940-1¾		628 (700-1¾)		868 (900-2¾)	
1180-2¾		868 (900-2¾)			
<p>TDZ/CL Rwys 1C, 1L, 1R, 12, 19C and 19R          REIL Rwy 30          HIRL all Rwys</p>					

NE-3, 17 APR 2025 to 15 MAY 2025

NE-3, 17 APR 2025 to 15 MAY 2025