

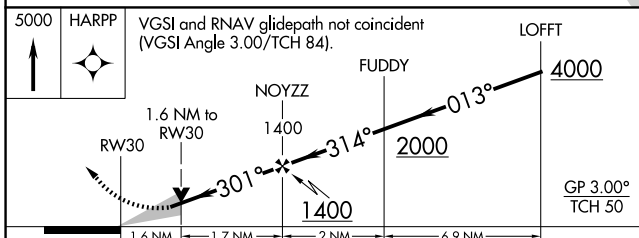
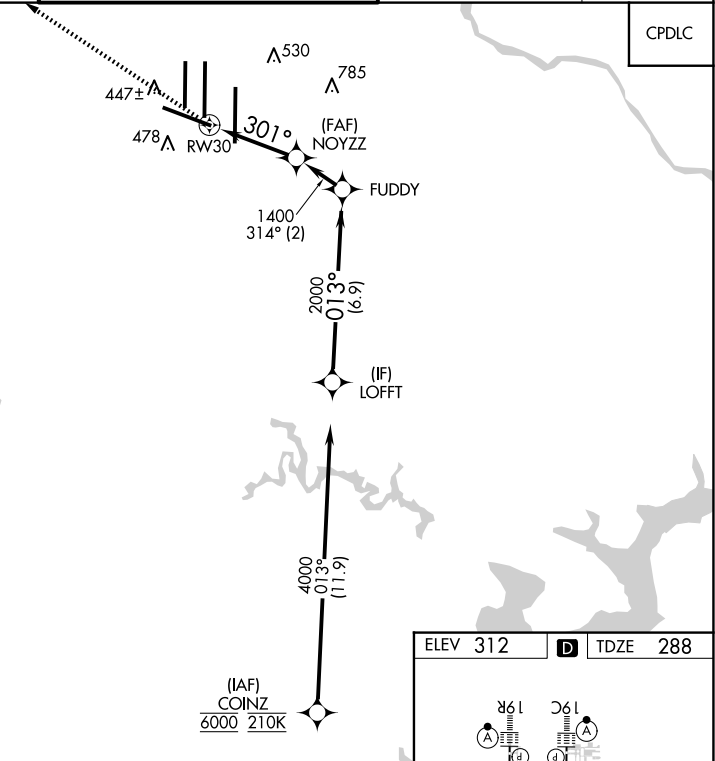
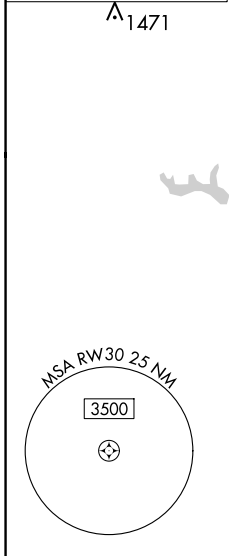
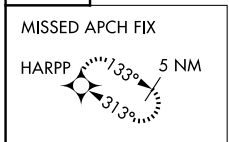
| | | |
|-------------|----------|--------------|
| APP CRS | Rwy Idg | 10501 |
| 301° | TDZE | 288 |
| | Apt Elev | 312 |

RNAV (GPS) Y RWY 30

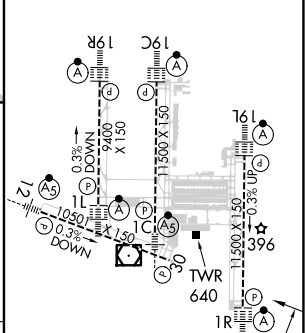
WASHINGTON DULLES INTL (IAD)

| | | | |
|---|--|---|--|
| RNP APCH - GPS. | | MISSED APPROACH: Climb to 5000 direct HARPP and hold. | |
| <p>▼ For uncompensated Baro-VNAV systems, LNAV/VNAV NA below -13°C or above 54°C.</p> | | | |
| POTOMAC APP CON | | DULLES TOWER | |
| 120.45 306.925 (241°-330°) | | 120.1 317.8 (Rwy 1R/19L) | |
| 128.525 306.925 (091°-240°) | | 120.25 348.6 (Rwy 1C/19C) | |
| 126.1 338.25 (331°-090°) | | 134.425 348.6 (Rwys 1L/19R and 12/30) | |
| | | GND CON | |
| | | 121.9 317.8 (EAST) | |
| | | 121.625 348.6 (WEST) | |
| | | CLNC DEL | |
| | | 135.7 317.8 | |

| | |
|---------------|-------|
| D-ATIS | CPDLC |
| 134.85 | |



| | | |
|----------|----------|----------|
| ELEV 312 | D | TDZE 288 |
|----------|----------|----------|



| | | | | |
|--------------|-----------------------------------|-------------|--|--|
| CATEGORY | A | B | C | D |
| LNAV/VNAV DA | 801-1 ³ / ₈ | | 513 (500-1 ³ / ₈) | |
| LNAV MDA | 900/55 | 612 (600-1) | 900-1 ³ / ₄ | 612 (600-1 ³ / ₄) |
| CIRCLING | 940-1 | 628 (700-1) | 940-1 ³ / ₄ | 1180-2 ³ / ₄ |
| | | | 628 (700-1 ³ / ₄) | 868 (900-2 ³ / ₄) |

TDZ/CL 1C, 1L, 1R, 12, 19C and 19R
REIL Rwy 30
HIRL all Rwys

NE-3, 17 APR 2025 to 15 MAY 2025

NE-3, 17 APR 2025 to 15 MAY 2025