

(ADELL7.ADELL) 24305

AL-5104 (FAA)

DUPAGE (DPA)

ADELL SEVEN DEPARTURE (RNAV)

CHICAGO/WEST CHICAGO, ILLINOIS

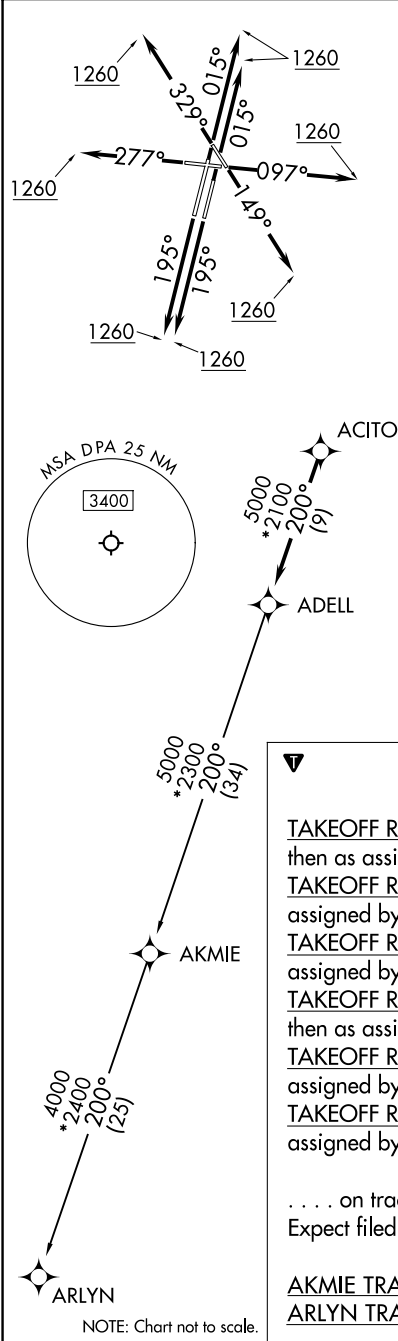
RNAV 1 - DME/DME/IRU or GPS.  
RADAR required. RADAR required for  
non-GPS equipped aircraft.

CHICAGO DEP CON  
133.5 349.0  
ATIS  
132.075  
GND CON  
121.8  
DUPAGE TOWER  
120.9 257.8

TOP ALTITUDE:  
3000

TAKEOFF MINIMUMS:  
Rwys 2L/R, 10, 20L/R, 28, 33: Standard.  
Rwy 15: 300-1 or standard with minimum  
climb of 205' per NM to 1000.

NOTE: Turbojet departures maintain 250K  
until advised by ATC.  
NOTE: AKMIE Transition: For aircraft inbound  
to BMI, SPI, PIA, or as assigned by ATC.



DEPARTURE ROUTE DESCRIPTION

TAKEOFF RUNWAYS 2L/R: Climb on heading 015° to 1260, then as assigned by ATC, for vectors to ACITO, thence . . .  
TAKEOFF RUNWAY 10: Climb on heading 097° to 1260, then as assigned by ATC, for vectors to ACITO, thence . . .  
TAKEOFF RUNWAY 15: Climb on heading 149° to 1260, then as assigned by ATC, for vectors to ACITO, thence . . .  
TAKEOFF RUNWAYS 20L/R: Climb on heading 195° to 1260, then as assigned by ATC, for vectors to ACITO, thence . . .  
TAKEOFF RUNWAY 28: Climb on heading 277° to 1260, then as assigned by ATC, for vectors to ACITO, thence . . .  
TAKEOFF RUNWAY 33: Climb on heading 329° to 1260, then as assigned by ATC, for vectors to ACITO, thence . . .

. . . . on track 200° to ADELL, then on (transition). Maintain 3000. Expect filed altitude 10 minutes after departure.

AKMIE TRANSITION (ADELL7.AKMIE):  
ARLYN TRANSITION (ADELL7.ARLYN):

ADELL SEVEN DEPARTURE (RNAV)  
(ADELL7.ADELL) 31OCT24

CHICAGO/WEST CHICAGO, ILLINOIS  
DUPAGE (DPA)

EC-3, 17 APR 2025 to 15 MAY 2025

EC-3, 17 APR 2025 to 15 MAY 2025